

VERSA STEEL

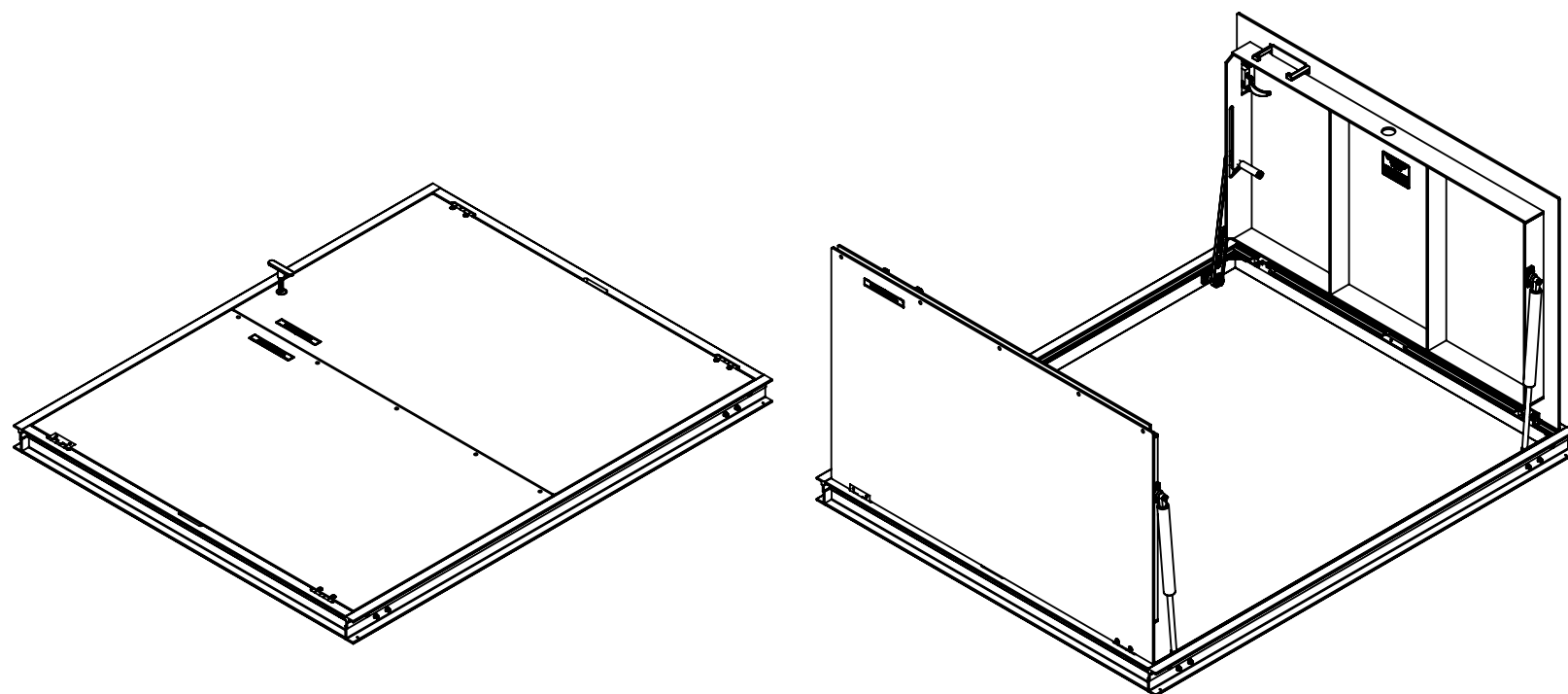
SPECIFICATION

HATCH ASSEMBLY FLUSH, 48 X 60 PEDESTRIAN

Assembly No.:VSH-300-A-48-60-D-GS

ASSEMBLY NO./PART NUMBER KEY:

VSH= VERSA STEEL INC. HATCH
300 = SIDEWALK, STREET, FLUSH, 300 P.S.F RATED,
A= ALUMINUM CONSTRUCTION
48-60= SIZE INTERIOR OPENING
D = DUAL LEAF, SLAM LATCH
GS= GAS SPRING ASSIST



GENERAL SPECIFICATIONS:

1. MATERIAL IS 6061-T6 ALUMINUM FOR BARS, AND EXTRUSIONS. 1/4" 6061 TREAD PLATE
2. UNIT IS DESIGNED FOR 300 P.S.F LOADS.
3. UNIT IS DESIGNED TO BE CAST INTO CONCRETE FLOOR OR CURBING. CONCRETE MUST SUPPORT THE 300 RATING FOR PROPER INSTALLATION OF HATCH.
4. FRAME IS CONTINUOUS EXTRUDED CHANNEL 1-5/8" WIDE WITH LEGS TO LOCK INTO CONCRETE FOR THE COMPLETE PERIMETER OF FRAME. EACH CORNER HAS A CORNER RE-ENFORCEMENT CLIP BOLTED IN PLACE.
5. HINGES ARE HEAVY DUTY DESIGN, MATERIAL IS 316 STAINLESS STEEL.
6. ALL FASTENERS ARE GRADE 316 STAINLESS STEEL, NUTS ARE SELF LOCKING NYLON INSERT TYPE.
7. ALL ALUMINUM IS MILL FINISH WITH THE EXTERIOR OF FRAME THAT CONTACT CONCRETE HAS A COAT OF BLACK BITUMINOUS PAINT.
8. LID IS SUPPLIED WITH A STAINLESS STEEL SLAM LOCK WITH A THREADED O-RING CLOSURE AND A TEE HANDLE TO REMOVE CLOSURE AND OPERATE THE SLAM LOCK. SLAM LOCK HAS INTERNAL HANDLE FOR ACCESS INTERNALLY.
9. A STAINLESS STEEL LIFT HANDLE IS SUPPLIED AND IS FLUSH WITH TOP OF LID WHEN NOT IN USE.
10. LID IS HELD OPEN IN A 90 DEGREE POSITION WITH A LOCK OPEN ARM, MANUALLY RELEASED TO CLOSE HATCH.
11. GAS SPRING ASSIST ON EACH DOOR MADE FROM 316 STAINLESS AND FILLED WITH FOOD GRADE OIL.

THIS DOCUMENT CONTAINS PROPRIETARY, TRADE SECRET INFORMATION THAT IS THE PROPERTY OF VERSA STEEL, INC. THE INFORMATION CONTAINED IN THIS DOCUMENT, INCLUDING THE PRINCIPLE OF DESIGN, MAY NOT BE USED OR COPIED, IN WHOLE OR IN PART, WITHOUT THE EXPRESS PRIOR WRITTEN CONSENT OF VERSA STEEL, INC.

VERSA STEEL, INC.
1618 NE FIRST AVENUE
PORTLAND, OREGON 97232
(503)287-9822
FAX (503)-287-7483

DRAWN BY
E.BAILIFF

DATE
2010-9-25
CHECKED BY

APPROVED BY

MATERIAL

FINISH

SHEET TITLE

HATCH ASSEMBLY FLUSH, 48 X 60

PART NUMBER: VSH-300-A-48-60-D-GS

PART NUMBER
VSH-300-A-48-60-D-GS
SUPPLIER

SCALE
1:20

DRAWING NO.

VSH-300-A-48-60-D-GS-APP

REVISION NO.

A

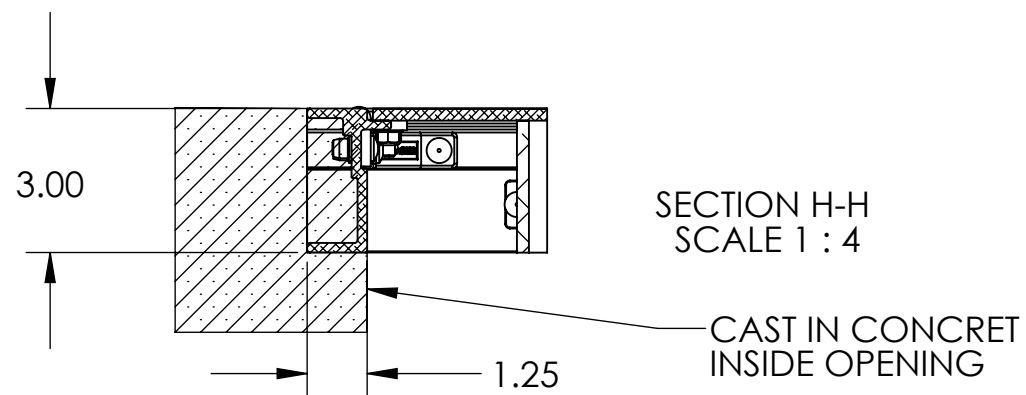
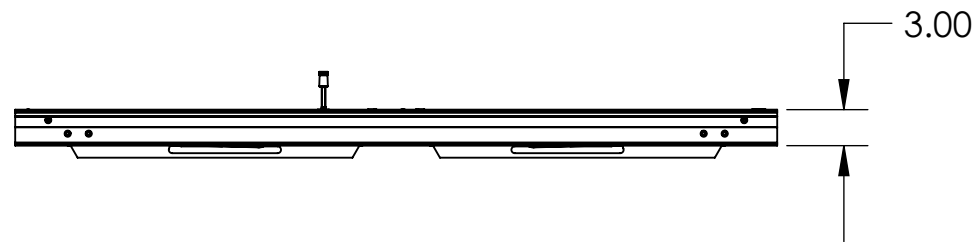
SHEET NO.
1 OF 2

G F E D C B A
REV

ISSUED FOR

DATE

BY



THIS DOCUMENT CONTAINS PROPRIETARY, TRADE SECRET INFORMATION THAT IS THE PROPERTY OF VERSA STEEL, INC. THE INFORMATION CONTAINED IN THIS DOCUMENT, INCLUDING THE PRINCIPLE OF DESIGN, MAY NOT BE USED OR COPIED, IN WHOLE OR IN PART, WITHOUT THE EXPRESS PRIOR WRITTEN CONSENT OF VERSA STEEL, INC.

SCALE	
1:16	
DRAWING NO.	
VSH-300-A-48-60-D-GS-APP	
REVISION NO.	
A	
SHEET NO.	
2 OF 2	

REV	ISSUED FOR	DATE	BY
A			
B			
C			
D			
E			
F			
G			