

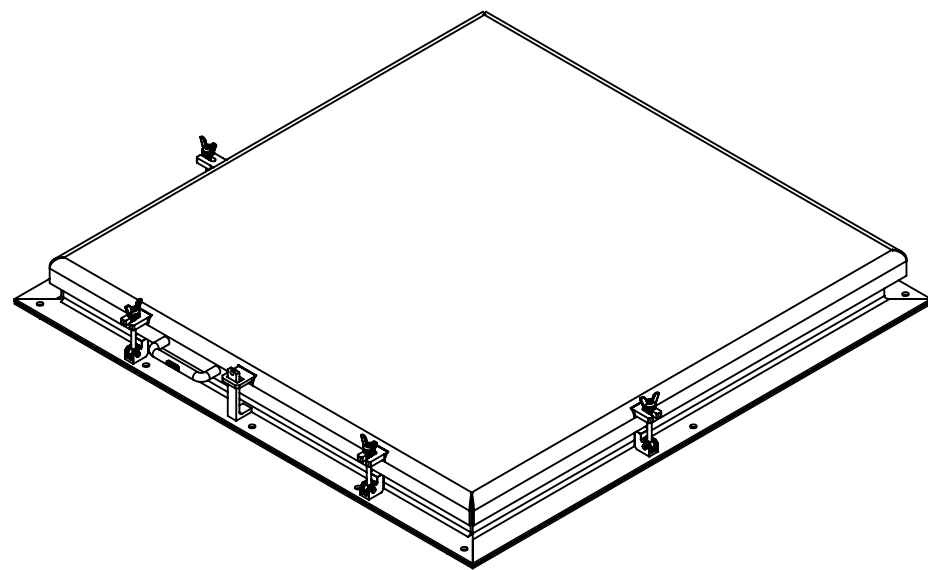
# VERSA STEEL Approval Drawings

HATCH ASSEMBLY, SL SERIES 48 X 48

Assembly No.:VSH-150-A-48-48-SL-GS

ASSEMBLY NO./PART NUMBER KEY:

VSH= VERSA STEEL INC. HATCH  
 150 = 150 P.S.F. RATED  
 A= ALUMINUM CONSTRUCTION  
 48-48= SIZE INTERIOR OPENING  
 SL = LARGE SERIES (THREE HINGES)  
 GS= GAS SPRING



GENERAL SPECIFICATIONS:

1. UNIT IS WEATHER PROOF WITH CONTINUOUS BULB SEAL ON LID TO FRAME AND 1/4" X 3" WIDE FRAME TO CURB SEALS.
2. LID OVER LAPS FRAME A MINIMUM OF 2 INCHES.
3. FRAME IS A MINIMUM OF 4" ABOVE THE CURB.
4. LID IS HINGED ON SIDE WITH TAMPER PROOF SCREWS . THERE ARE A MINIMUM OF FOUR SWING BOLT HOLD DOWNS TO SECURE THE HATCH FOR WEATHER PROOF SEAL.
5. HATCH IS DESIGNED FOR 150 P.S.F. LOAD.
6. THERE ARE 8 EXTERIOR ATTACHMENT POINTS FOR 1/2" FASTENER. THERE IS A FULL FACE GASKET OF 3" WIDE CLOSED CELL FOAM EPDM BETWEEN FRAME AND CURB.
7. LID IS A 1/4" 5086 FORMED ALUMINUM PLATE.
8. ALL FASTENERS AND HARDWARE ARE 316 STAINLESS STEEL

THIS DOCUMENT CONTAINS PROPRIETARY, TRADE SECRET, INFORMATION THAT IS THE PROPERTY OF VERSA STEEL, INC. THE INFORMATION CONTAINED IN THIS DOCUMENT, INCLUDING THE PRINCIPLE OF DESIGN, MAY NOT BE USED OR COPIED, IN WHOLE OR IN PART, WITHOUT THE EXPRESS PRIOR WRITTEN CONSENT OF VERSA STEEL, INC.

REV	A	B	C	D	E	F	G
ISSUED FOR							
DATE							
BY							

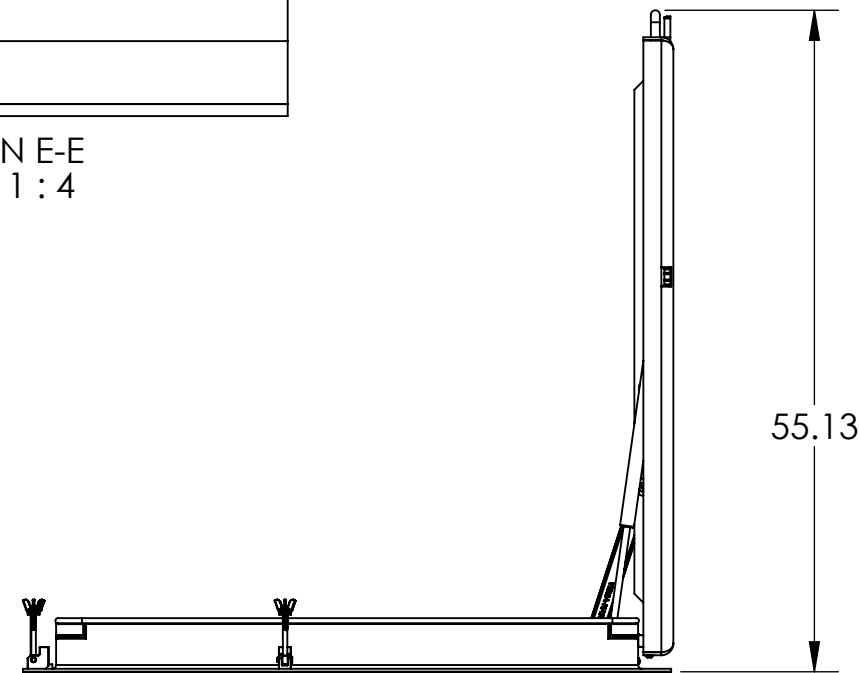
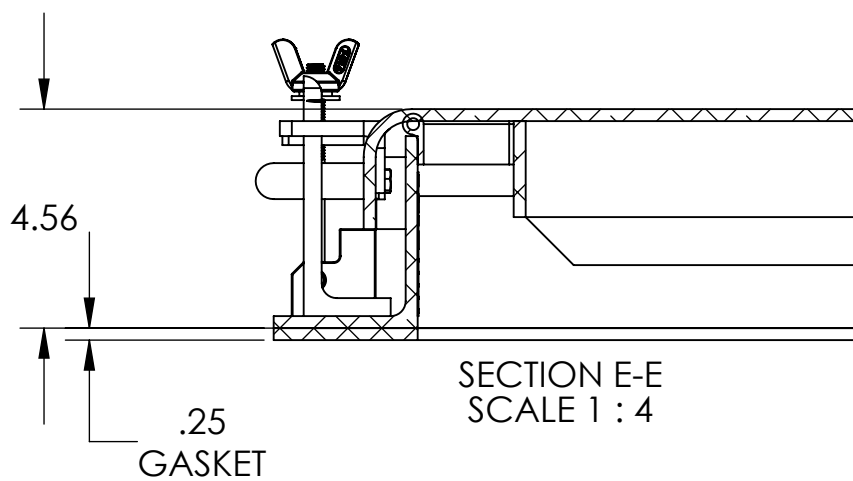
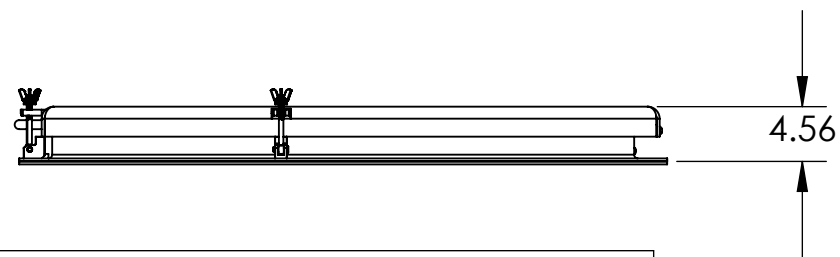
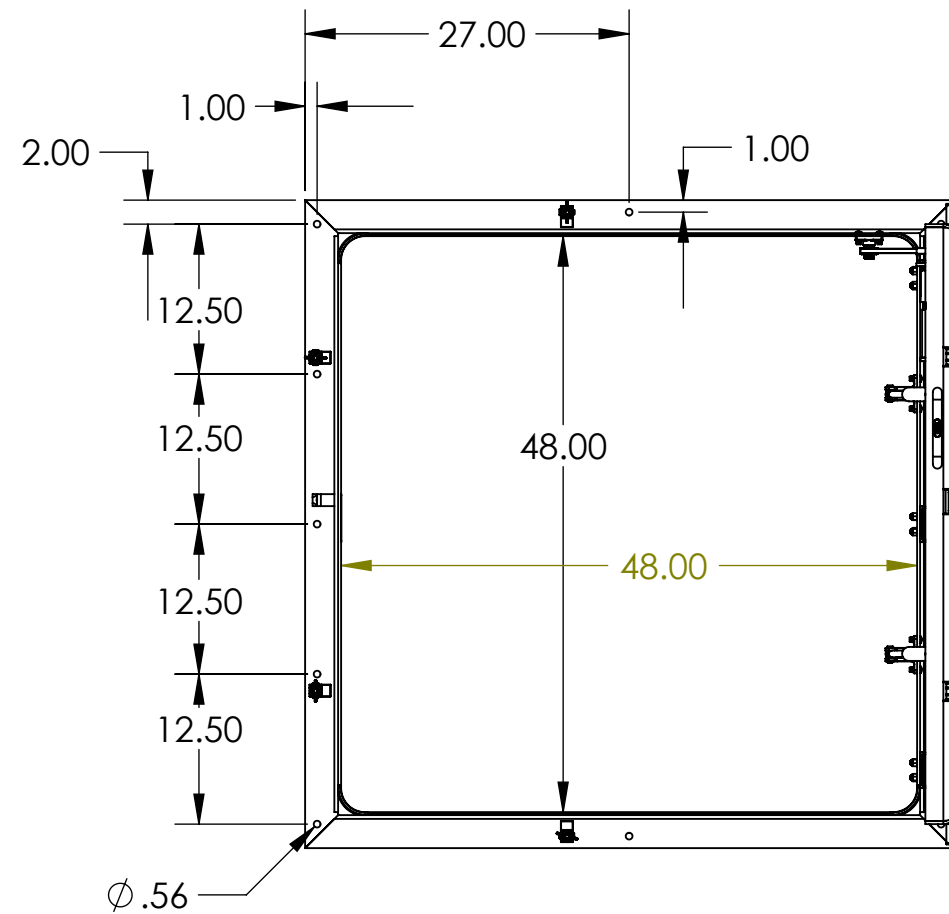
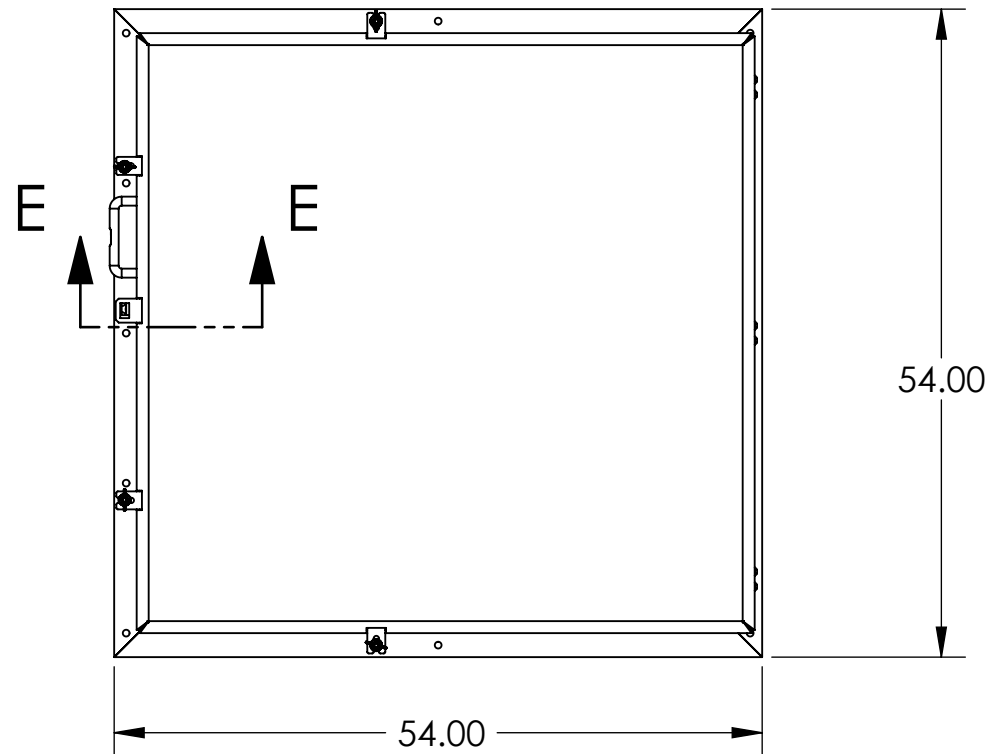
VERSA STEEL, INC.  
 1618 NE FIRST AVENUE  
 PORTLAND, OREGON 97232  
 (503)287-9822  
 FAX (503)-287-7483

DRAWN BY  
 E.BAILIFF  
 DATE  
 2010-10-18  
 CHECKED BY

APPROVED BY

MATERIAL  
 6061-T6 ALUMINUM  
 FINISH  
 BARE  
 SHEET TITLE  
 HATCH ASSEMBLY, SL SERIES 48 X 48  
 PART NUMBER: VSH-150-A-48-48-SL-GS

PART NUMBER  
 VSH-150-A-48-48-SL-GS  
 SUPPLIER  
 FABRICATED PART  
 SCALE  
 1:16  
 DRAWING NO.  
 VSH-150-A-48-48-SL-GS-APP  
 REVISION NO.  
 C  
 SHEET NO.  
 1 OF 3



NOTES:  
 PN: VSH-150-A-48-48-SL-GS  
 DESC: HATCH ASSEMBLY, SL SERIES 48 X 48  
 MATRL: 6061-T6 ALUMINUM  
 EST. WT: 141.5  
 FINISH: BARE  
 NOTE: -  
 CAD FILE: VSH-150-A-48-48-SL-GS-APPROVAL

THIS DOCUMENT CONTAINS PROPRIETARY, TRADE SECRET INFORMATION THAT IS THE PROPERTY OF VERSA STEEL, INC. THE INFORMATION CONTAINED IN THIS DOCUMENT, INCLUDING THE PRINCIPLE OF DESIGN, MAY NOT BE USED OR COPIED, IN WHOLE OR IN PART, WITHOUT THE EXPRESS PRIOR WRITTEN CONSENT OF VERSA STEEL, INC.

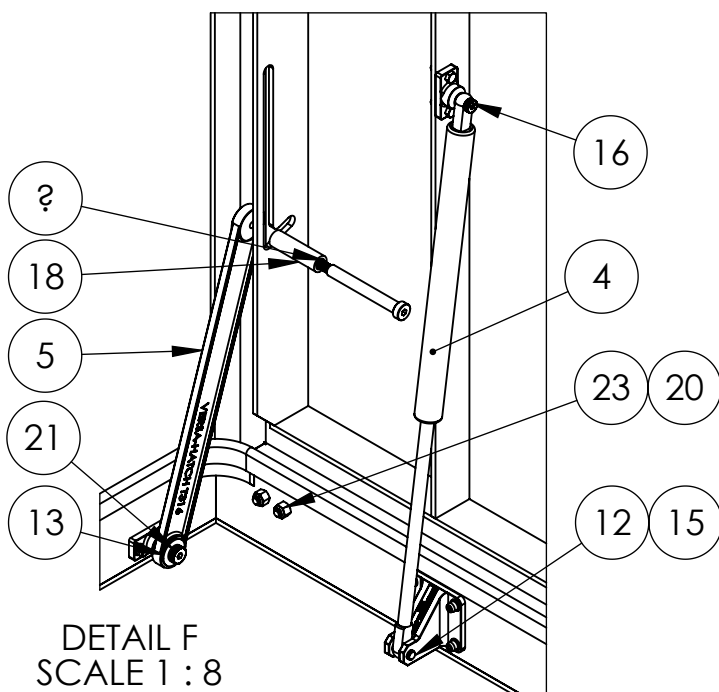
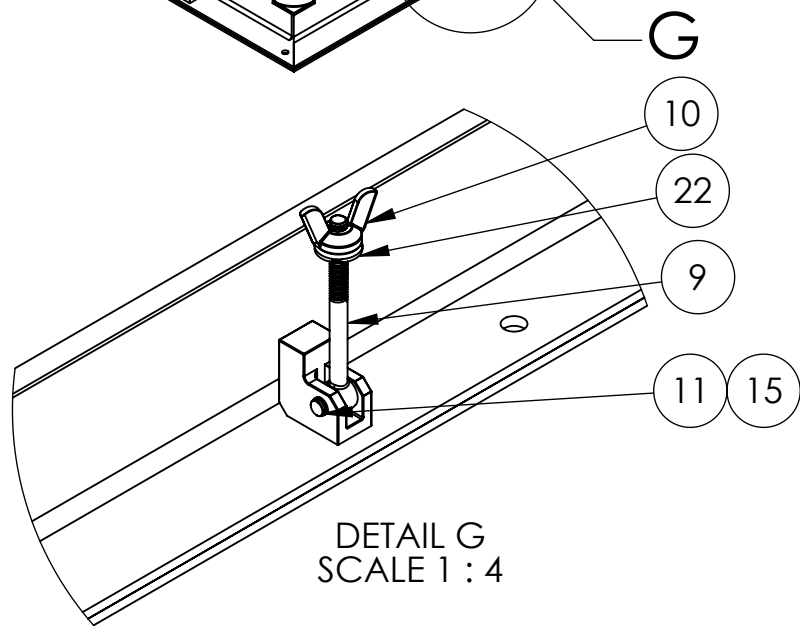
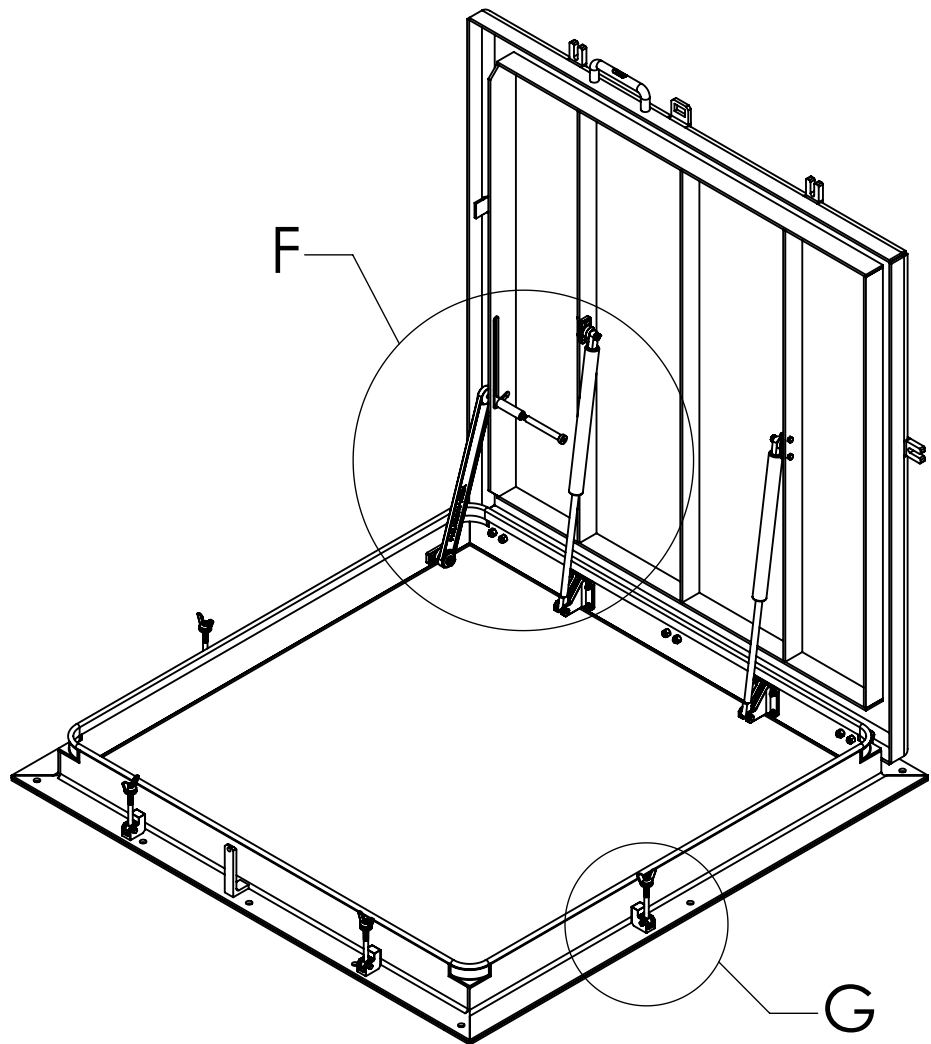
VERSA STEEL, INC.  
 1618 NE FIRST AVENUE  
 PORTLAND, OREGON 97232  
 (503)287-9822  
 FAX (503)-287-7483

DRAWN BY  
 E. BAILIFF  
 DATE  
 2010-10-18  
 CHECKED BY

APPROVED BY

MATERIAL	6061-T6 ALUMINUM
FINISH	BARE
SHEET TITLE	HATCH ASSEMBLY, SL SERIES 48 X 48
PART NUMBER	VSH-150-A-48-48-SL-GS
SUPPLIER	FABRICATED PART
SCALE	1:16
DRAWING NO.	VSH-150-A-48-48-SL-GS-APP
REVISION NO.	C
SHEET NO.	2 OF 3

REV	ISSUED FOR	DATE	BY
G			
F			
E			
D			
C			
B			
A			



ITEM NO.	PART NUMBER	DESCRIPTION	QTY
1	7000451-48X48	FRAME 150 SERIES LONG 48 X 48	1
2	7000452-48X48	LID WELDMENT 48 X 48	1
3	1000525-48X48	HATCH SEAL, 48 X 48	1
4	1165-10-325	STAINLESS STEEL GAS SPRINGS, 10" STROKE, 325 LBS	2
5	1000524-24	3/4" HOLD OPEN ARM, 24, 316 SST	1
6	1000527-48	SEAL, BASE WIDTH 48	2
7	1000526-48	SEAL, BASE SIDE 48	2
8	GFI-0809-08	FLANGED BEARING	1
9	1000059	ROD END 3/8" ID X 3/4" OD X 4 1/2" LG W/ 3/8-16 THRD X 2" LG	4
10	1000061	WING NUT, 3/8-16 UNC	4
11	1000664	Clevis Pin 3/8x1	4
12	1000756	Clevis Pin 3/8x1-1/4	2
13	1000844-08	WASHER, 1/2" ID X .06", NYLON	1
14	1000740	DATA PLATE	1
15	VS-37	.375 Dia External, single turn, retaining ring-T316	6
16	1000657	Shoulder Bolt 3/8x 1/2	2
21	1000656	Shoulder Bolt 1/2x5/8	1
18	9446K71	LOCK BAR COVERING, GP PVC TUBING, RED	1
19	7000543	PINTLE HINGE ASSEMBLY-T316	3
20	1001739-16	Pin-Allen Button Head, -3/8-16 X 1, 316	12
21	1000793-06	SRING LOCK WASHER, 3/8", 316	4
22	1000792-06	WASHER, 3/8" 316, WIDE	4
23	1000796-06	HEX NUT, NYLON LOCKING, 3/8-16, 316	12
24	1000060	SH SHOULDER SCREW, 3/8"-16 X 1/2" X 4.0 LG 316	1

NOTES:  
 PN: VSH-150-A-48-48-SL-GS  
 DESC: HATCH ASSEMBLY, SL SERIES 48 X 48  
 MATRL: 6061-T6 ALUMINUM  
 EST. WT: 141.5  
 FINISH: BARE  
 NOTE: -  
 CAD FILE: VSH-150-A-48-48-SL-GS-APPROVAL

**TOLERANCES:**

DIMENSIONS ARE IN INCHES  
 TOLERANCES:  
 X.XX ± 0.020"  
 X.XXX ± 0.005"  
 UNLESS NOTED

THIS DOCUMENT CONTAINS PROPRIETARY, TRADE SECRET INFORMATION THAT IS THE PROPERTY OF VERSA STEEL, INC. THE INFORMATION CONTAINED IN THIS DOCUMENT, INCLUDING THE PRINCIPLE OF DESIGN, MAY NOT BE USED OR COPIED, IN WHOLE OR IN PART, WITHOUT THE EXPRESS PRIOR WRITTEN CONSENT OF VERSA STEEL, INC.

VERSAS STEEL, INC.  
 1618 NE FIRST AVENUE  
 PORTLAND, OREGON 97232  
 (503)287-9822  
 FAX (503)-287-7483

DRAWN BY  
 E. BAILIFF  
 DATE  
 2010-10-18  
 CHECKED BY

APPROVED BY

MATERIAL  
 6061-T6 ALUMINUM  
 FINISH  
 BARE  
 SHEET TITLE  
 HATCH ASSEMBLY, SL SERIES 48 X 48  
 PART NUMBER: VSH-150-A-48-48-SL-GS

PART NUMBER  
 VSH-150-A-48-48-SL-GS  
 SUPPLIER  
 FABRICATED PART  
 SCALE  
 1:16  
 DRAWING NO.  
 VSH-150-A-48-48-SL-GS-APP  
 REVISION NO.  
 C  
 SHEET NO.  
 3 OF 3

REV  
 A  
 B  
 C  
 D  
 E  
 F  
 G  
 DATE  
 BY