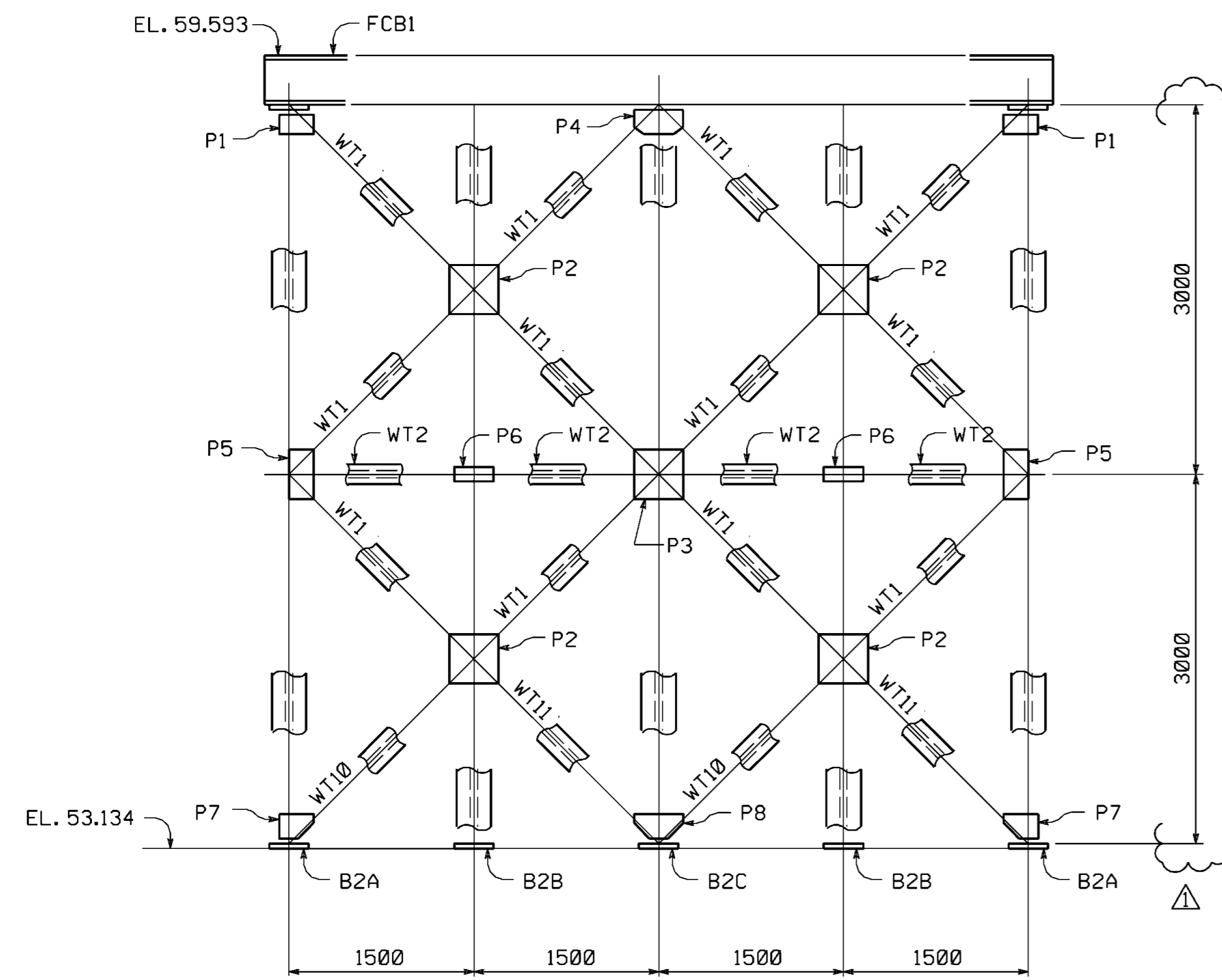


METRIC

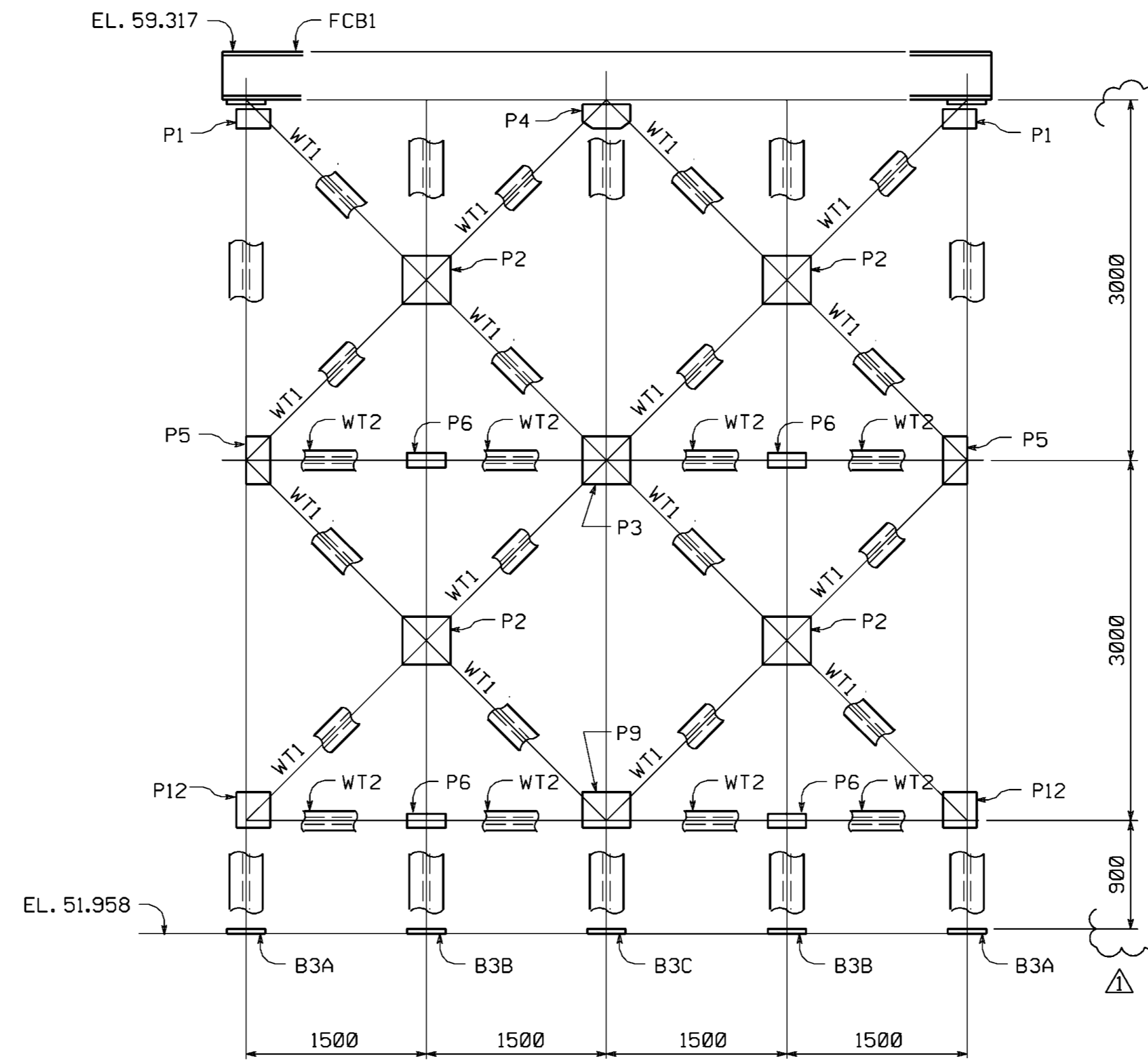
METRIC

1. ALL DIMENSIONS ARE IN MILLIMETERS UNLESS OTHERWISE NOTED.
2. ALL WEIGHTS ARE IN KILOGRAMS.

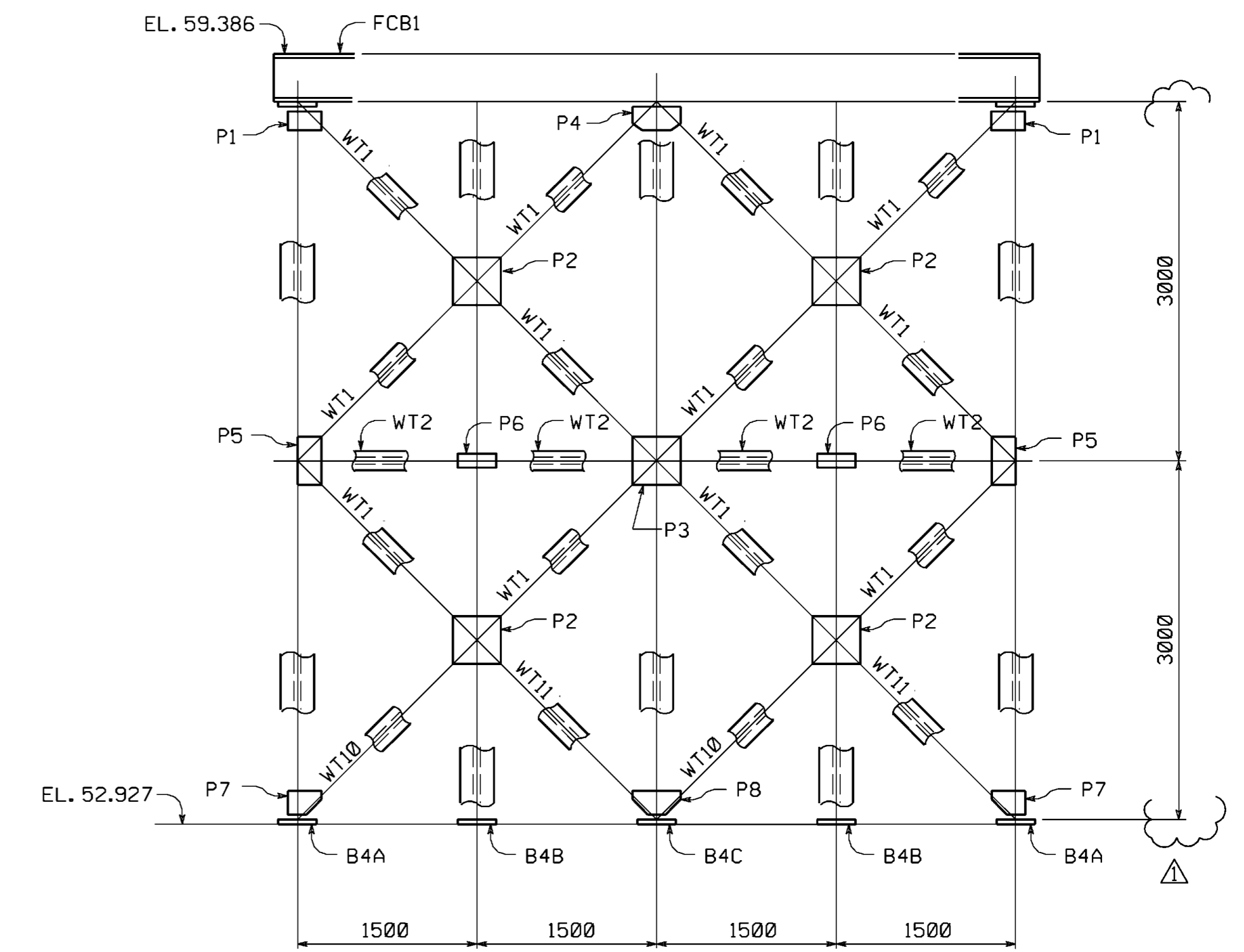
| | | |
|--------------------|-------|--------------------|
| FED. ROAD DIV. NO. | STATE | FED. AID PROJ. NO. |
| 3 | PA | |



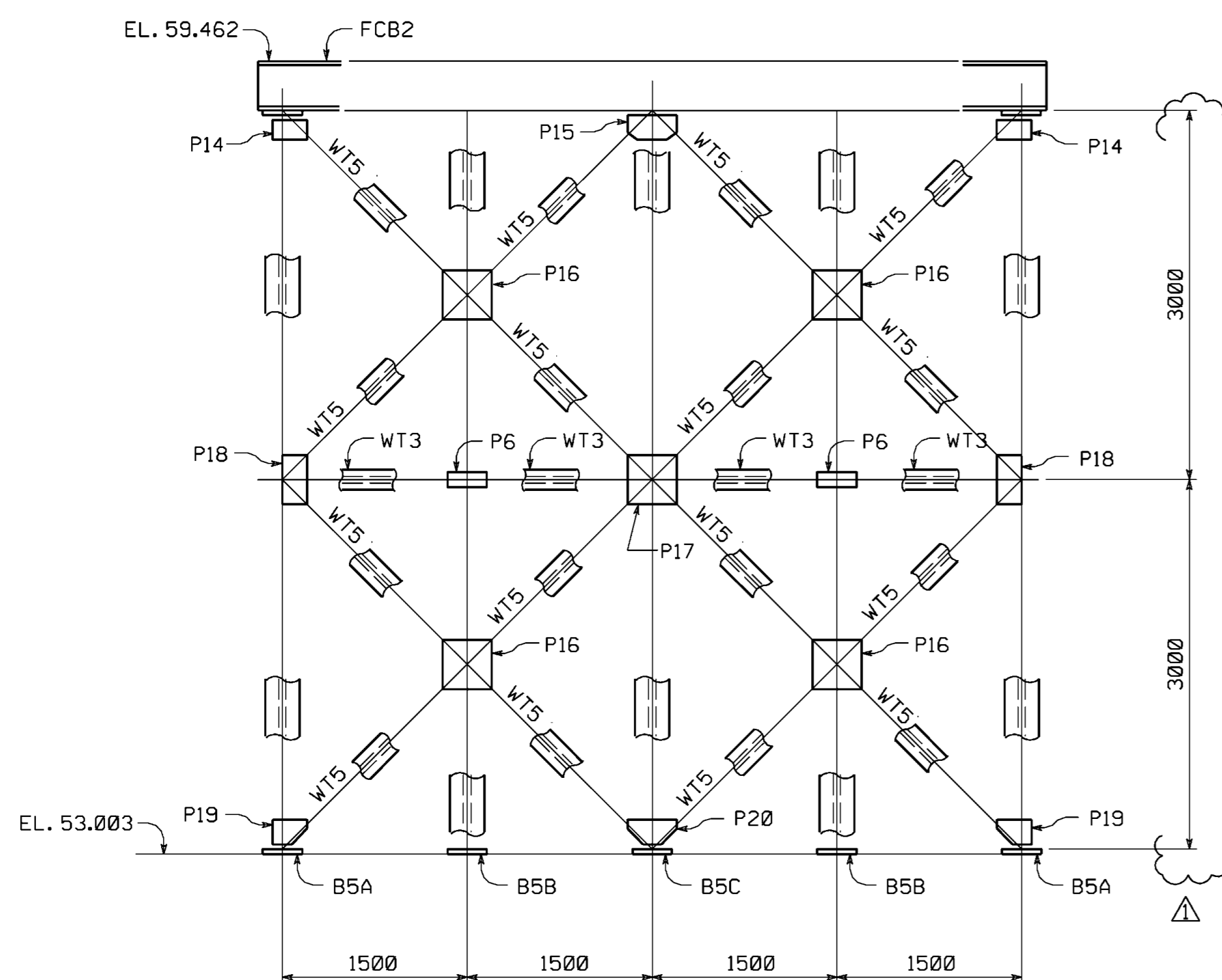
BENT 2



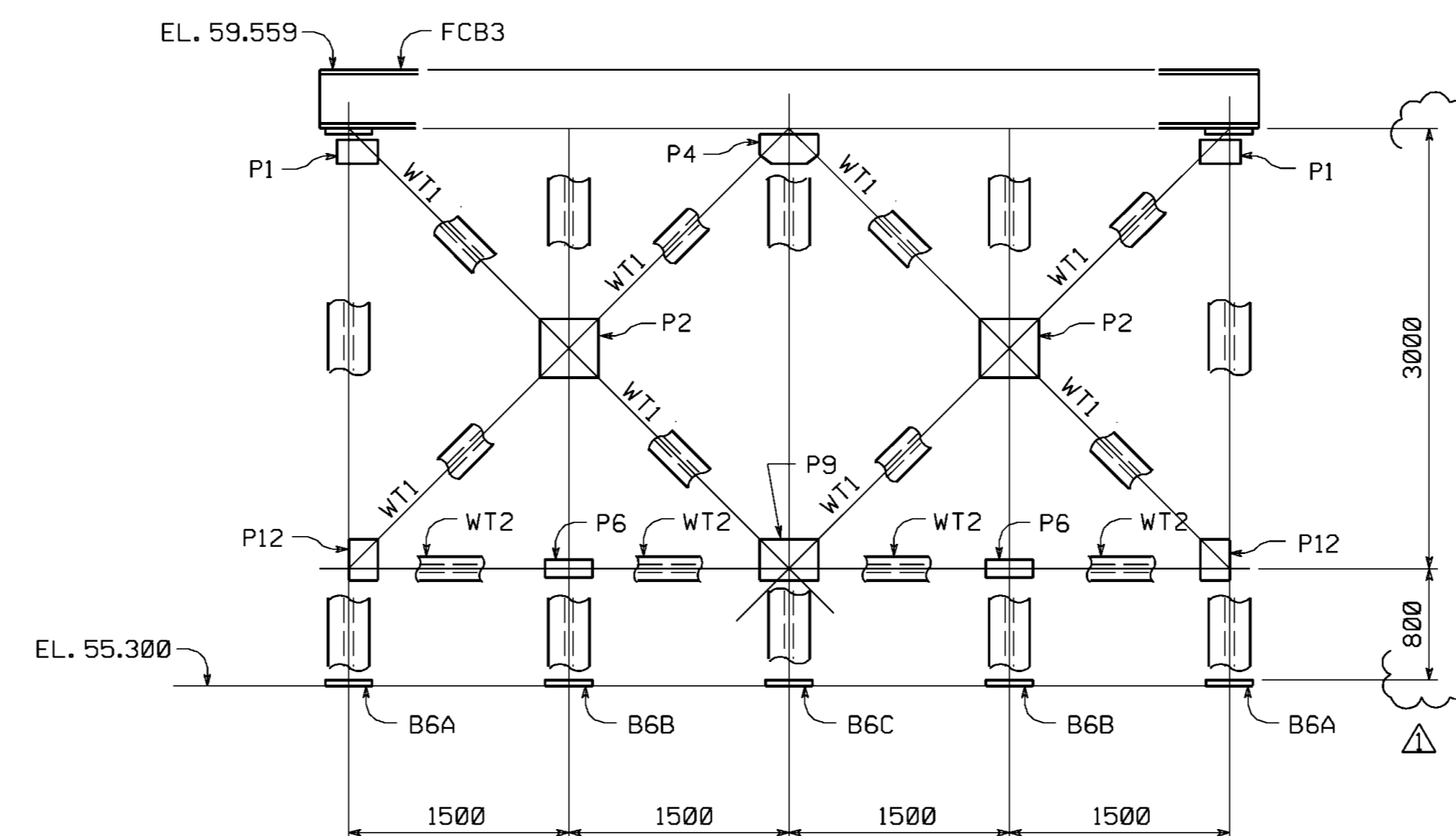
BENT 3



BENT 4



BENT 5



BENT 6

ERECTOR NOTE:
SHIPPING PIECE MARKS ARE ALIKE
ON BOTH FACES OF ALL BENTS.
PIECES PREFIXED B RUN FULL WIDTH OF BENT.

WORK THIS DWG. WITH DWG. E103
FOR FIELD BOLT SUMMARY SEE DWG. E103
FOR NOTES SEE DWG. E103

| | | | |
|-----|-----------------------------------|----|---------|
| △ | | | |
| △ | | | |
| △ | ADDED VERTICAL PANEL DIMENSIONS ~ | RS | 1/24/05 |
| NO. | REVISION | BY | DATE |

HIGH STEEL STRUCTURES, INC.
1770 Hempstead Road
Lancaster, PA 17605-0008
Phone 717/299-5211
A Division of High Industries, Inc.

ERECTION PLAN FOR BENTS
N.S. RAILWAY TEMP. TRESTLE BRIDGE OVER S.R. 0309
N.S. RAILWAY TEMP. TRESTLE BRIDGE STA. 8 + 671.276
MONTGOMERY COUNTY, PA
COMMONWEALTH OF PENNSYLVANIA
DEPARTMENT OF TRANSPORTATION

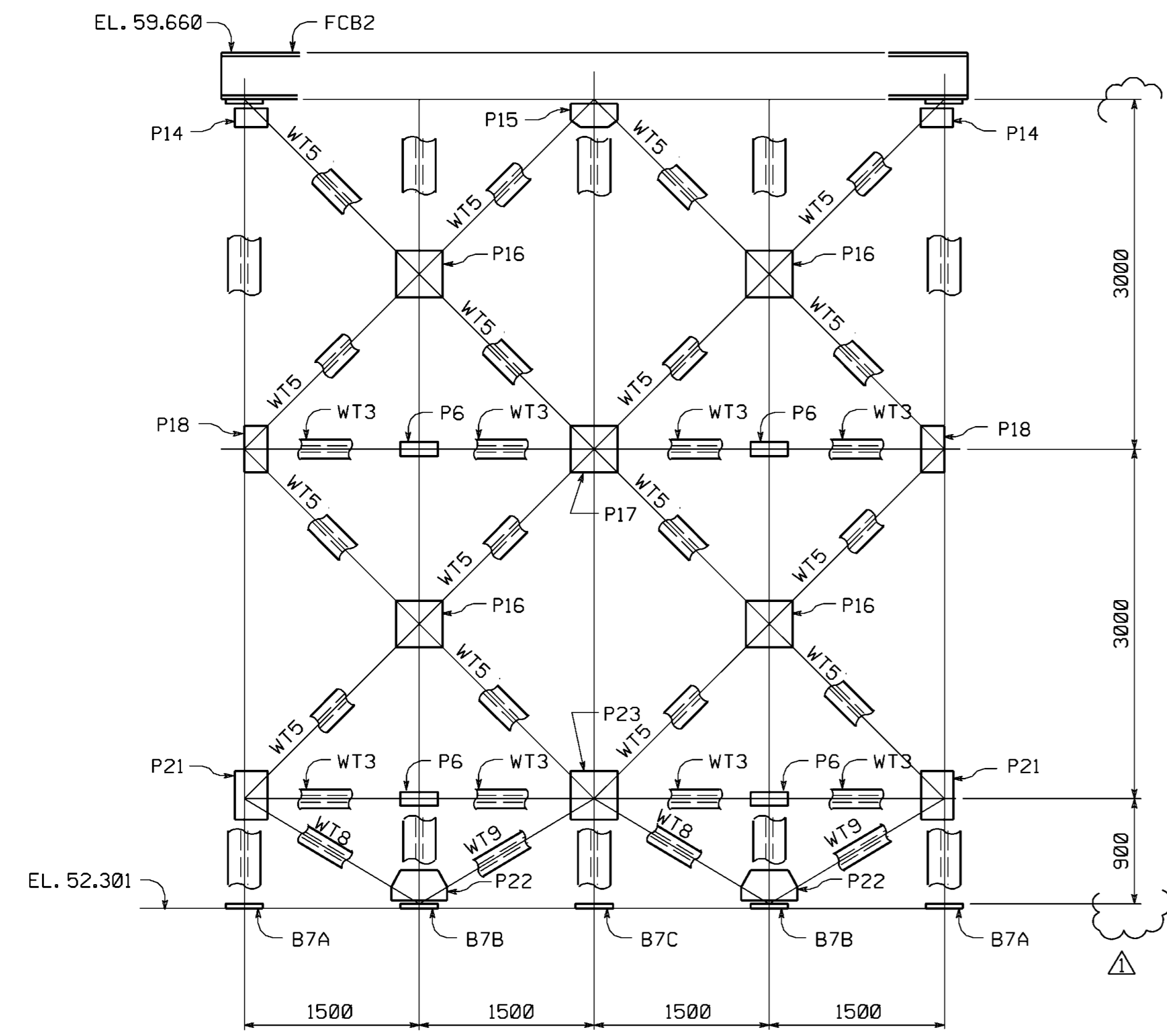
| | | | |
|----------------------------|---------------------------|-----------------|--------------|
| STATE CONTRACT OR REF. NO. | S-25417 | ECMS NO. | 64275 |
| CONTRACTOR | NYLEVE BRIDGE CORPORATION | | |
| IN CHARGE: | COLONIAL(WRC) | MADE BY: | RAS |
| CHK'D BY: | JTC | DATE: | 10-27-04 |
| CONTRACT NUMBER: | PA-04091-1 | DRAWING NUMBER: | E102 of E103 |

METRIC

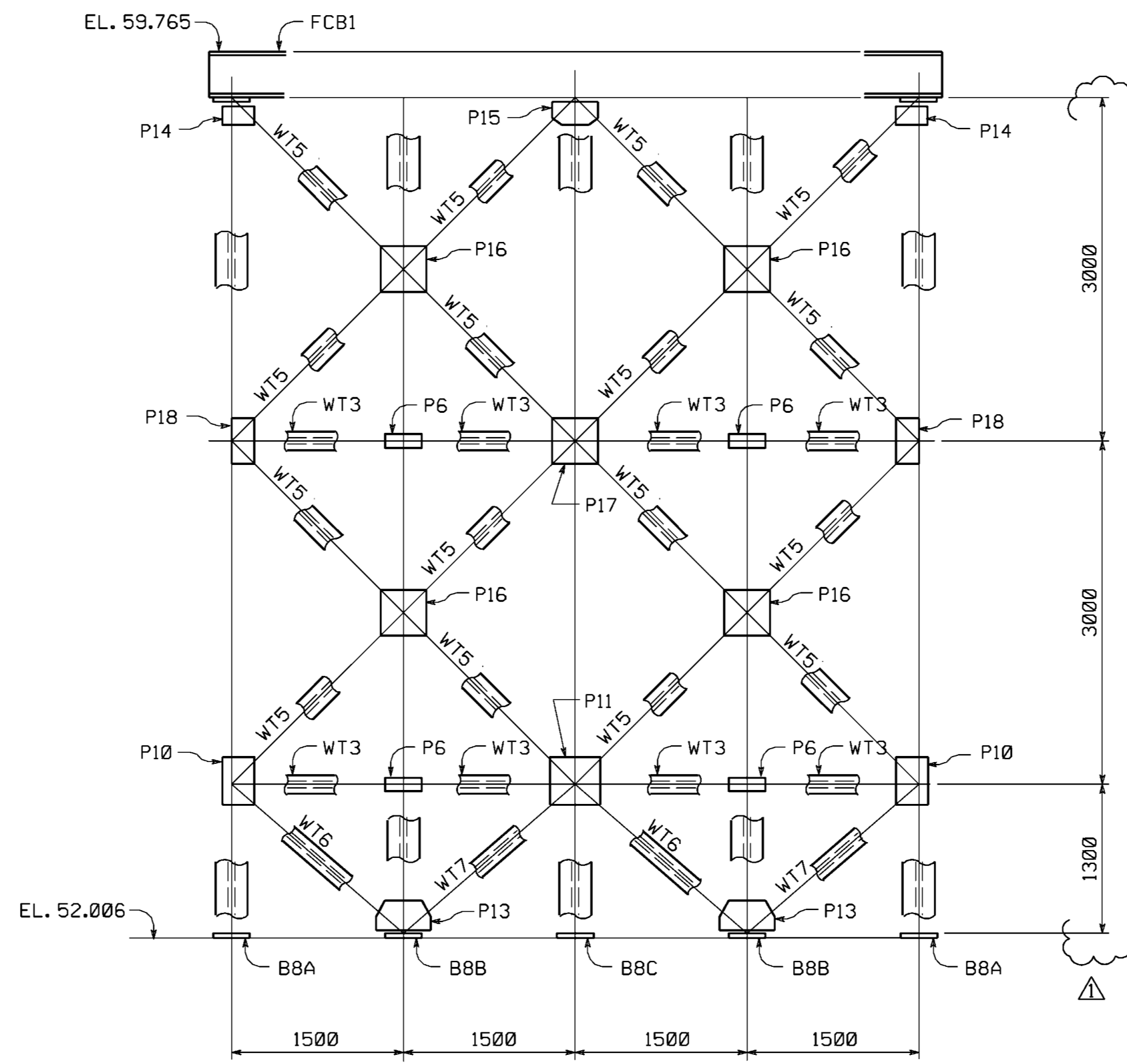
METRIC

1. ALL DIMENSIONS ARE IN MILLIMETERS UNLESS OTHERWISE NOTED.
2. ALL WEIGHTS ARE IN KILOGRAMS.

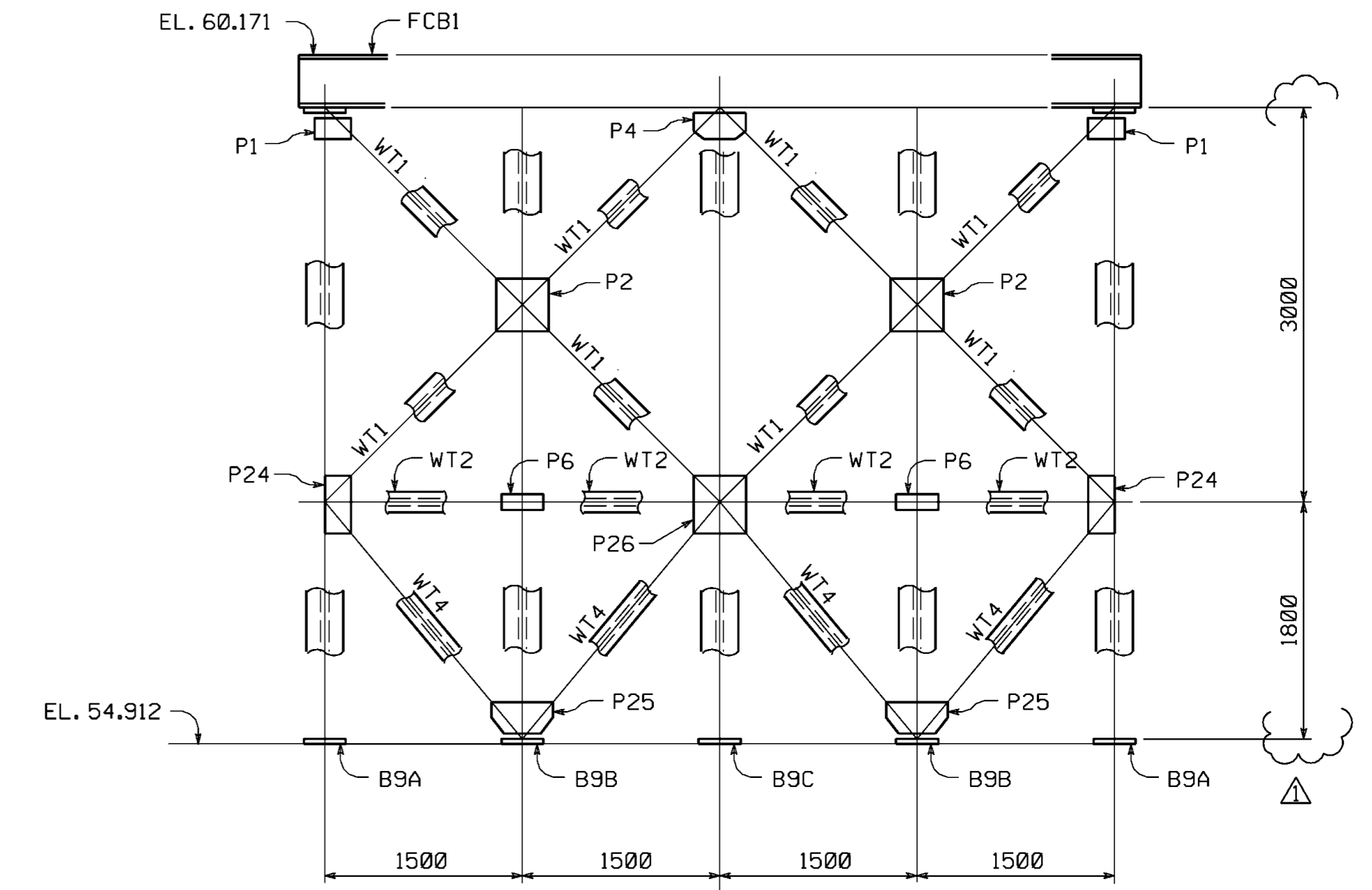
| | | |
|--------------------|-------|--------------------|
| FED. ROAD DIV. NO. | STATE | FED. AID PROJ. NO. |
| 3 | PA | |



BENT 7



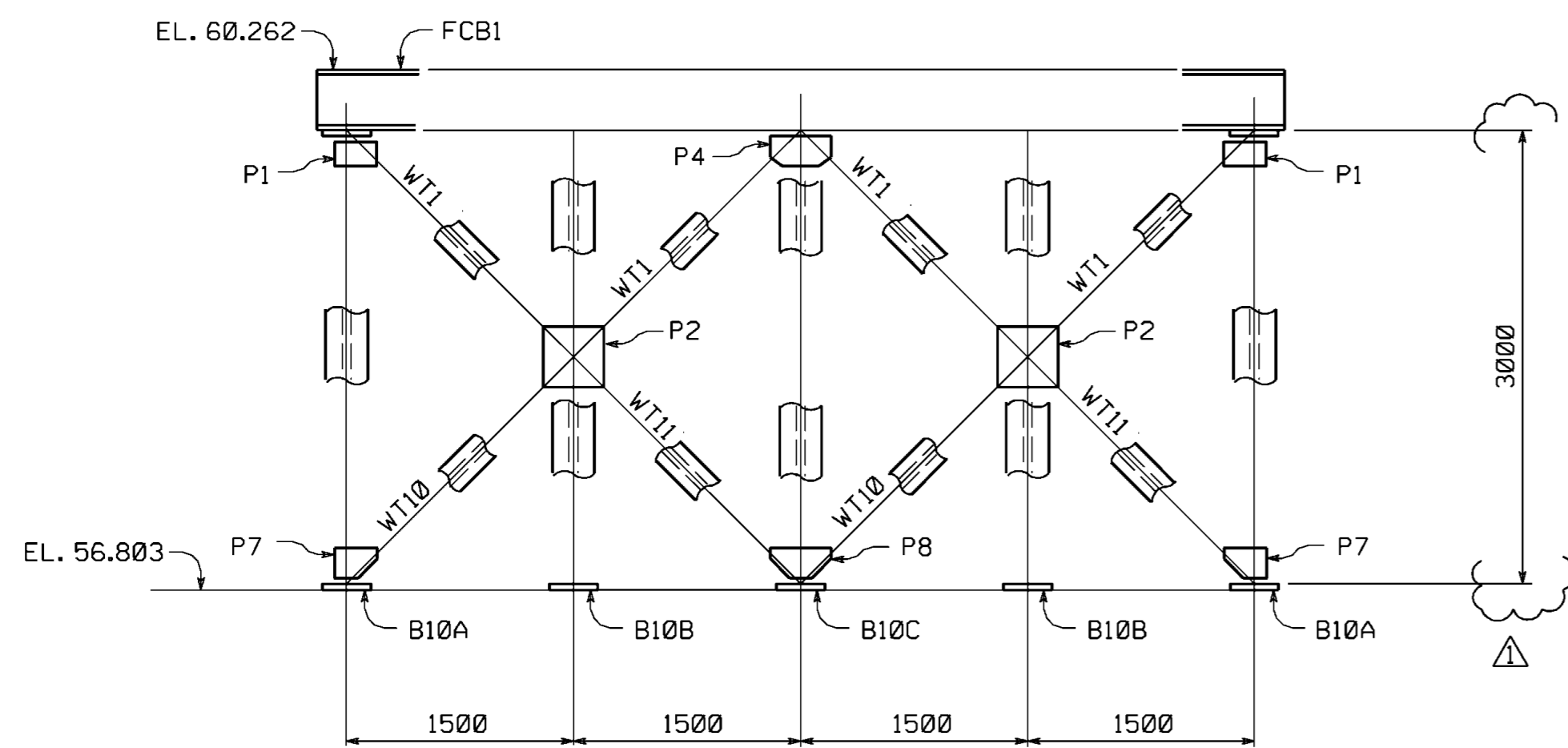
BENT 8



BENT 9

ERECTOR NOTE:
SHIPPING PIECE MARKS ARE ALIKE ON BOTH FACES OF ALL BENTS. PIECES PREFIXED B RUN FULL WIDTH OF BENT.

WORK THIS DWG. WITH DWG. E102



BENT 10

FIELD BOLT SUMMARY

(5% ADDITIONAL BOLTS ADDED +10 EA. FOR TESTING)

ASTM A325 TYPE 1 BOLTS WITH HVY. HEX HEAD AND
ASTM A563 GRADE DH HVY. HEX NUT (MECH. GALV. ASTM B-695 CLASS 50.)

| | | |
|--|---|---------|
| ALL CONN. R'S. TO HP310 FLG. & WT 100'S. TO 18 mm CONN. R'S. | 4983 - 1" HIGH STRENGTH BOLTS x 0'-3" | } (RCT) |
| ALL WT 100'S. TO 22mm CONN. R'S. | 178 - 1" HIGH STRENGTH BOLTS x 0'-3 1/4" | |
| ALL WT 125'S. TO CONN. R'S. | 1404 - 1" HIGH STRENGTH BOLTS x 0'-3 1/2" | |
| ALL CAP BEAMS TO CAP R'S. | 766 - 1" HIGH STRENGTH BOLTS x 0'-4 3/4" | |

7331 - HARD. FLAT F436 WASHERS FOR 1" H. S. BOLTS (RCT) (MECH. GALV. ASTM B-695 CLASS 50.)

(RCT) INDICATES ROTATIONAL CAPACITY TESTED BOLTS. DO NOT MIX NUTS, BOLTS AND WASHERS FROM DIFFERENT CONTAINERS UNLESS ALL NUTS, BOLTS AND WASHERS HAVE THE SAME LOT NUMBER.


NOTES:

NO CREDIT WILL BE ALLOWED FOR WORK PERFORMED BY OTHERS IN REPLACING OR CONNECTING MATERIALS OR WORKMANSHIP COVERED BY THIS DRAWING UNLESS EXPRESSLY AUTHORIZED BY HIGH STEEL STRUCTURES, INC.
ALL FIELD CONNECTIONS TO BE MADE WITH 1" HIGH STRENGTH (A325, TYPE 1) BOLTS (U.N.)
ALL DIMENSIONS ARE GIVEN HORIZONTALLY (U.N.)
BOLT LENGTHS ARE GIVEN IN INCHES.
ELEVATIONS ARE GIVEN IN METERS.

BY: c:n11

PLOTTED: 01/25/05 09:03:38 AM

68

| | | | |
|--|---------------|-----------------|--------------|
| ADDED VERTICAL PANEL DIMENSIONS ~ APPROVAL CHANGE | | RS | 1/24/05 |
| NO. | REVISION | BY | DATE |
|  HIGH STEEL STRUCTURES, INC. A Division of High Industries, Inc. | | | |
| ERECTION PLAN FOR BENTS | | | |
| N.S. RAILWAY TEMP. TRETTLE BRIDGE OVER S.R. 0309 | | | |
| N.S. RAILWAY TEMP. TRETTLE BRIDGE STA. 8 + 671.276 | | | |
| MONTGOMERY COUNTY, PA | | | |
| COMMONWEALTH OF PENNSYLVANIA | | | |
| DEPARTMENT OF TRANSPORTATION | | | |
| STATE CONTRACT OR REF. NO. | S-25417 | ECMS NO. | 64275 |
| CONTRACTOR NYLEVE BRIDGE CORPORATION | | | |
| IN CHARGE: | COLONIAL(WRC) | MADE BY: | RAS |
| CHK'D BY: | JTC | DATE: | 10-27-04 |
| CONTRACT NUMBER: | PA-04091-1 | DRAWING NUMBER: | E103 of E103 |

METRIC

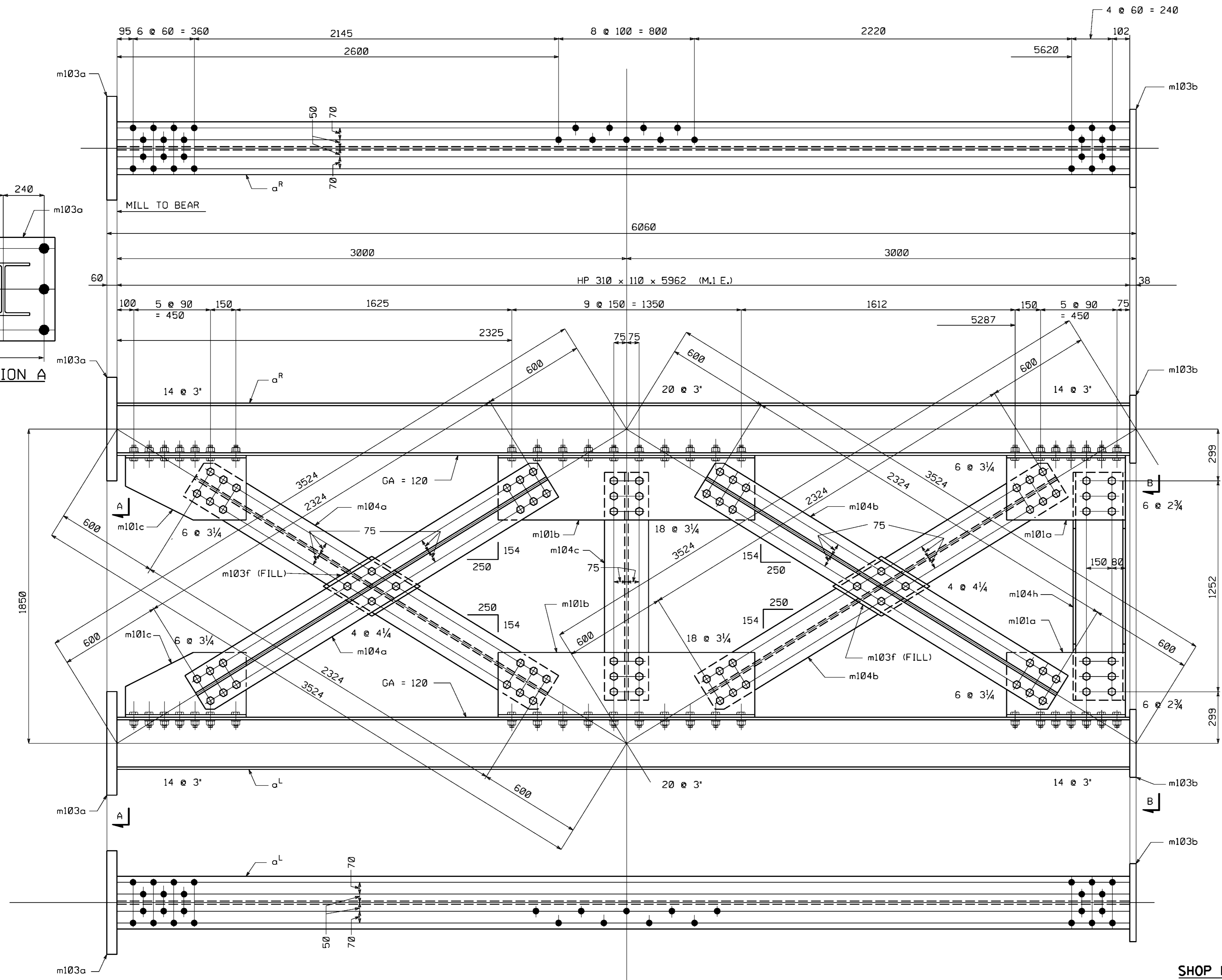
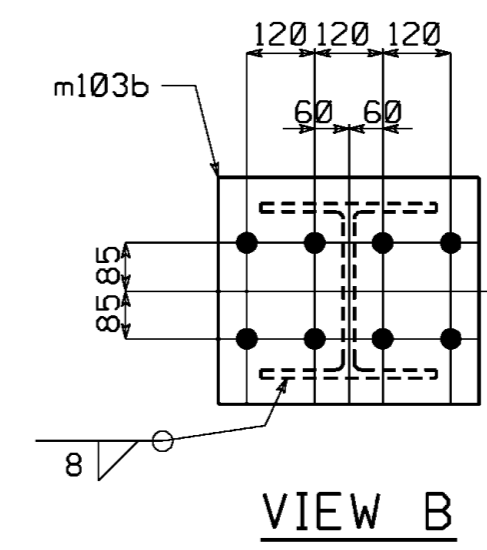
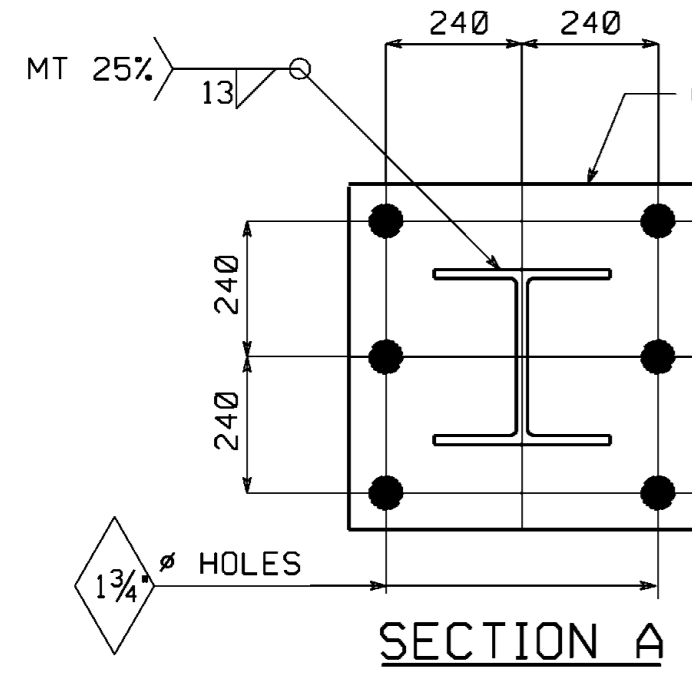
METRIC

1. ALL DIMENSIONS ARE IN MILLIMETERS UNLESS OTHERWISE NOTED.
2. ALL WEIGHTS ARE IN KILOGRAMS.

| | | |
|--------------------|-------|--------------------|
| FED. ROAD DIV. NO. | STATE | FED. AID PROJ. NO. |
| 3 | PA | |

BILL OF MATERIAL

| NO. | MARK | DESCRIPTION | LENGTH | REMARKS | ITEM | SHIP. WEIGHT EX. |
|-----|----------------|---------------------------|--------|------------------------------|------|------------------|
| 2 | B2A | BENT ASS'Y | | | | 3247kg |
| 2 | B4A | BENT ASS'Y | | | | 3247kg |
| 8 | a ^R | HP 310x110 | 5962 | MIE (T) (HP 12 x 74) | | |
| 8 | m103a | PL 60x610 | 610 | (T) A709M GR. 250 | | |
| 8 | m103b | PL 38x400 | 460 | (T) A709M GR. 250 | | |
| 8 | m103f | PL 14x280 | 454 | FILL (T) | | |
| 8 | m104a | WT 125x65.5 | 2424 | (WT 5x44) (T) A709M GR. 250 | | |
| 8 | m104b | WT 125x65.5 | 2424 | (WT 5x44) (T) A709M GR. 250 | | |
| 4 | m104c | WT 125x65.5 | 1352 | (WT 5x44) (T) A709M GR. 250 | | |
| 4 | m104h | HP 310x110 | 1352 | (HP 12x74) (T) | | |
| 8 | m101a | WT 380x86.5 | 700 | (WT 15x58) (T) A709M GR. 250 | | |
| 8 | m101b | WT 380x86.5 | 1510 | (WT 15x58) (T) A709M GR. 250 | | |
| 8 | m101c | WT 380x86.5 | 710 | (WT 15x58) (T) A709M GR. 250 | | |
| 48 | | 1" H.S. BOLTS | 2 3/4" | | | |
| 384 | | 1" H.S. BOLTS | 3" | | | |
| 240 | | 1" H.S. BOLTS | 3 1/4" | | | |
| 32 | | 1" H.S. BOLTS | 4 1/4" | | | |
| 704 | | WASHERS FOR 1" H.S. BOLTS | | | | |



BENT ASSEMBLY MK. B2A
BENT ASSEMBLY MK. B4A

SHOP NOTE

HOLES: 1/16" (UN)
BOLTS: AS NOTED
PAINT: SEE DWG. GNI
FOR GENERAL SHOP NOTES, SEE DWG. GNI.

| NO. | REVISION | BY | DATE |
|-----|----------|----|------|
| | | | |

HIGH STEEL STRUCTURES, INC.
1770 Hempstead Road
Lancaster, PA 17605-0008
Phone 717/299-5211
A Division of High Industries, Inc.

BENTS
N.S. RAILWAY TEMP. TRESTLE BRIDGE OVER S.R. 0309
N.S. RAILWAY TEMP. TRESTLE BRIDGE STA. 8 + 671.276
MONTGOMERY COUNTY, PA
COMMONWEALTH OF PENNSYLVANIA
DEPARTMENT OF TRANSPORTATION

STATE CONTRACT OR REF. NO. S-25417 ECMS NO. 64275
CONTRACTOR NYLEVE BRIDGE CORPORATION
IN CHARGE: COLONIAL(WRC) MADE BY: JTC CHK'D BY: RAS DATE: 10/13/04
CONTRACT NUMBER: PA-04091-1 DRAWING NUMBER: 102 OF 132

BY: c:n11
PLOTTER: 01/25/05 07:35:55 AM

METRIC

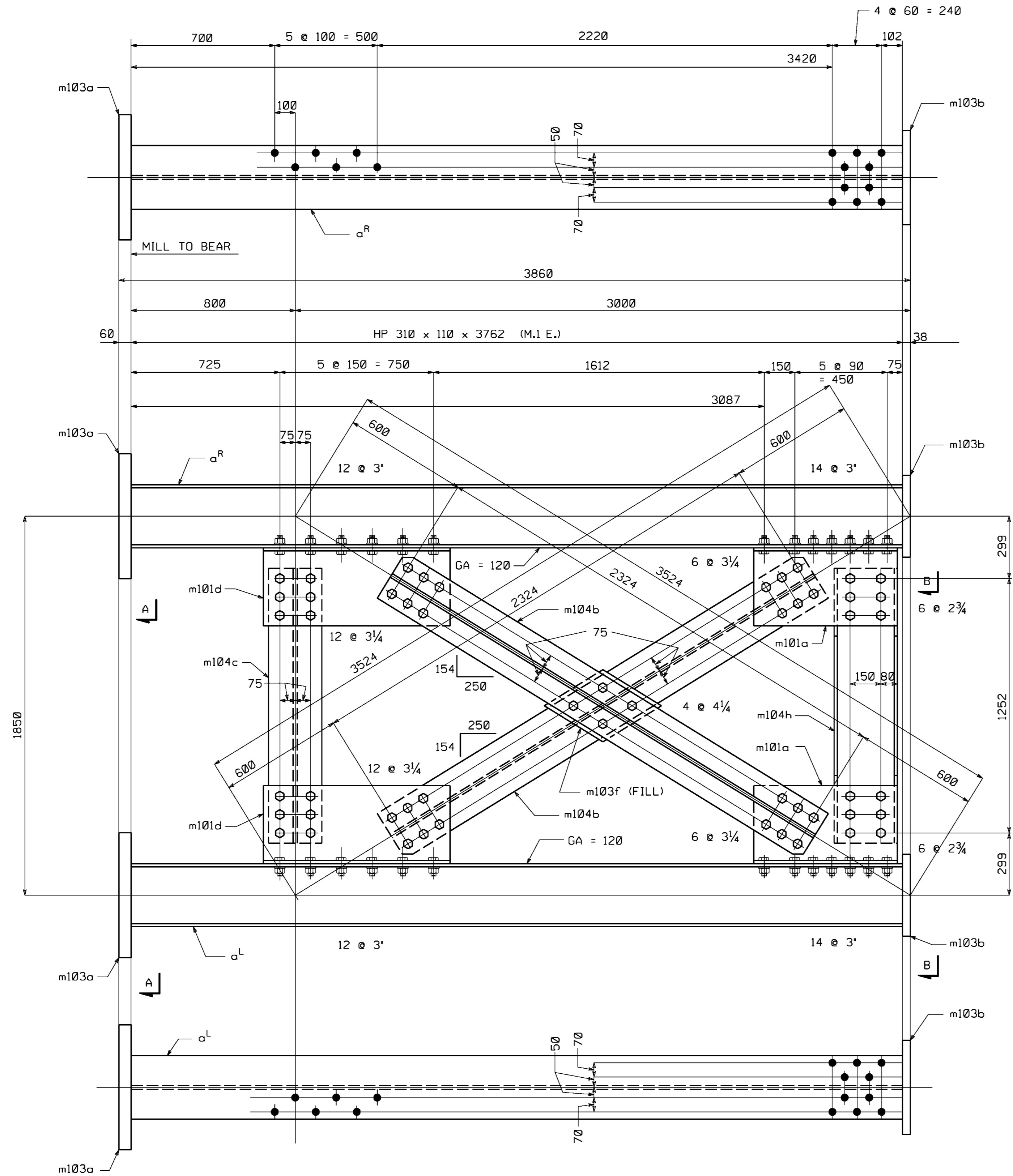
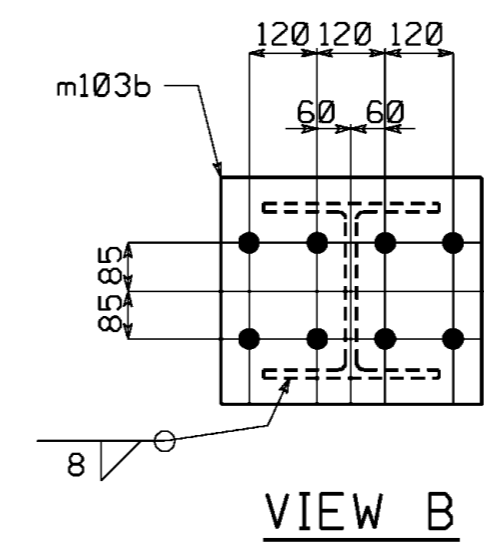
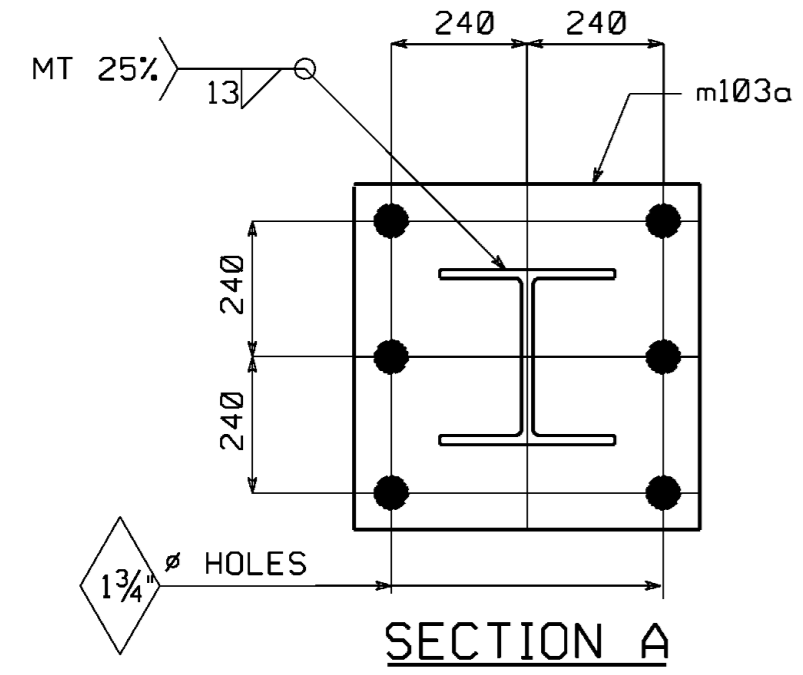
METRIC

1. ALL DIMENSIONS ARE IN MILLIMETERS UNLESS OTHERWISE NOTED.
2. ALL WEIGHTS ARE IN KILOGRAMS.

| | | |
|--------------------|-------|--------------------|
| FED. ROAD DIV. NO. | STATE | FED. AID PROJ. NO. |
| 3 | PA | |

BILL OF MATERIAL

| NO. | MARK | DESCRIPTION | LENGTH | REMARKS | ITEM | SHIP. WEIGHT EST. |
|-----|----------------|-----------------------------|--------|---------------------|--------------|-------------------|
| 2 | B6A | BENT ASS'Y | | | | 2183kg |
| 4 | a ^R | HP 310x110 | 3762 | MIE (T) (HP 12 x74) | | |
| 4 | m103a | PL 60x610 | 610 | (T) | A709M GR 250 | |
| 4 | m103b | PL 38x400 | 460 | (T) | A709M GR 250 | |
| 2 | m103f | PL 14x280 | 454 | FILL (T) | | |
| 4 | m104b | WT 125x65.5 | 2424 | (WT 5x44)(T) | A709M GR 250 | |
| 2 | m104c | WT 125x65.5 | 1352 | (WT 5x44)(T) | A709M GR 250 | |
| 2 | m104h | HP 310x110 | 1352 | (HP 12x74)(T) | | |
| 4 | m101a | WT 380x86.5 | 700 | (WT 15x58)(T) | A709M GR 250 | |
| 4 | m101d | WT 380x86.5 | 910 | (WT 15x58)(T) | A709M GR 250 | |
| 24 | | 1" # H.S. BOLTS | 2 3/4" | | | |
| 104 | | 1" # H.S. BOLTS | 3" | | | |
| 72 | | 1" # H.S. BOLTS | 3 1/4" | | | |
| 8 | | 1" # H.S. BOLTS | 4 1/4" | | | |
| 208 | | WASHERS FOR 1" # H.S. BOLTS | | | | |



BENT ASSEMBLY MK. B6A

SHOP NOTE

HOLES: 1 1/16" (UN)
BOLTS: AS NOTED
PAINT: SEE DWG. G01
 FOR GENERAL SHOP NOTES, SEE DWG. G01.

| | | | |
|-----|----------|----|------|
| NO. | REVISION | BY | DATE |
| | | | |

HIGH STEEL STRUCTURES, INC.
 1770 Hempstead Road
 Lancaster, PA 17605-0008
 Phone 717/299-5211
 A Division of High Industries, Inc.

BENTS
 N.S. RAILWAY TEMP. TRESTLE BRIDGE OVER S.R. 0309
 N.S. RAILWAY TEMP. TRESTLE BRIDGE STA. 8 + 671.276
 MONTGOMERY COUNTY, PA
 COMMONWEALTH OF PENNSYLVANIA
 DEPARTMENT OF TRANSPORTATION

STATE CONTRACT OR REF. NO. S-25417 ECMS NO. 64275
 CONTRACTOR NYLEVE BRIDGE CORPORATION
 IN CHARGE: COLONIAL(WRC) MADE BY: JTC CHK'D BY: RAS DATE: 10/15/04
 CONTRACT NUMBER: PA-04091-1 DRAWING NUMBER: 111 OF 132

BY: c:n11 PLOTTED: 01/25/05 08:05:34 AM

METRIC

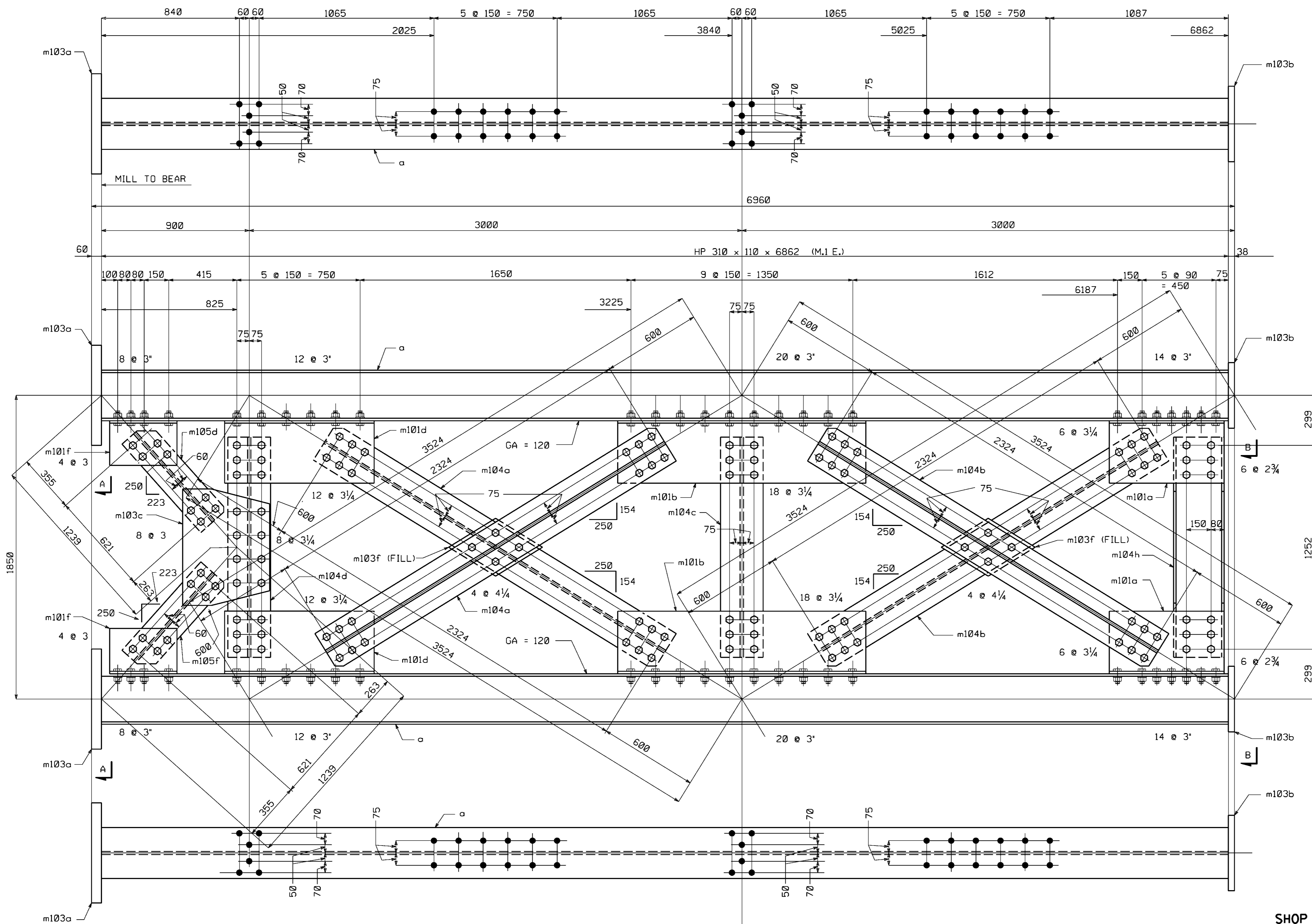
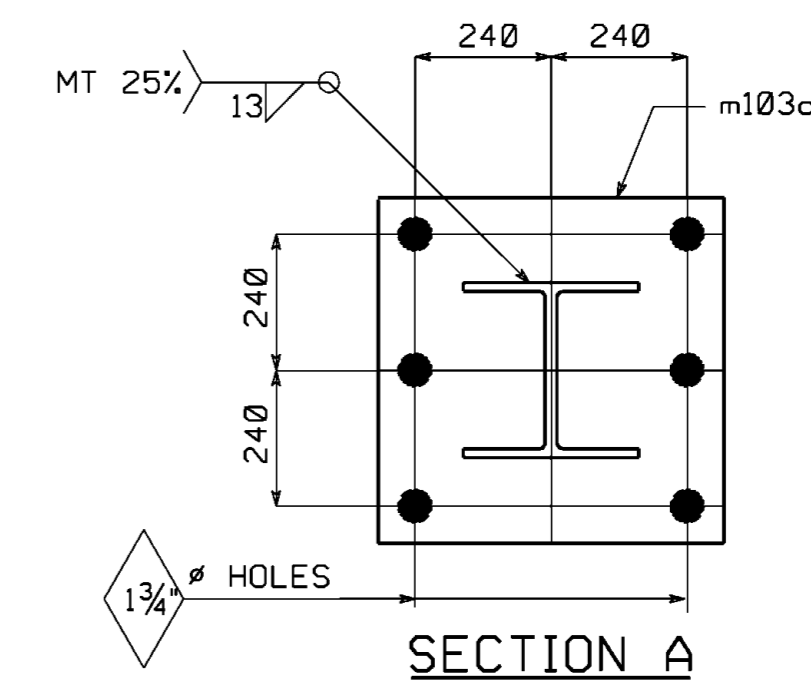
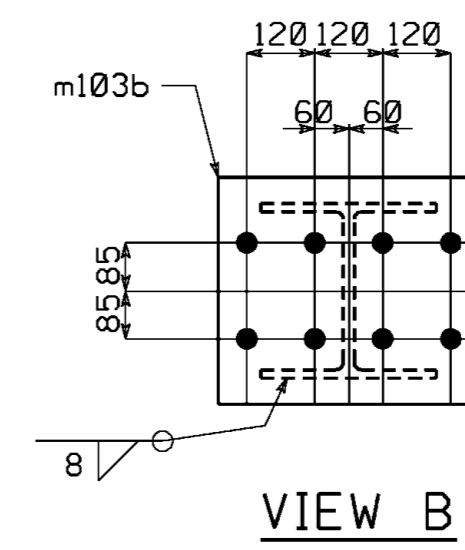
METRIC

1. ALL DIMENSIONS ARE IN MILLIMETERS UNLESS OTHERWISE NOTED.
2. ALL WEIGHTS ARE IN KILOGRAMS.

| | | |
|--------------------|-------|--------------------|
| FED. ROAD DIV. NO. | STATE | FED. AID PROJ. NO. |
| 3 | PA | |

BILL OF MATERIAL

| NO. | MARK | DESCRIPTION | LENGTH | REMARKS | ITEM | SHIP. WEIGHT E.A. |
|-----|-------|---------------------------|--------|---------------------|--------------|-------------------|
| 2 | B3B | BENT ASS'Y | | | | 3780kg |
| 4 | o | HP 310x110 | 6862 | MIE (T) (HP 12 x74) | | |
| 4 | m103a | 60x610 | 610 | (T) | A789M GR 250 | |
| 4 | m103b | 38x400 | 460 | (T) | A789M GR 250 | |
| 2 | m103c | 18x530 | 710 | (T) | A789M GR 250 | |
| 4 | m103f | 14x280 | 454 | FILL (T) | | |
| 4 | m104a | WT 125x65.5 | 2424 | (WT 5x44) (T) | A789M GR 250 | |
| 4 | m104b | WT 125x65.5 | 2424 | (WT 5x44) (T) | A789M GR 250 | |
| 2 | m104c | WT 125x65.5 | 1352 | (WT 5x44) (T) | A789M GR 250 | |
| 2 | m104d | WT 125x65.5 | 1352 | (WT 5x44) (T) | A789M GR 250 | |
| 2 | m104h | HP 310x110 | 1352 | (HP 12x74) (T) | | |
| 4 | m101a | WT 380x86.5 | 700 | (WT 15x58) (T) | A789M GR 250 | |
| 4 | m101b | WT 380x86.5 | 1510 | (WT 15x58) (T) | A789M GR 250 | |
| 4 | m101d | WT 380x86.5 | 910 | (WT 15x58) (T) | A789M GR 250 | |
| 4 | m101f | WT 265x82.5 | 410 | (WT 10.5x55.5) (T) | | |
| 2 | m105d | WT 100x43 | 721 | (WT 4x29) (T) | A789M GR 250 | |
| 2 | m105f | WT 100x43 | 721 | (WT 4x29) (T) | A789M GR 250 | |
| 24 | | 1" H.S. BOLTS | 2 3/4" | | | |
| 248 | | 1" H.S. BOLTS | 3" | | | |
| 160 | | 1" H.S. BOLTS | 3 1/4" | | | |
| 16 | | 1" H.S. BOLTS | 4 1/4" | | | |
| 448 | | WASHERS FOR 1" H.S. BOLTS | | | | |



BENT ASSEMBLY MK. B3B

SHOP NOTE

HOLES: 1 1/16" (UN)
BOLTS: AS NOTED
PAINT: SEE DWG. GNI
 FOR GENERAL SHOP NOTES, SEE DWG. GNI.

| NO. | REVISION | BY | DATE |
|-----|----------|----|------|
| | | | |
| | | | |
| | | | |

1770 Hempstead Road
 Lancaster, PA 17605-0008
 Phone 717/299-5211
HIGH STEEL STRUCTURES, INC.
 A Division of High Industries, Inc.

BENTS
 N.S. RAILWAY TEMP. TRESTLE BRIDGE OVER S.R. 0309
 N.S. RAILWAY TEMP. TRESTLE BRIDGE STA. 8 + 671.276
 MONTGOMERY COUNTY, PA
 COMMONWEALTH OF PENNSYLVANIA
 DEPARTMENT OF TRANSPORTATION

STATE CONTRACT OR REF. NO. S-25417 ECMS NO. 64275
 CONTRACTOR NYLEVE BRIDGE CORPORATION
 IN CHARGE: COLONIAL(WRC) MADE BY: JTC CHK'D: RAS DATE: 10/14/04
 CONTRACT NUMBER: PA-04091-1 DRAWING NUMBER: 106 OF 132

BY: c:nll
PLOTTED: 01/25/05 07:43:10 AM

CODE: P

METRIC

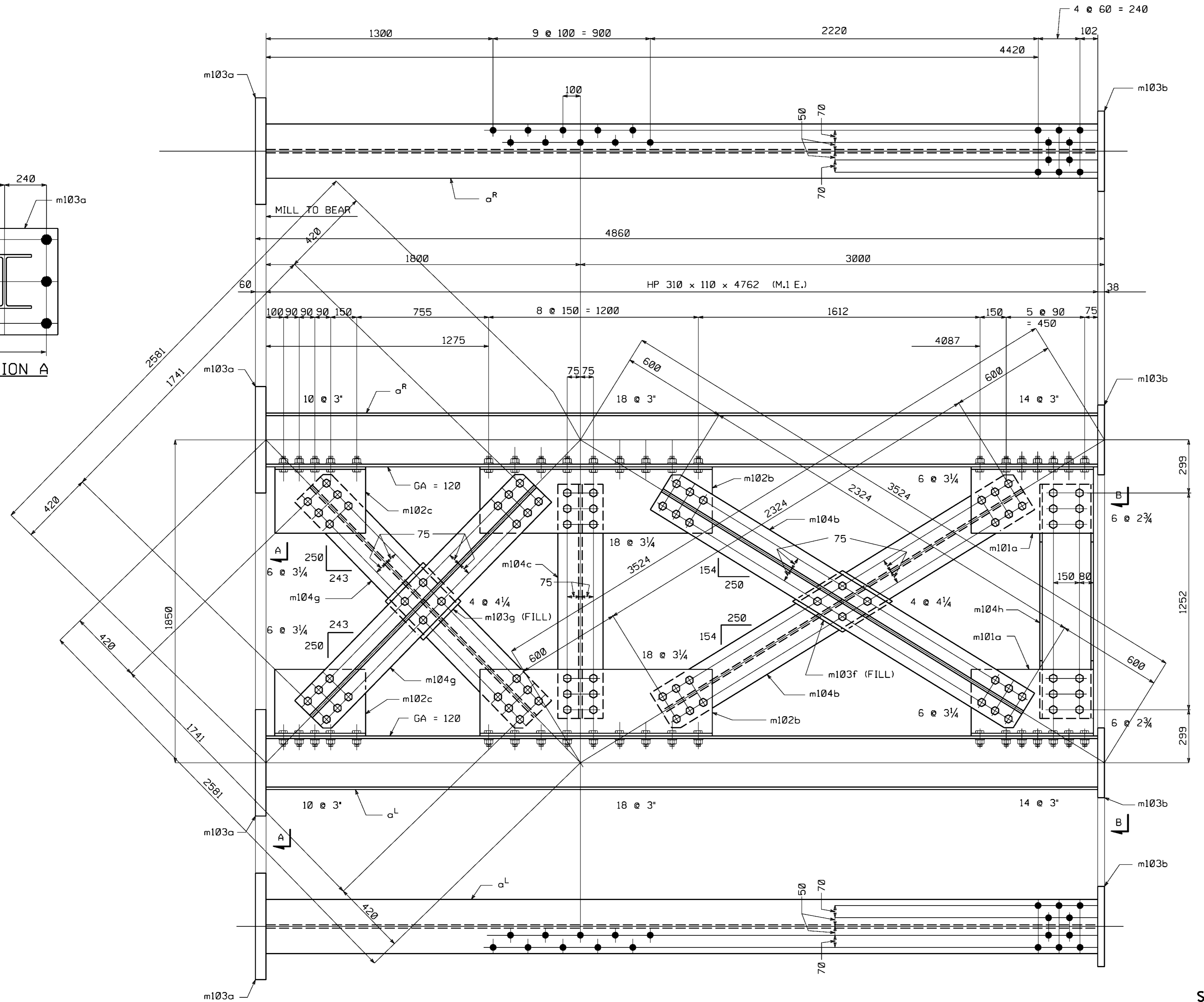
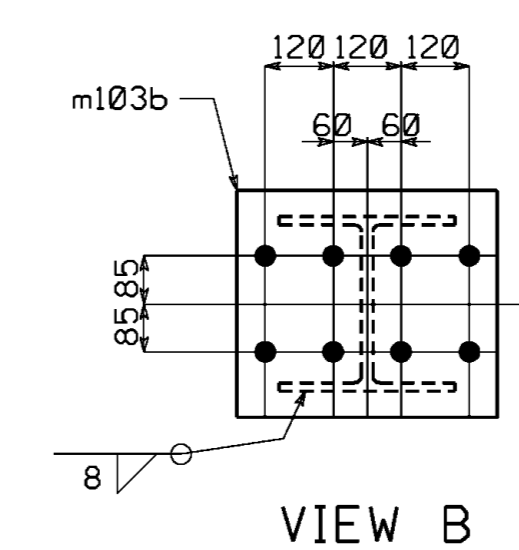
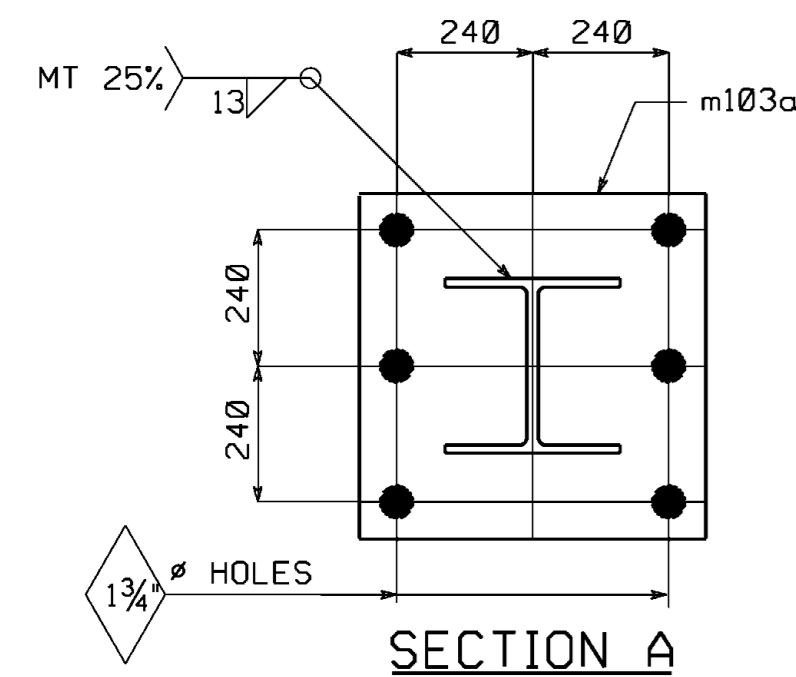
METRIC

1. ALL DIMENSIONS ARE IN MILLIMETERS UNLESS OTHERWISE NOTED.
2. ALL WEIGHTS ARE IN KILOGRAMS.

| | | |
|--------------------|-------|--------------------|
| FED. ROAD DIV. NO. | STATE | FED. AID PROJ. NO. |
| 3 | PA | |

BILL OF MATERIAL

| NO. | MARK | DESCRIPTION | LENGTH | REMARKS | ITEM | SHIP. WEIGHT EST. |
|-----|----------------|---------------------------|--------|---------------------|--------------|-------------------|
| 2 | B9A | BENT ASS'Y | | | | 2845kg |
| 4 | a ^R | HP 310x110 | 4762 | MIE (T) (HP 12 x74) | | |
| 4 | m103a | ∅ 60x610 | 610 | (T) | A709M GR 250 | |
| 4 | m103b | ∅ 38x400 | 460 | (T) | A709M GR 250 | |
| 2 | m103f | ∅ 14x280 | 454 | FILL (T) | | |
| 2 | m103g | ∅ 14x280 | 288 | FILL (T) | | |
| 4 | m104b | WT 125x65.5 | 2424 | (WT 5x44)(T) | A709M GR 250 | |
| 2 | m104c | WT 125x65.5 | 1352 | (WT 5x44)(T) | A709M GR 250 | |
| 4 | m104g | WT 125x65.5 | 1841 | (WT 5x44)(T) | A709M GR 250 | |
| 2 | m104h | HP 310x110 | 1352 | (HP 12x74)(T) | | |
| 4 | m101a | WT 380x86.5 | 700 | (WT 15x58)(T) | A709M GR 250 | |
| 4 | m102b | WT 380x86.5 | 1330 | (WT 15x58)(T) | A709M GR 250 | |
| 4 | m102c | WT 380x86.5 | 520 | (WT 15x58)(T) | A709M GR 250 | |
| 24 | | 1" H.S. BOLTS | 2 3/4" | | | |
| 168 | | 1" H.S. BOLTS | 3" | | | |
| 120 | | 1" H.S. BOLTS | 3 1/4" | | | |
| 16 | | 1" H.S. BOLTS | 4 1/4" | | | |
| 328 | | WASHERS FOR 1" H.S. BOLTS | | | | |



BENT ASSEMBLY MK. B9A

SHOP NOTE

HOLES: 1 1/16" (UN)
BOLTS: AS NOTED
PAINT: SEE DWG. GNI
 FOR GENERAL SHOP NOTES, SEE DWG. GNI.

| | | | |
|-----|----------|----|------|
| NO. | REVISION | BY | DATE |
| | | | |

HIGH STEEL STRUCTURES, INC.
 1770 Hempstead Road
 Lancaster, PA 17605-0008
 Phone 717/299-5211
 A Division of High Industries, Inc.

BENTS
 N.S. RAILWAY TEMP. TRESTLE BRIDGE OVER S.R. 0309
 N.S. RAILWAY TEMP. TRESTLE BRIDGE STA. 8 + 671.276
 MONTGOMERY COUNTY, PA
 COMMONWEALTH OF PENNSYLVANIA
 DEPARTMENT OF TRANSPORTATION

STATE CONTRACT OR REF. NO. S-25417 ECMS NO. 64275
 CONTRACTOR NYLEVE BRIDGE CORPORATION
 IN CHARGE: COLONIAL(WRC) MADE BY: JTC CHK'D BY: RAS DATE: 10/18/04
 CONTRACT NUMBER: PA-04091-1 DRAWING NUMBER: 120 OF 132

BY: c:n11
PLOTTED: 01/25/05 08:35:00 AM

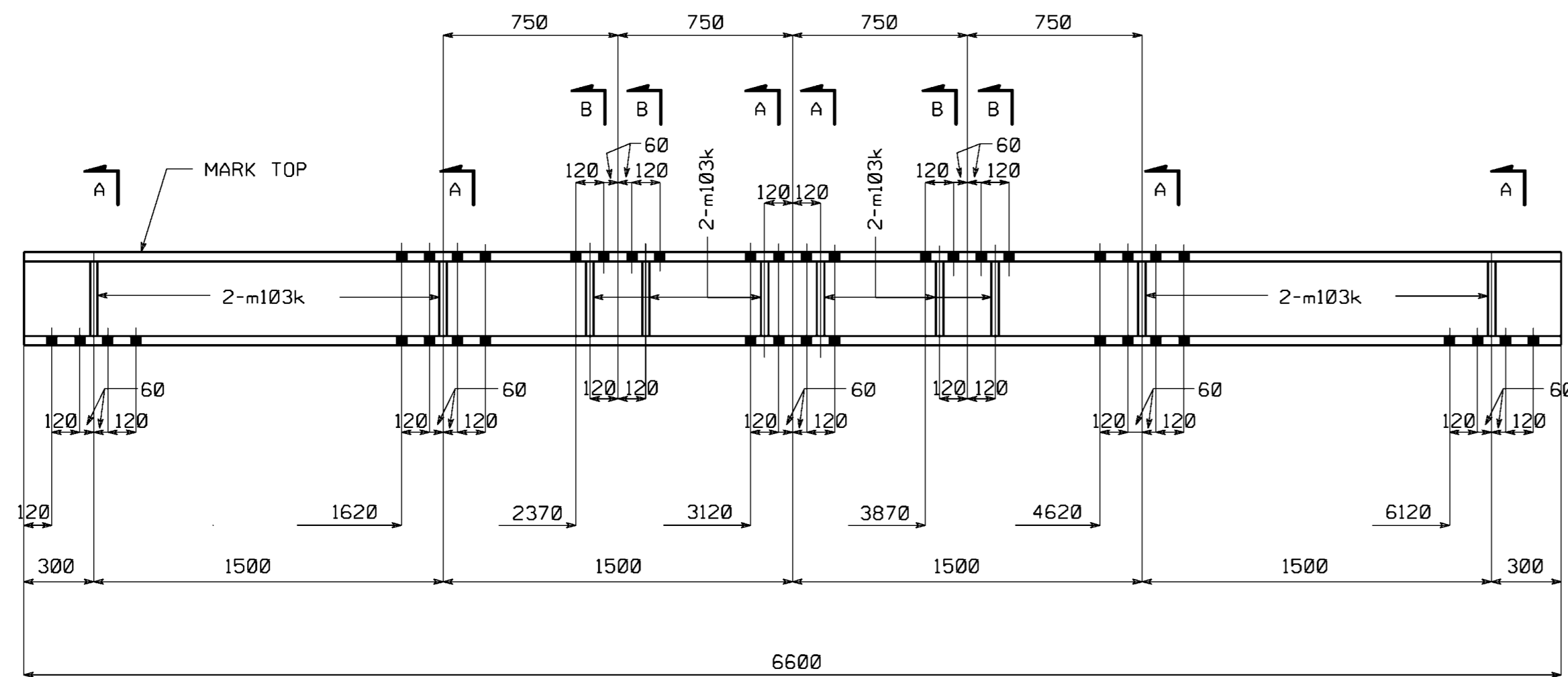
CODE: P

METRIC

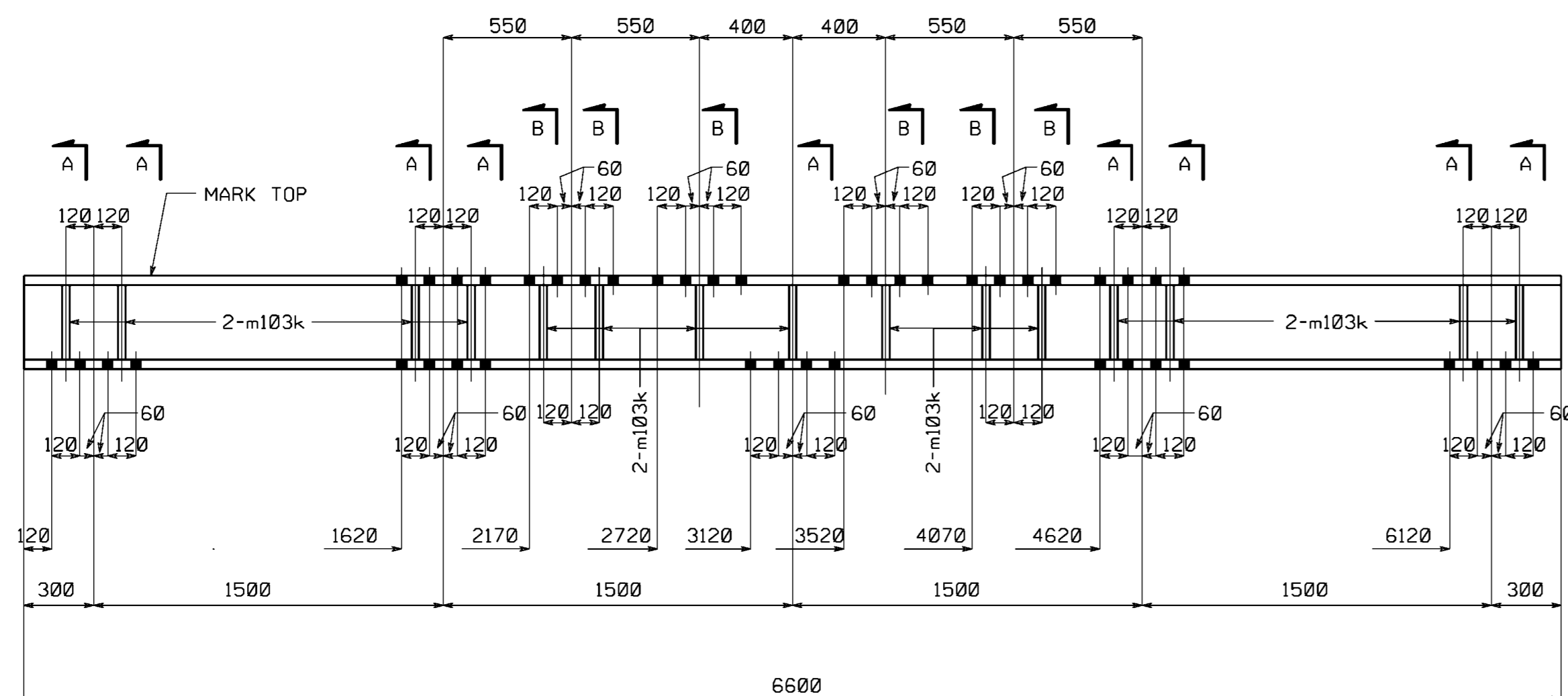
METRIC

1. ALL DIMENSIONS ARE IN MILLIMETERS UNLESS OTHERWISE NOTED.
2. ALL WEIGHTS ARE IN KILOGRAMS.

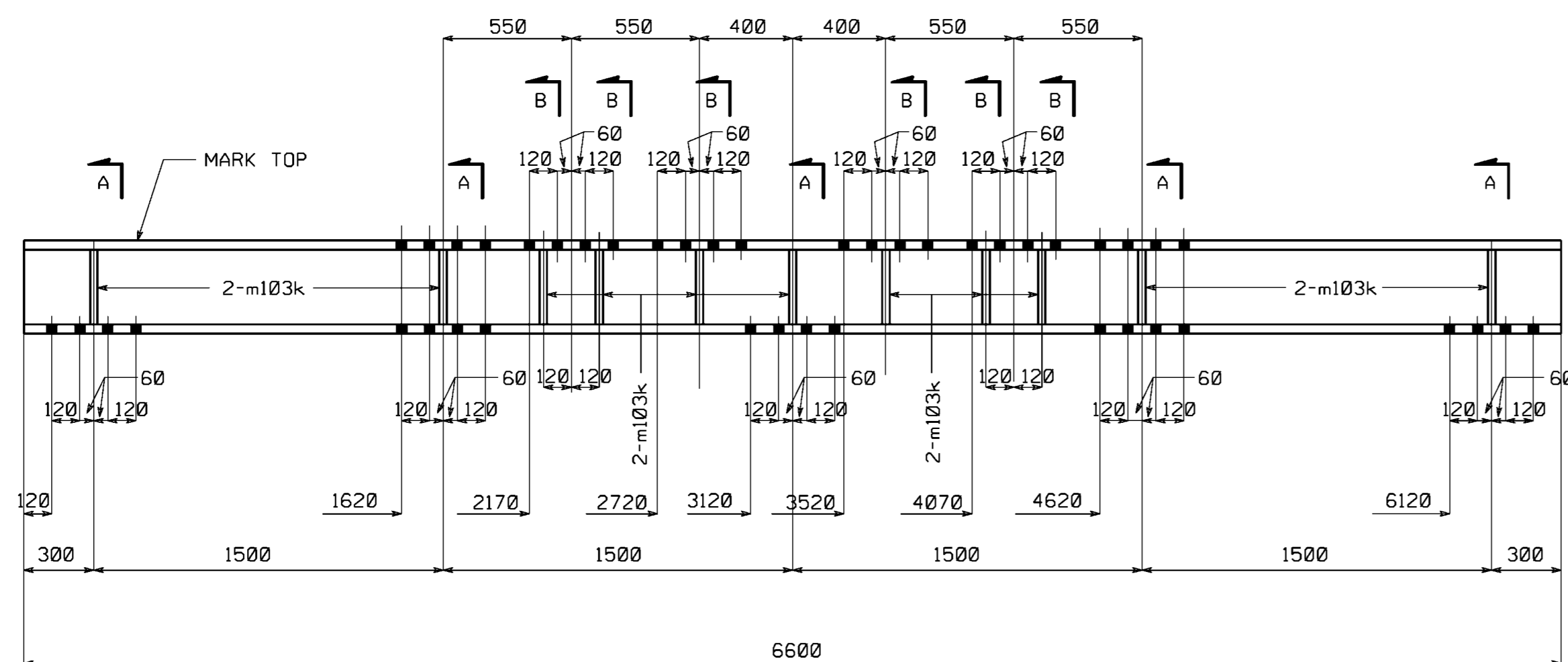
| | | |
|--------------------|-------|--------------------|
| FED. ROAD DIV. NO. | STATE | FED. AID PROJ. NO. |
| 3 | PA | |



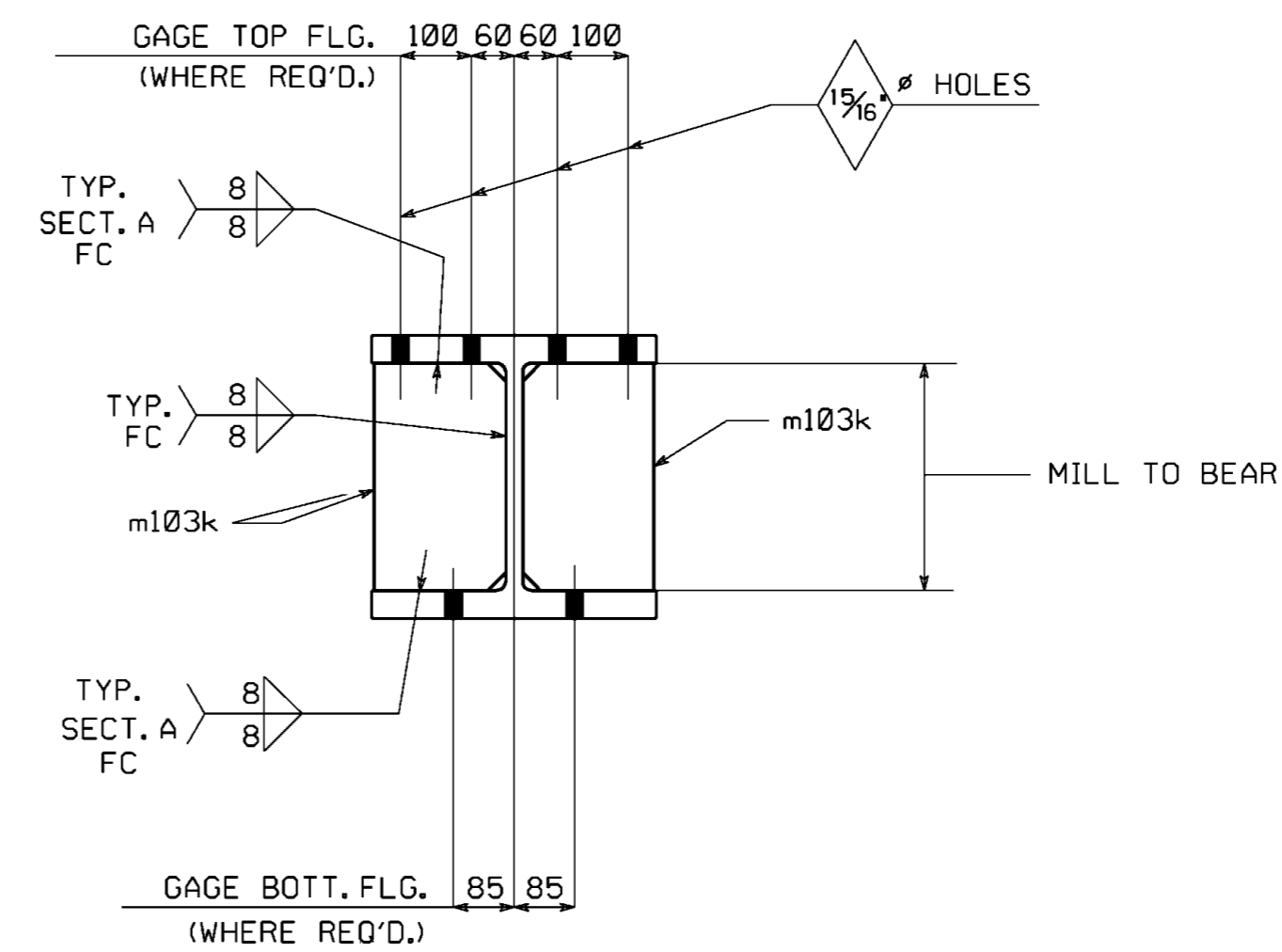
CAP BEAM MK. FCB1



CAP BEAM MK. FCB2



CAP BEAM MK. FCB3



SECTS. A & B

BILL OF MATERIAL

| NO. | MARK | DESCRIPTION | LENGTH | REMARKS | ITEM | SHIP. WEIGHT EST. |
|-----|-------|-------------|--------|-----------------|------|-------------------|
| 12 | FCB1 | W360 x 314 | 6600 | FCM (W14 x 211) | | 2260kg |
| 240 | m103k | 20X185 | 320 | FCM | | |
| 4 | FCB2 | W360 x 314 | 6600 | FCM (W14 x 211) | | 2351kg |
| 120 | m103k | 20X185 | 320 | FCM | | |
| 2 | FCB3 | W360 x 314 | 6600 | FCM (W14 x 211) | | 2277kg |
| 44 | m103k | 20X185 | 320 | FCM | | |

| | | |
|--|----|---------|
| ADDED : FC INDICATES FRACTURE CRITICAL | RS | 1/24/05 |
| ~ APPROVAL CHANGE | BY | DATE |

| | |
|--|---|
| | |
| BENTS - CAP BEAMS | |
| N.S. RAILWAY TEMP. TRESTLE BRIDGE OVER S.R. 0309 | |
| N.S. RAILWAY TEMP. TRESTLE BRIDGE STA. 8 + 671.276 | |
| MONTGOMERY COUNTY, PA | |
| COMMONWEALTH OF PENNSYLVANIA | |
| DEPARTMENT OF TRANSPORTATION | |
| STATE CONTRACT OR REF. NO. | S-25417 ECMS NO. 64275 |
| CONTRACTOR | NYLEVE BRIDGE CORPORATION |
| IN CHARGE: | COLONIAL(WRC) MADE BY: JTC CHK'D BY: RAS DATE: 10/20/04 |
| CONTRACT NUMBER: | PA-04091-1 DRAWING NUMBER: 126 OF 132 |

SHOP NOTE

HOLES: 1 1/16" (UN)
BOLTS: NONE
PAINT: SEE DWG. GNI
 FOR GENERAL SHOP NOTES, SEE DWG. GNI.

FC INDICATES FRACTURE CRITICAL

BY: c:n1

PLOTTED: 01/25/05 08:50:40 AM

60

CODE: P