

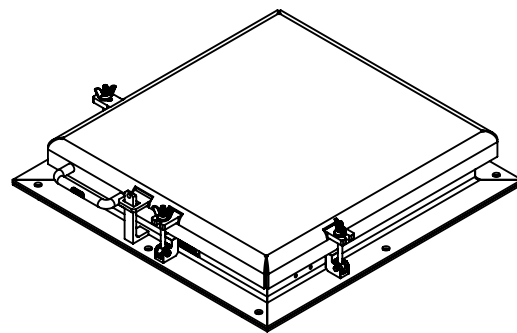
# VERSA STEEL Approval Drawings

## HATCH ASSEMBLY-NO GAS SPRING, 24 X 24-CLOSED

Assembly No.:VSH-150-A-24-24-S-NS

ASSEMBLY NO./PART NUMBER KEY:

VSH= VERSA STEEL INC. HATCH  
 150 = 150 P.S.F. RATED  
 A= ALUMINUM CONSTRUCTION  
 24-24= SIZE INTERIOR OPENING  
 S = SMALL SERIES  
 NS= NO GAS SPRING ASSIST



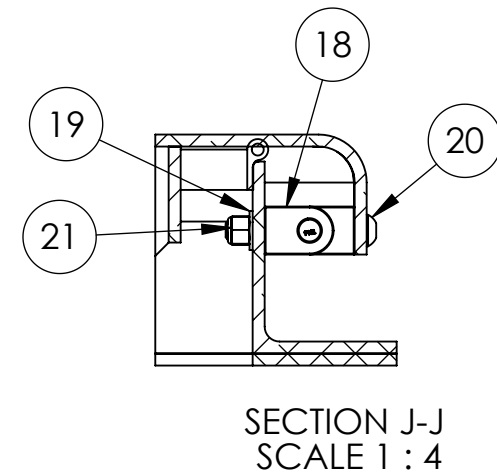
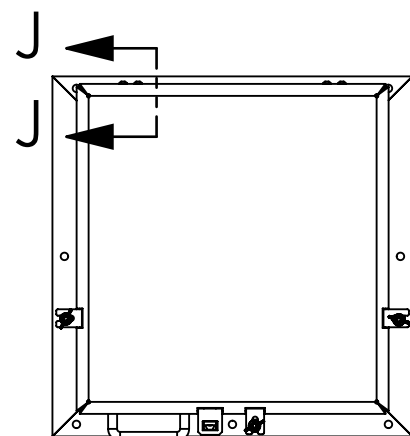
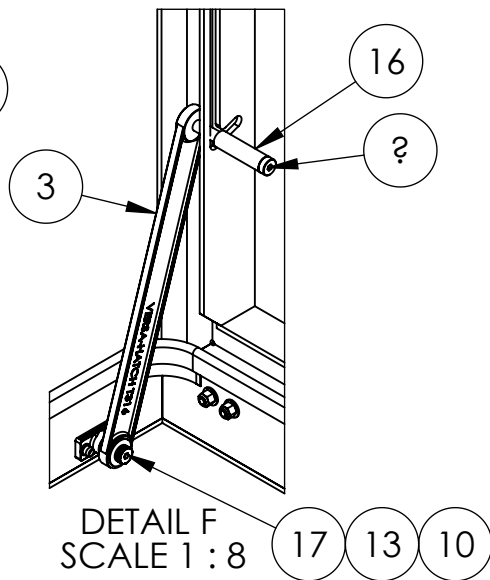
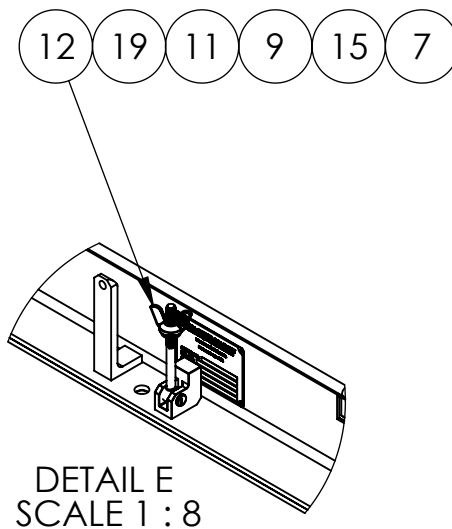
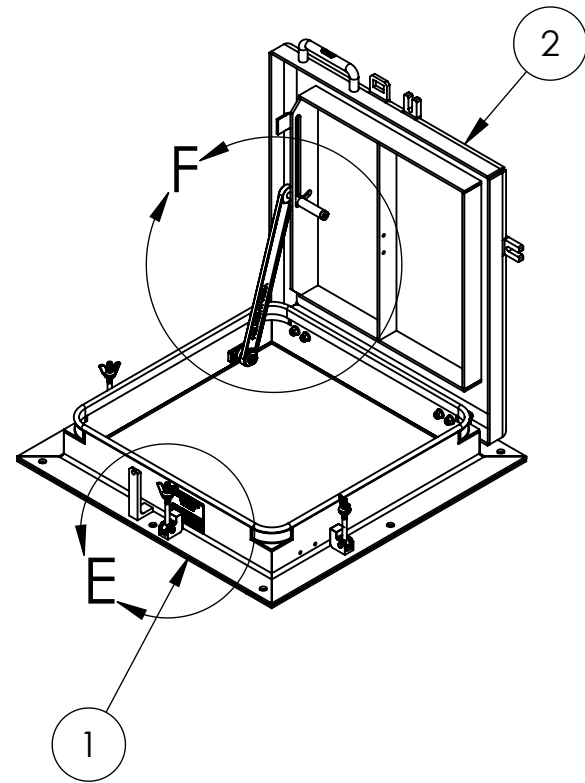
### GENERAL SPECIFICATIONS:

- UNIT IS WATER TIGHT WITH CONTINUOUS BULB SEAL ON LID TO FRAME AND 1/4" X 3" WIDE FRAME TO CURB SEALS.
- LID OVER LAPS FRAME A MINIMUM OF 2 INCHES. HINGED WITH STAINLESS STEEL PINTLE HINGE.
- FRAME IS A MINIMUM OF 4" ABOVE THE CURB.
- LID IS HINGED ON SIDE WITH TAMPER PROOF SCREWS . THERE ARE A MINIMUM OF THREE SWING BOLT HOLD DOWNS TO SECURE THE HATCH FOR WATER TIGHT SEAL.
- HATCH IS DESIGNED FOR 150 P.S.F. LOAD.
- THERE ARE 8 EXTERIOR ATTACHMENT POINTS FOR 1/2" FASTENER. THERE IS A FULL FACE GASKET OF 3" WIDE CLOSED CELL FOAM EPDM BETWEEN FRAME AND CURB.
- LID IS A 1/4" 5086 ALUMINUM PLATE.
- ALL FASTENERS AND HARDWARE ARE 316 STAINLESS STEEL.

THIS DOCUMENT CONTAINS PROPRIETARY, TRADE SECRET INFORMATION THAT IS THE PROPERTY OF VERSA STEEL, INC. THE INFORMATION CONTAINED IN THIS DOCUMENT, INCLUDING THE PRINCIPLE OF DESIGN, MAY NOT BE USED OR COPIED, IN WHOLE OR IN PART, WITHOUT THE EXPRESS PRIOR WRITTEN CONSENT OF VERSA STEEL, INC.

MATERIAL 6061-T6 ALUMINUM FINISH BARE SHEET TITLE HATCH ASSEMBLY-NO GAS SPRING, 24 X 24-CLOSED PART NUMBER: VSH-150-A-24-24-S-NS	DRAWN BY E. BAILIFF DATE 2013-12-23 CHECKED BY APPROVED BY	VERSA STEEL, INC. 1618 NE FIRST AVENUE PORTLAND, OREGON 97232 (503)287-9822 FAX (503)-287-7483	G F E D C B A REV ISSUED FOR DATE BY
--	---	--	--

PART NUMBER VSH-150-A-24-24-S-NS
SUPPLIER FABRICATED PART
SCALE 1:16
DRAWING NO. VSH-150-A-24-24-S-NS-APPF
REVISION NO. C
SHEET NO. 1 OF 3



ITEM NO.	PART NUMBER	DESCRIPTION	QTY
1	7000544-24X24	FRAME 24 X 24	1
2	7000545-24X24	LID WELDMENT 24 X 24	1
3	1000524-24	3/4" HOLD OPEN ARM, 24, 316 SST	1
4	1000525-24X24	HATCH SEAL, 24 X 24	1
5	1000527-24	SEAL, BASE WIDTH 24	2
6	1000526-24	SEAL, BASE SIDE 24	2
7	VS-37	.375 Dia External, single turn, retaining ring-T316	3
8	1000740	DATA PLATE	1
9	1000664	Clevis Pin 3/8x1	3
10	GFI-0809-08	FLANGED BEARING	1
11	1000059	ROD END 3/8" ID X 3/4" OD X 4 1/2" LG W/ 3/8-16 THRD X 2" LG	3
12	1000061	WING NUT, 3/8-16 UNC	3
13	1000844-08	WASHER, 1/2" ID X .06", NYLON	1
14	1000060	SH SHOULDER SCREW, 3/8"-16 X 1/2" X 4.0 LG 316	1
15	1000793-06	SRING LOCK WASHER, 3/8", 316	3
16	9446K71	LOCK BAR COVERING, GP PVC TUBING, RED	1
17	1000656	Shoulder Bolt 1/2x5/8	1
18	7000543	PINTLE HINGE ASSEMBY-T316	2
19	1000791-06	WASHER, FLAT, NARROW, 3/8", 316	11
20	1001739-16	Pin-Allen Button Head, -3/8-16 X 1, 18-8	4
21	1000796-06	HEX NUT, NYLON LOCKING, 3/8-16, 316	8

NOTES:  
 PN: VSH-150-A-24-24-S-NS  
 DESC: HATCH ASSEMBLY-NO GAS SPRING, 24 X 24  
 MATRL: 6061-T6 ALUMINUM  
 EST. WT: 53.9  
 FINISH: BARE  
 NOTE: -  
 CAD FILE: VSH-150-A-24-24-S-NS-APPROVAL

THIS DOCUMENT CONTAINS PROPRIETARY, TRADE SECRET INFORMATION THAT IS THE PROPERTY OF VERSA STEEL, INC. THE INFORMATION CONTAINED IN THIS DOCUMENT, INCLUDING THE PRINCIPLE OF DESIGN, MAY NOT BE USED OR COPIED, IN WHOLE OR IN PART, WITHOUT THE EXPRESS PRIOR WRITTEN CONSENT OF VERSA STEEL, INC.

VERSAS  
 F  
 E  
 D  
 C  
 B  
 A  
 REV

ISSUED FOR \_\_\_\_\_ DATE \_\_\_\_\_ BY \_\_\_\_\_

VERSAS  
 F  
 E  
 D  
 C  
 B  
 A  
 REV

DRAWN BY  
E. BAILIFF

DATE  
2013-12-23

CHECKED BY

APPROVED BY

MATERIAL  
6061-T6 ALUMINUM

FINISH  
BARE

SHEET TITLE  
HATCH ASSEMBLY-NO GAS SPRING, 24 X 24

PART NUMBER  
VSH-150-A-24-24-S-NS

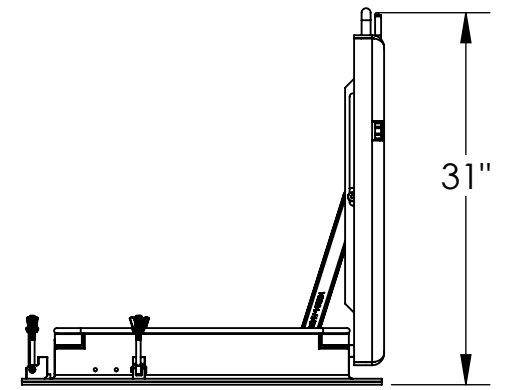
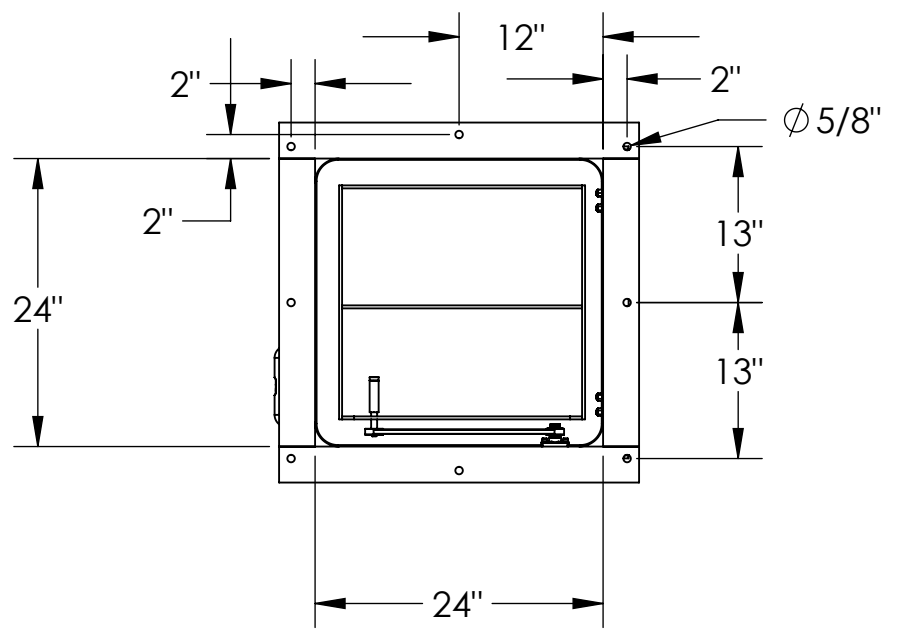
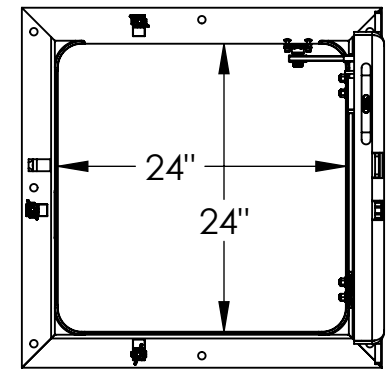
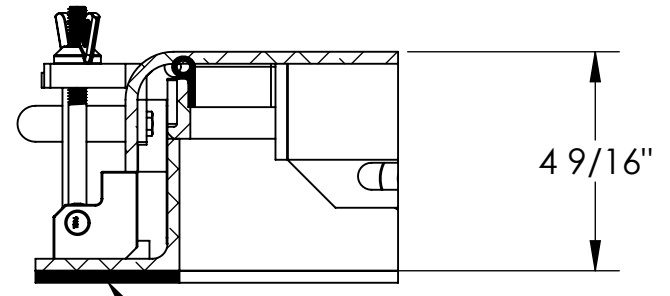
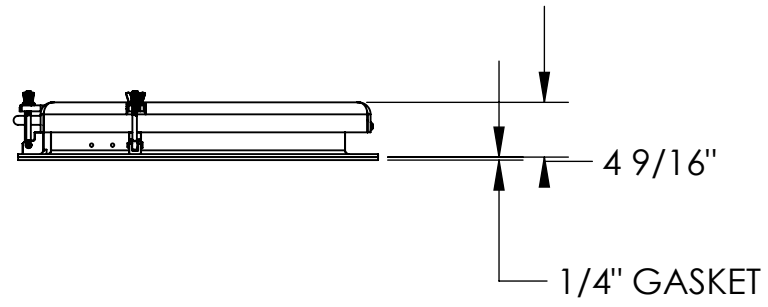
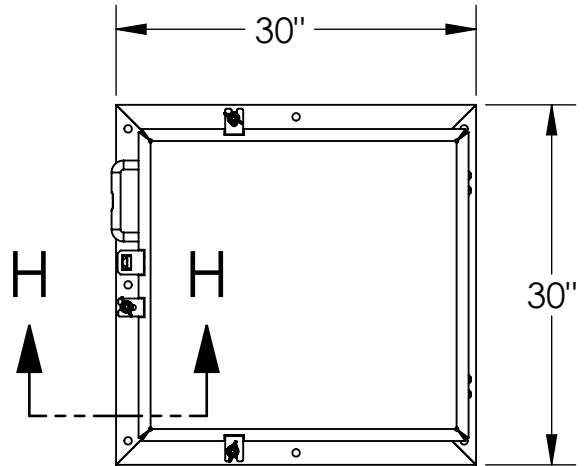
SUPPLIER  
FABRICATED PART

SCALE  
1:16

DRAWING NO.  
VSH-150-A-24-24-S-NS-APPF

REVISION NO.  
C

PART NUMBER: VSH-150-A-24-24-S-NS



SECTION H-H  
SCALE 1 : 4

NOTES:  
 PN: VSH-150-A-24-24-S-NS  
 DESC: HATCH ASSEMBLY-NO GAS SPRING, 24 X 24  
 MATRL: 6061-T6 ALUMINUM  
 EST. WT: 53.9  
 FINISH: BARE  
 NOTE: -  
 CAD FILE: VSH-150-A-24-24-S-NS-APPROVAL

THIS DOCUMENT CONTAINS PROPRIETARY, TRADE SECRET INFORMATION THAT IS THE PROPERTY OF VERSA STEEL, INC. THE INFORMATION CONTAINED IN THIS DOCUMENT, INCLUDING THE PRINCIPLE OF DESIGN, MAY NOT BE USED OR COPIED, IN WHOLE OR IN PART, WITHOUT THE EXPRESS WRITTEN CONSENT OF VERSA STEEL, INC.

MATERIAL	6061-T6 ALUMINUM		
FINISH	BARE		
SHEET TITLE	HATCH ASSEMBLY-NO GAS SPRING, 24 X 24		
PART NUMBER	VSH-150-A-24-24-S-NS		
SUPPLIER	FABRICATED PART		
SCALE	1:16		
DRAWING NO.	VSH-150-A-24-24-S-NS-APPROVAL		
REVISION NO.	C		
SHEET NO.	3 OF 3		
REV	A	ISSUED FOR	BY
G			
F			
E			
D			
C			
B			

VERSA STEEL, INC.  
 1618 NE FIRST AVENUE  
 PORTLAND, OREGON 97232  
 (503)287-9822  
 FAX (503)-287-7483

DRAWN BY  
 E. BAILIFF  
 DATE  
 2013-12-23  
 CHECKED BY

APPROVED BY

PART NUMBER  
 VSH-150-A-24-24-S-NS  
 SUPPLIER  
 FABRICATED PART  
 SCALE  
 1:16  
 DRAWING NO.  
 VSH-150-A-24-24-S-NS-APPROVAL  
 REVISION NO.  
 C