

GENERAL NOTES

DESIGN SPECIFICATIONS

ALL MATERIALS AND WORKMANSHIP SHALL BE IN ACCORDANCE WITH THE REQUIREMENTS OF THE CITY OF SEATTLE STANDARD SPECIFICATIONS FOR ROAD, BRIDGE, AND MUNICIPAL CONSTRUCTION DATED 2011.

SOUND TRANSIT DESIGN CRITERIA MANUAL, JULY 2012.

AASHTO LRFD BRIDGE DESIGN SPECIFICATION 5TH EDITION, 2010

AASHTO GUIDE SPECIFICATIONS FOR LRFD SEISMIC BRIDGE DESIGN 1ST EDITION, 2009.

CITY OF SEATTLE STANDARD SPECIFICATIONS FOR ROAD, BRIDGE, AND MUNICIPAL CONSTRUCTION, 2011.

ANSI/AASHTO/AWS "BRIDGE WELDING CODE, D1.5 "LATEST EDITION."

MATERIALS

ALL STRUCTURAL STEEL SHALL CONFORM TO AASHTO DESIGNATION M270-50W UNLESS NOTED ON THE DRAWINGS.

ALL BOLTS SHALL BE 1" ϕ M164 TYPE 3 WITH F436 TYPE 3 H.S. WASHERS PER STANDARD SPECIFICATIONS UNLESS NOTED ON DWGS.

HEADED STUDS SHALL CONFORM TO ANSI DESIGNATION M169. (FIELD INSTALLED)

FCM NOTED ON DRAWINGS DENOTES FRACTURE CRITICAL IMPACT TEST REQUIREMENTS TEMPATURE ZONE 2 (25 FT/LBS @ 40° F H.FREQ).

WELDING

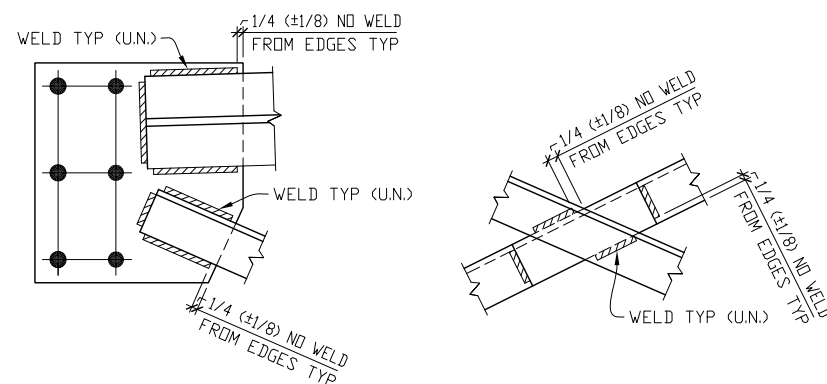
ALL WELDING SHALL BE IN ACCORDANCE WITH AWS D1.5 (LATEST EDITION) AMERICAN WELDING SOCIETY BRIDGE WELDING CODE.

TESTING

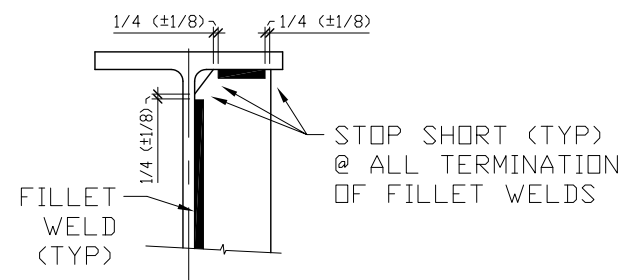
ALL WELDS SHALL BE TESTED PER THE STATE STANDARD SPECIFICATIONS SUB-SECTION 6-03.3(25)A (WELDING INSPECTION) AND ANSI/AASHTO/AWS D1.5 (BRIDGE WELDING CODE)

CLEANING AND PAINTING

ALL STRUCTURAL STEEL SHALL BE CLEANED & BLASTED IN ACCORDANCE WITH SSPC-SP6.



TYPICAL FILLET WELD
CROSSFRAME TERMINATION DETAIL



TYPICAL FILLET WELD
TERMINATION DETAIL

FOR APPROVAL
3/31/2014

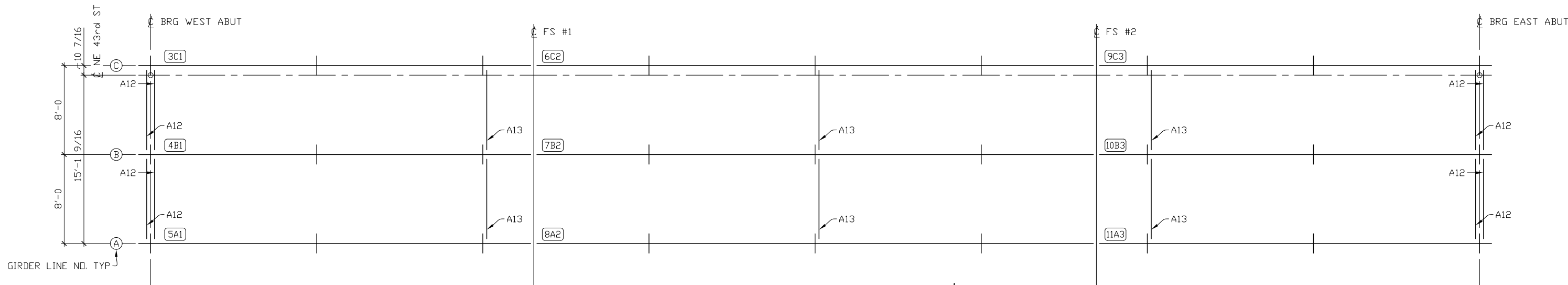
REV	DISTRIBUTION					DATE
	Q.C.	SHOP	PURCH	Approval	FINAL	

Material _____ Except as Noted
 Electrodes _____
 Connectors _____ Open Holes _____ Except as Noted
 End and Edge Distance _____ Except as Noted
 Spacing Not Shown _____
 Paint _____

Fought & Company, Inc.
STEEL FABRICATION
 14255 S.W. 72nd AVE. 639-3141 TIGARD, OREGON

SOUND TRANSIT
 N125 TBM TUNNELS UWS TO MLP
 CITY OF SEATTLE, WA

DRAWN BY EDS	CHECKED BY DLT	GENERAL NOTES
REFERENCES		DWG NO GN1
REV		REVISION
DESCRIPTION		JOB NO 4085
DATE		BY
REVISIONS		



FRAMING PLAN

ALL STEEL SHALL BE ERECTED WITH THE SHIPPING MARK IN THE SAME RELATIVE POSITION AS SHOWN ON THE FRAMING PLAN

FOR APPROVAL
3/31/2014

FIELD BOLT CONNECTION LIST

ITEM	TOTAL NO. PCS.	DIAMETER	THICKNESS OF MATERIAL CONNECTED		LENGTH UNDER HEAD	WASHER	NUT	SPEC.	LOCATION	
1	684	1"	1/2"	1"	1/2"	3 1/2"	1 - HSW	1 - HHN	M164 TYPE 3 BOLT	FIELD SPLICE PLATES AT WEBS
2	288	1"	1"	2"	1"	5 1/2"	1 - HSW	1 - HHN	M164 TYPE 3 BOLT	TOP FLG FIELD SPLICE PLATES
3	528	1"	1"	2"	1"	5 1/2"	1 - HSW	1 - HHN	M164 TYPE 3 BOLT	BTM FLG FIELD SPLICE PLATES
4										
5										
6	80	1"	1"	3/8"	3/8"	3 1/4"	1 - HSW	1 - HHN	M164 TYPE 3 BOLT	BRG DIAPHRAGMS TO BRG STIFF
7	144	1"	1"	1"	1"	3 1/2"	1 - HSW	1 - HHN	M164 TYPE 3 BOLT	INT DIAPHRAGMS TO STIFF
8										

FIELD BOLT SUMMARY (EXACT COUNT)

ITEM	TOTAL NO. PCS.	DIAMETER	SPEC.	BOLT LENGTH	ACTUAL COUNT	REMARKS
1	80	1"	M164 TYPE 3 BOLT	3 1/4"	80	
2	828	1"	M164 TYPE 3 BOLT	3 1/2"	828	
3	816	1"	M164 TYPE 3 BOLT	5 1/2"	816	
4	1724	HARD FLAT WASHERS FOR 1Ø BOLT			1724	FOR USE W/ TYPE 3 BOLTS
5	1724	HEAVY HEX NUTS FOR 1Ø BOLT			1724	FOR USE W/ TYPE 3 BOLTS
6						

FIELD STUD SUMMARY (EXACT COUNT)

ITEM	TOTAL NO. PCS.	DIAMETER	SPEC.	BOLT LENGTH	ACTUAL COUNT	REMARKS
1	675	1"	M169 HD STUD	7"	675	
2						

REV	DISTRIBUTION					DATE
	Q.C.	SHOP	PURCH	Approval	FINAL	

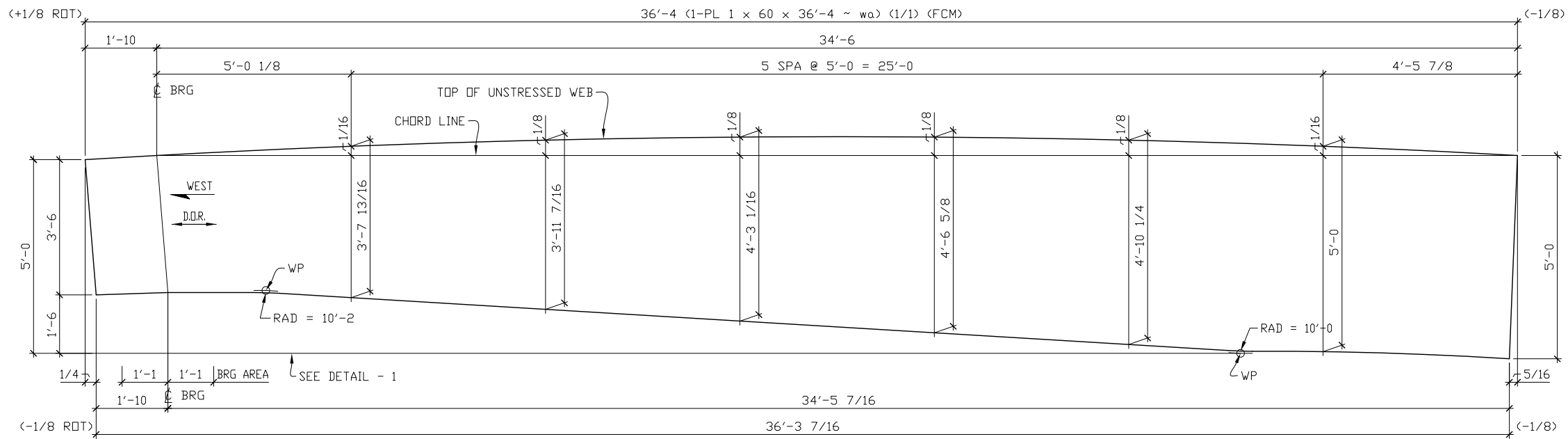
NOTES:
1) FIELD BOLT HEADS SHALL BE PLACED TOWARD OUTSIDE AND UNDERSIDE OF BRIDGE.

Material _____ Except as Noted
Electrodes _____
Connectors _____ Open Holes _____ Except as Noted
End and Edge Distance _____ Except as Noted
Spacing Not Shown _____
Paint _____

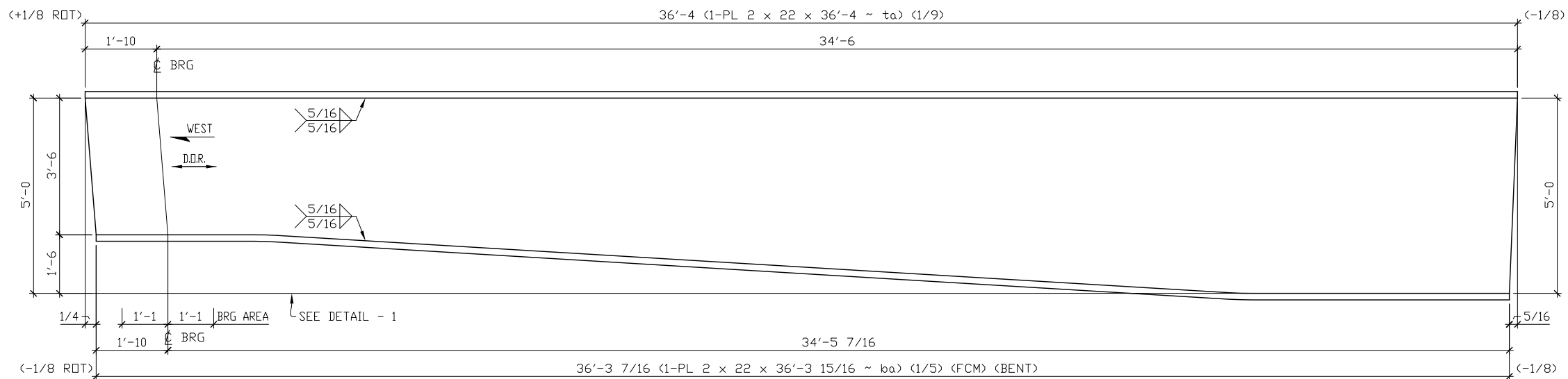
Fought & Company, Inc.
STEEL FABRICATION
14255 S.W. 72nd AVE. 639-3141 TIGARD, OREGON

SOUND TRANSIT
N125 TBM TUNNELS UWS TO MLP
CITY OF SEATTLE, WA

DRAWN BY EDS CHECKED BY DLT
REFERENCES: FRAMING PLAN
DWG NO: E1 REVISION: 4085
JOB NO:



CAMBER DIAGRAM

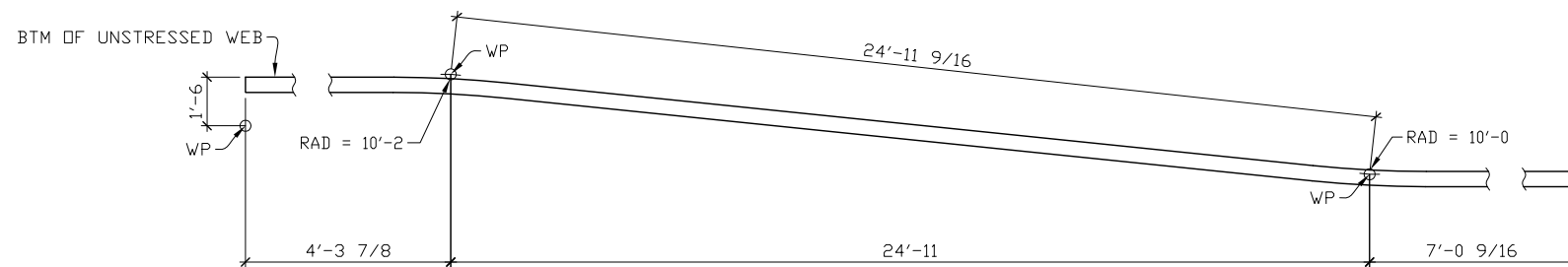


- ONE - GIRDER SUB-ASS'Y ~ 3C1
- ONE - GIRDER SUB-ASS'Y ~ 4B1
- ONE - GIRDER SUB-ASS'Y ~ 5A1

NOTES:
 1) FOR GENERAL NOTES SEE SHEET GN1.
 2) D.O.R. DENOTES DIRECTION OF ROLLING.
 3) FCM DENOTES FRACTURE CRITICAL TESTING REQ'D (25 FT/LBS @ 40°F)

FOR APPROVAL
3/31/2014

REV	DISTRIBUTION					DATE
	Q.C.	SHOP	PURCH	Approval	FINAL	



DETAIL - 1

Material M270-50W Except as Noted
 Electrodes _____
 Connectors _____ Open Holes _____ Except as Noted
 End and Edge Distance _____ Except as Noted
 Spacing Not Shown _____
 Paint _____

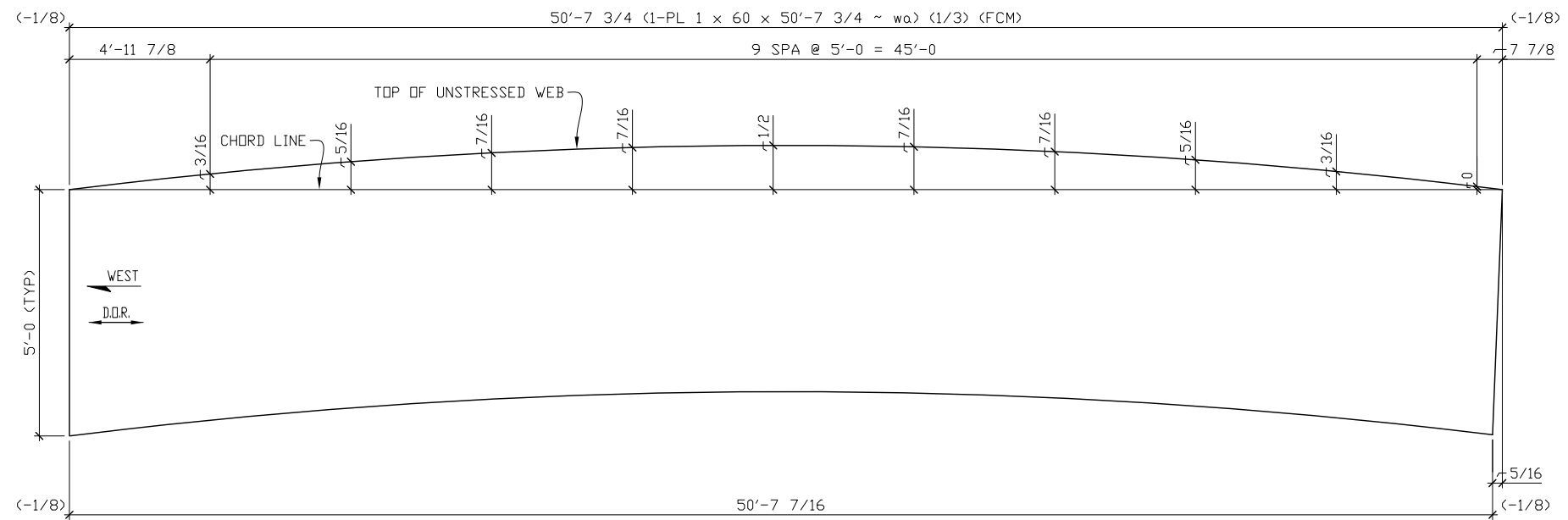
Fought & Company, Inc.
STEEL FABRICATION
 14255 S.W. 72nd AVE. 639-3141 TIGARD, OREGON

SOUND TRANSIT
N125 TBM TUNNELS UWS TO MLP
CITY OF SEATTLE, WA

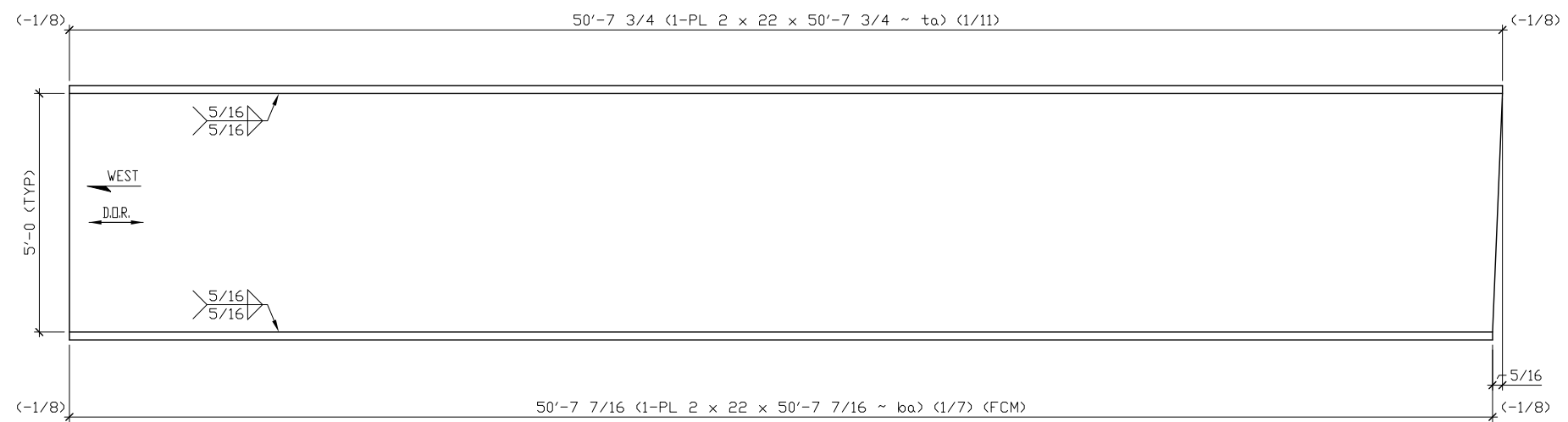
DRAWN BY EDS CHECKED BY DLT GIRDER SUB ASSEMBLY

REV	DESCRIPTION	DATE	BY

REFERENCES
 DWG NO C1 REVISION
 JOB NO 4085



CAMBER DIAGRAM



- ONE - GIRDER SUB-ASS'Y ~ 6C2
- ONE - GIRDER SUB-ASS'Y ~ 7B2
- ONE - GIRDER SUB-ASS'Y ~ 8A2

NOTES:
 1) FOR GENERAL NOTES SEE SHEET GNI.
 2) D.O.R. DENOTES DIRECTION OF ROLLING.
 3) FCM DENOTES FRACTURE CRITICAL TESTING REQ'D (25 FT/LBS @ 40°F)

FOR APPROVAL
3/31/2014

REV	DISTRIBUTION					DATE
	Q.C.	SHOP	PURCH	Approval	FINAL	

Material M270-50W Except as Noted
 Electrodes _____
 Connectors _____ Open Holes _____ Except as Noted
 End and Edge Distance _____ Except as Noted
 Spacing Not Shown _____
 Paint _____

REV DESCRIPTION DATE BY

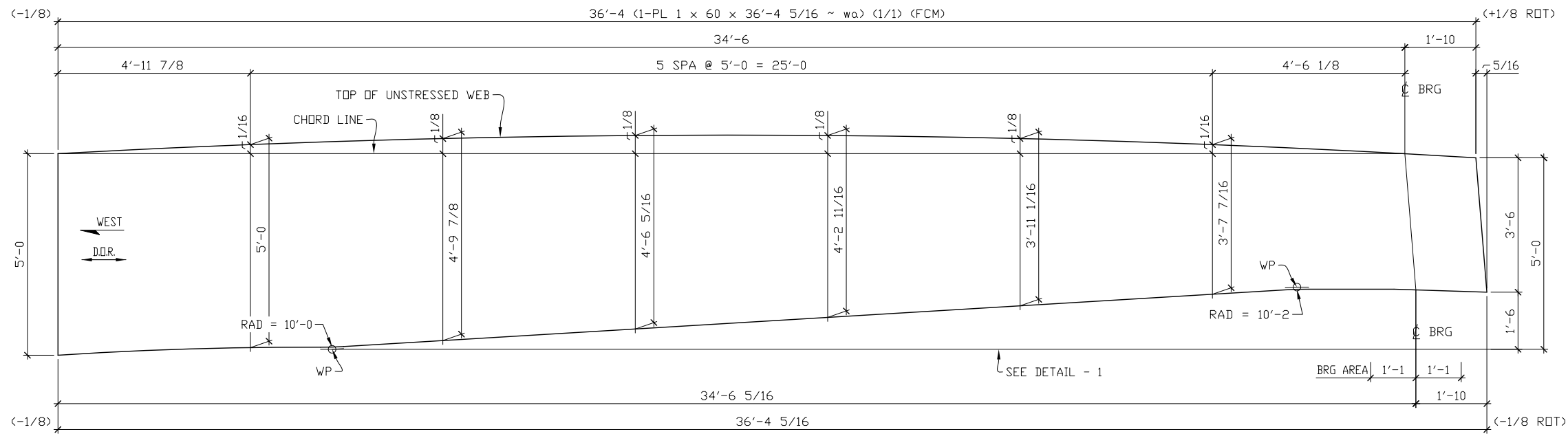
REVISIONS

Fought & Company, Inc.
STEEL FABRICATION
 14255 S.W. 72nd AVE. 639-3141 TIGARD, OREGON

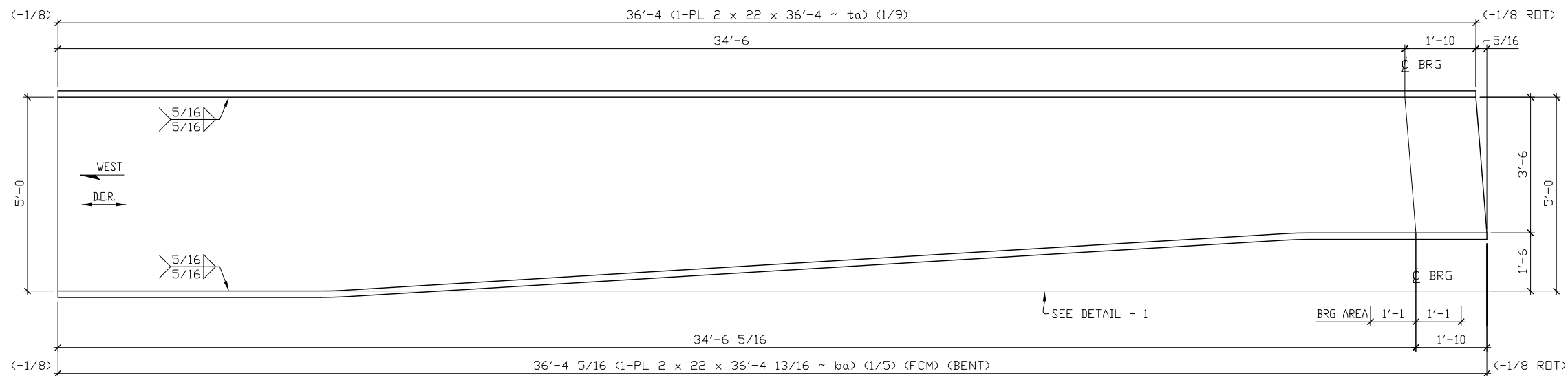
SOUND TRANSIT
 N125 TBM TUNNELS UWS TO MLP
 CITY OF SEATTLE, WA

DRAWN BY EDS CHECKED BY DLT GIRDER SUB ASSEMBLY

REFERENCES	DWG NO <u>C2</u>	REVISION
	JOB NO <u>4085</u>	



CAMBER DIAGRAM

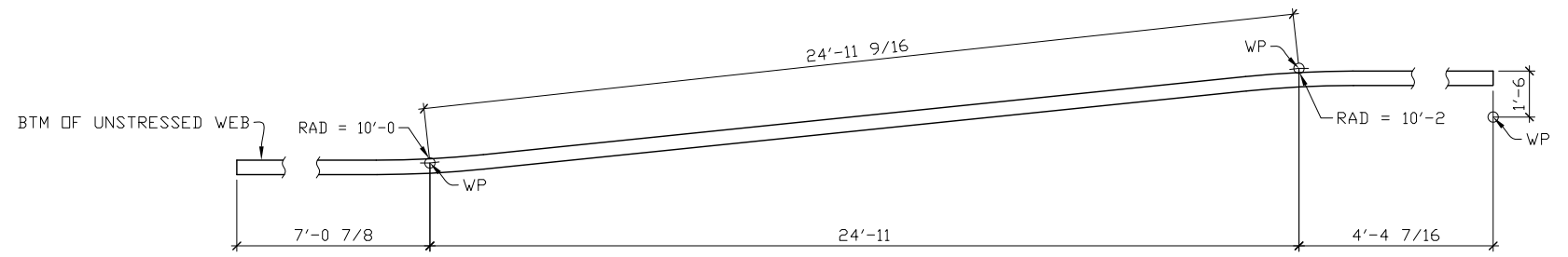


- ONE - GIRDER SUB-ASS'Y ~ 9C3
- ONE - GIRDER SUB-ASS'Y ~ 10B3
- ONE - GIRDER SUB-ASS'Y ~ 11A3

NOTES:
 1) FOR GENERAL NOTES SEE SHEET GN1.
 2) D.O.R. DENOTES DIRECTION OF ROLLING.
 3) FCM DENOTES FRACTURE CRITICAL TESTING REQ'D (25 FT/LBS @ 40°F)

FOR APPROVAL
 3/31/2014

REV	DISTRIBUTION					DATE
	Q.C.	SHOP	PURCH	Approval	FINAL	



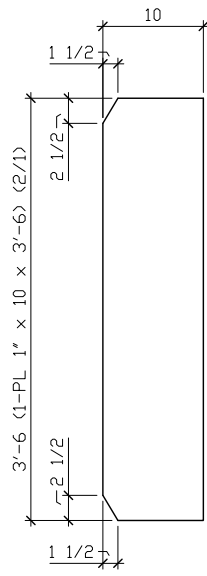
DETAIL - 1

Material	M270-50W	Except as Noted	
Electrodes			
Connectors	Open Holes	Except as Noted	
End and Edge Distance			
Spacing Not Shown			
Paint			
REV	DESCRIPTION	DATE	BY

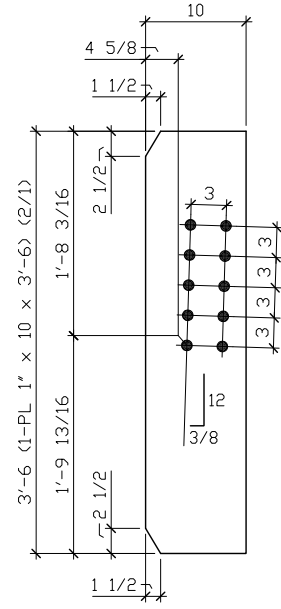
Fought & Company, Inc.
 STEEL FABRICATION
 14255 S.W. 72nd AVE. 639-3141 TIGARD, OREGON

SOUND TRANSIT
 N125 TBM TUNNELS UWS TO MLP
 CITY OF SEATTLE, WA

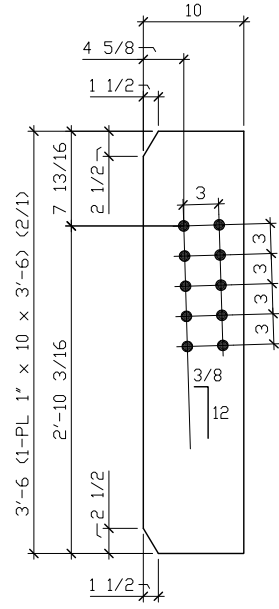
DRAWN BY	CHECKED BY	GIRDER SUB ASSEMBLY	
EDS	DLT		
REFERENCES		DWG NO	REVISION
		C3	
		JOB NO	4085



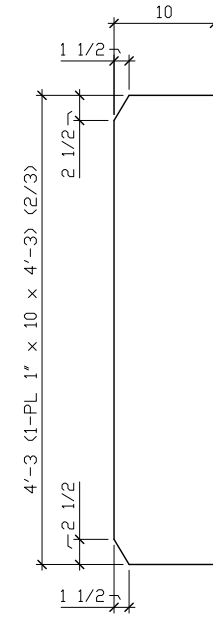
4 - STIFF ~ a1



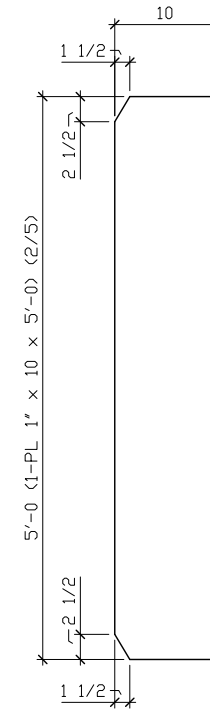
4 - STIFF ~ b1



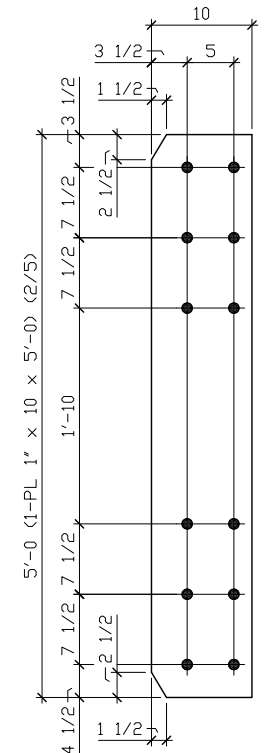
4 - STIFF ~ c1



12 - STIFF ~ d1



18 - STIFF ~ f1



12 - STIFF ~ h1

FOR APPROVAL
3/31/2014

REV	DISTRIBUTION					DATE
	Q.C.	SHOP	PURCH	Approval	FINAL	

Material	M270-50W	Except as Noted	
Electrodes	_____		
Connectors	_____	Open Holes 1 1/16" Except as Noted	
End and Edge Distance	_____	Except as Noted	
Spacing Not Shown	_____		
Paint	NONE		
REV	DESCRIPTION	DATE	BY

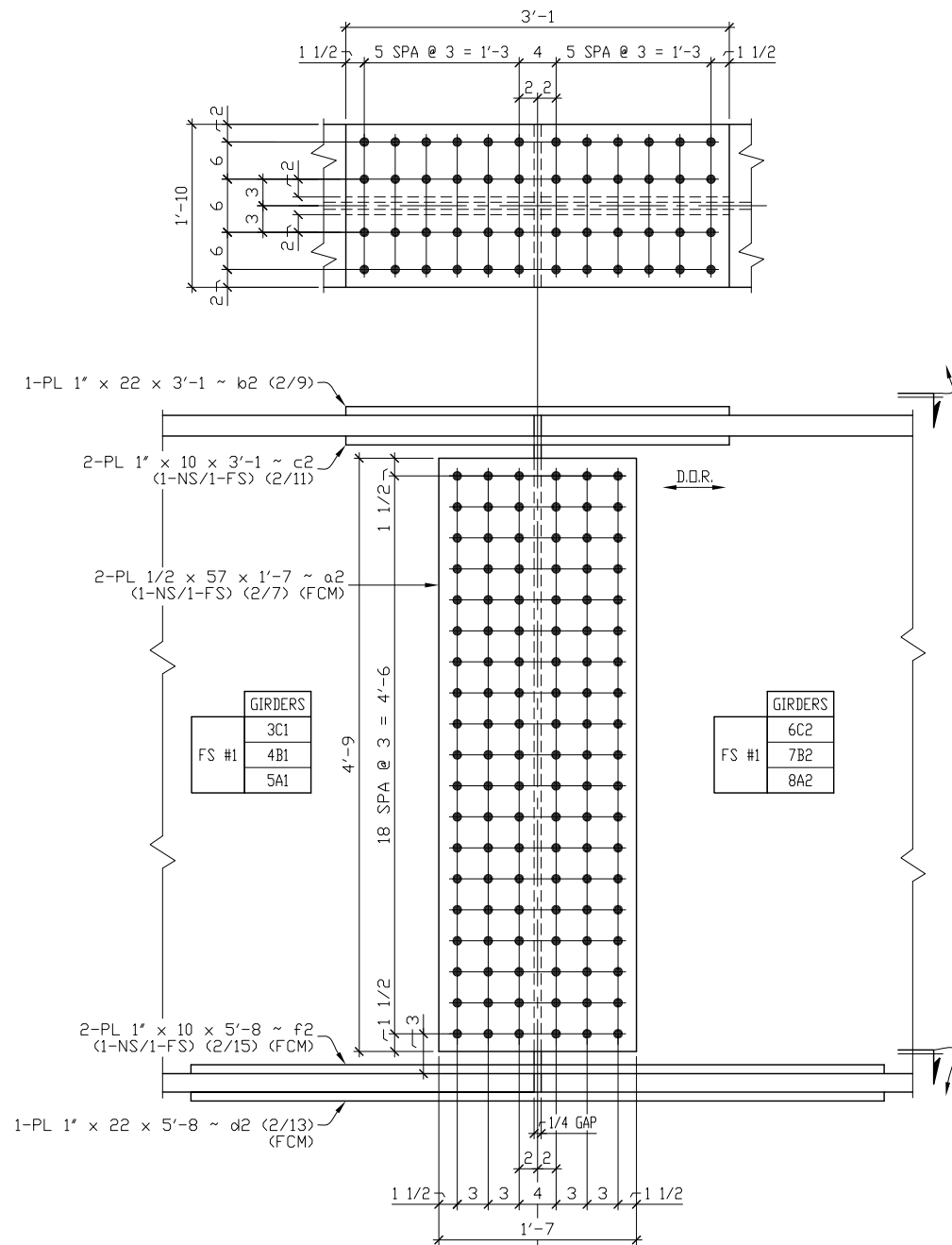
Fought & Company, Inc.
STEEL FABRICATION
14255 S.W. 72nd AVE. 639-3141 TIGARD, OREGON

SOUND TRANSIT
N125 TBM TUNNELS UWS TO MLP
CITY OF SEATTLE, WA

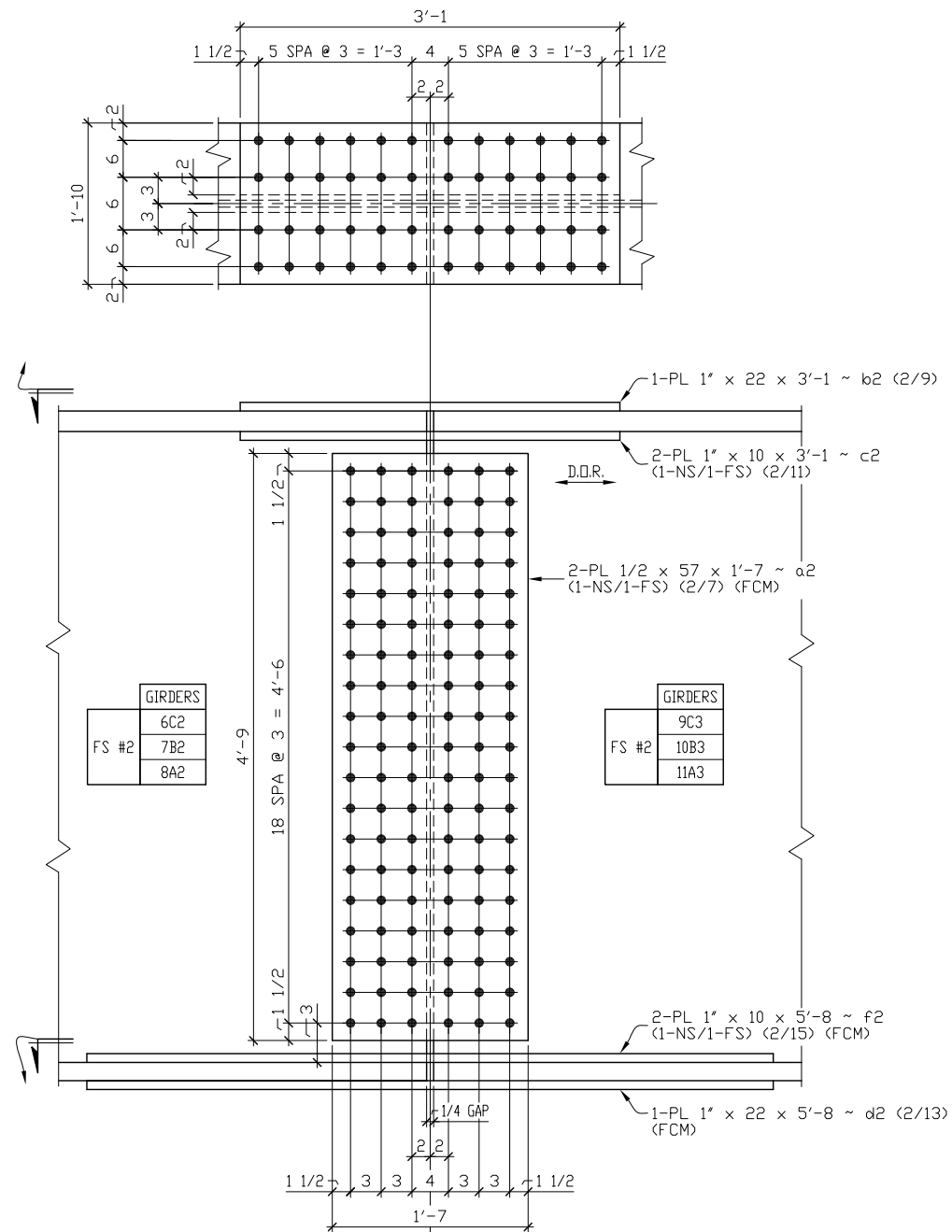
DRAWN BY EDS	CHECKED BY DLT	GIRDER STIFFENERS
REFERENCES	DWG NO 1	REVISION
	JOB NO 4085	

BILL OF MATERIAL

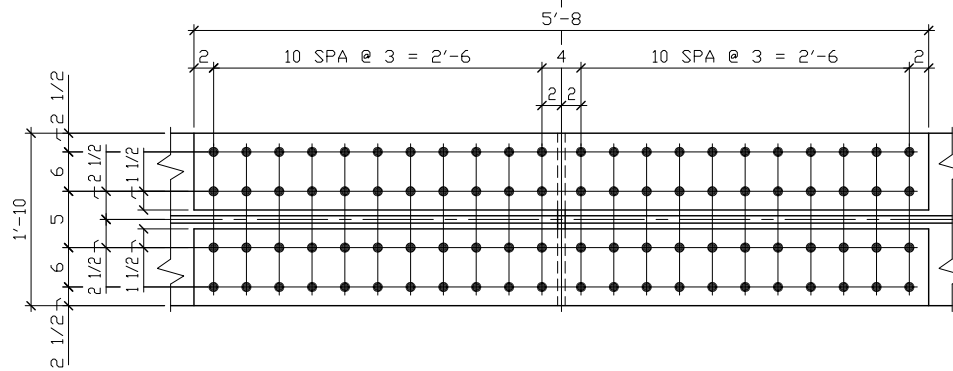
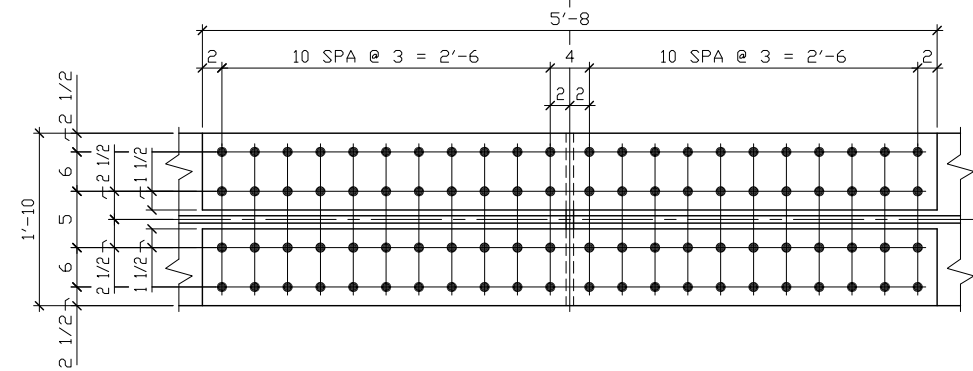
ITEM NO.	NO. TO SHIP	SHIP MARK	TOT. NO. PCS.	PC. MARK	SIZE	LENGTH	REMARKS	WEIGHT
					LINES A THRU C, FS #1 & #2			
2/7			12	a2	PL 1/2 x 57	1'-7	FCM	
2/9			6	b2	PL 1 x 22	3'-1		
2/11			12	c2	PL 1 x 10	3'-1		
2/13			6	d2	PL 1 x 22	5'-8	FCM	
2/15			12	f2	PL 1 x 10	5'-8	FCM	



LINES A THRU C, FIELD SPLICE #1



LINES A THRU C, FIELD SPLICE #2



NOTES

1. ALL MATERIAL TO BE M270-50W.
2. "FCM" FRACTURE CRITICAL IMPACT TESTING REQ'D (25 FT/LBS @ 40°F).
3. D.O.R. DENOTES DIRECTION OF ROLLING.

FOR APPROVAL
3/31/2014

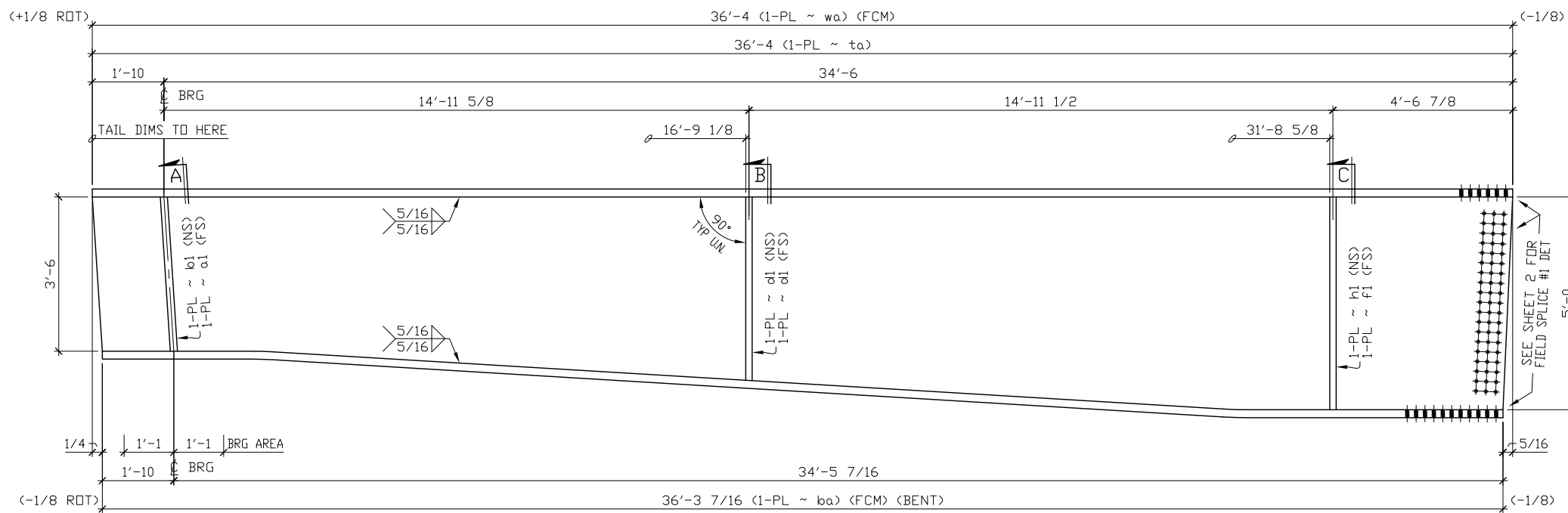
REV	DISTRIBUTION				DATE
	Q.C.	SHOP	PURCH	Approval	FINAL

Material M270-50W Except as Noted
 Electrodes _____
 Connectors _____ Open Holes 1 1/16 Except as Noted
 End and Edge Distance _____ Except as Noted
 Spacing Not Shown _____
 Paint NONE

Fought & Company, Inc.
STEEL FABRICATION
 14255 S.W. 72nd AVE. 639-3141 TIGARD, OREGON

SOUND TRANSIT
N125 TBM TUNNELS UWS TO MLP
CITY OF SEATTLE, WA

DRAWN BY EDS	CHECKED BY DLT	GIRDER FIELD SPLICES	
REFERENCES	DWG NO 2	REVISION	
	JOB NO	4085	



ONE - PLATE GIRDER ~ 3C1

BILL OF MATERIAL

ITEM NO.	NO. TO SHIP	SHIP MARK	TOT. NO. PCS.	PC. MARK	SIZE	LENGTH	REMARKS	WEIGHT
	1	3C1			PLATE GIRDER			
1/1			1	wa	PL 1 x 60	36'-4	FCM	
1/9			1	ta	PL 2 x 22	36'-4		
1/5			1	ba	PL 2 x 22	36'-3 15/16	FCM/BENT	
2/1			1	a1	PL 1 x 10	3'-6		
2/1			1	b1	PL 1 x 10	3'-6		
2/3			2	d1	PL 1 x 10	4'-3		
2/5			1	f1	PL 1 x 10	5'-0		
2/5			1	h1	PL 1 x 10	5'-0		

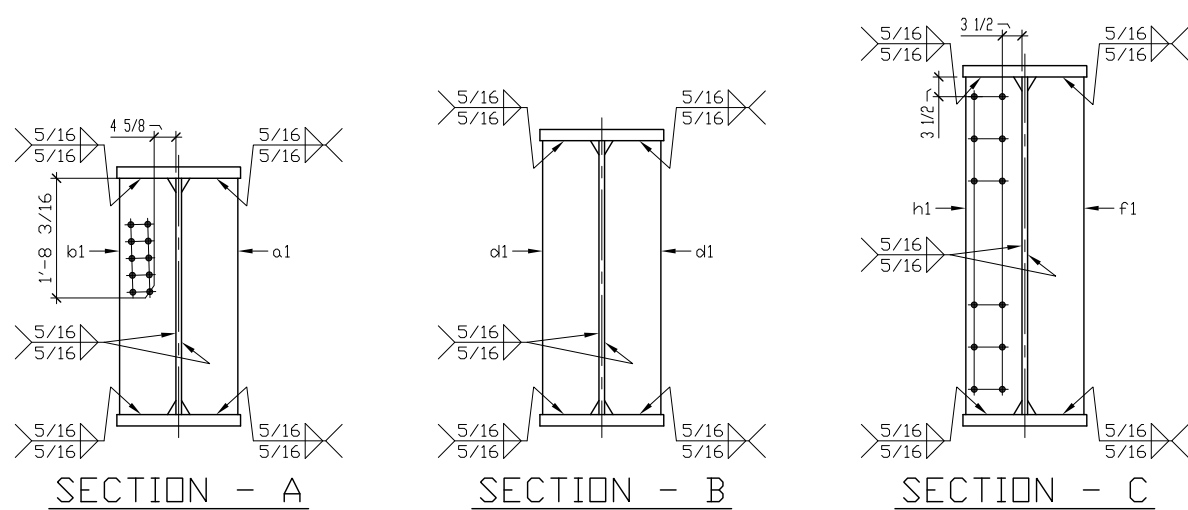
FOR APPROVAL

3/31/2014

REV	DISTRIBUTION					DATE
	Q.C.	SHOP	PURCH	Approval	FINAL	

NOTES:

- 1) FOR GENERAL NOTES SEE SHEET GN1.
- 2) FOR GIRDER ATTACHMENT DETAILS SEE SHEET 1.
- 3) FOR SPLICE PLATE DETAILS SEE SHEET 2.
- 4) FOR GIRDER SUB ASSEMBLY SEE SHEET C1.
- 5) FOR WELD TERMINATION DETAIL SEE SHEET GN1.

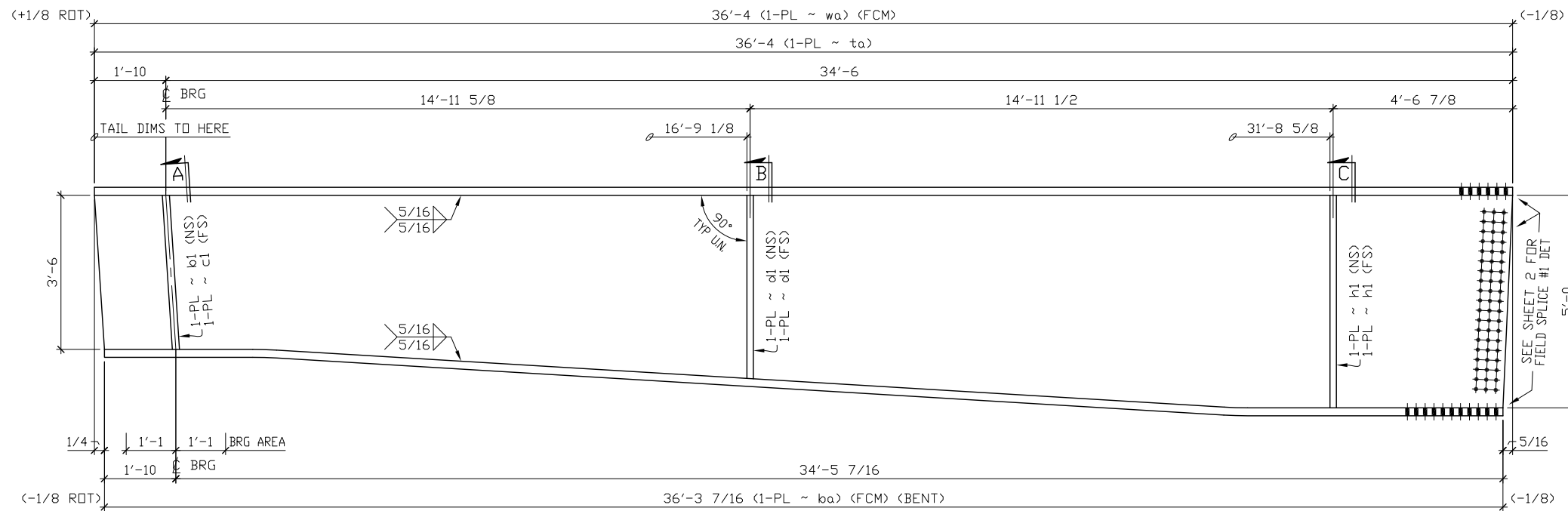


Material M270-50W Except as Noted
 Electrodes _____
 Connectors _____ Open Holes 1 1/16 Except as Noted
 End and Edge Distance _____ Except as Noted
 Spacing Not Shown _____
 Paint NONE

Fought & Company, Inc.
STEEL FABRICATION
 14255 S.W. 72nd AVE. 639-3141 TIGARD, OREGON

SOUND TRANSIT
 N125 TBM TUNNELS UWS TO MLP
 CITY OF SEATTLE, WA

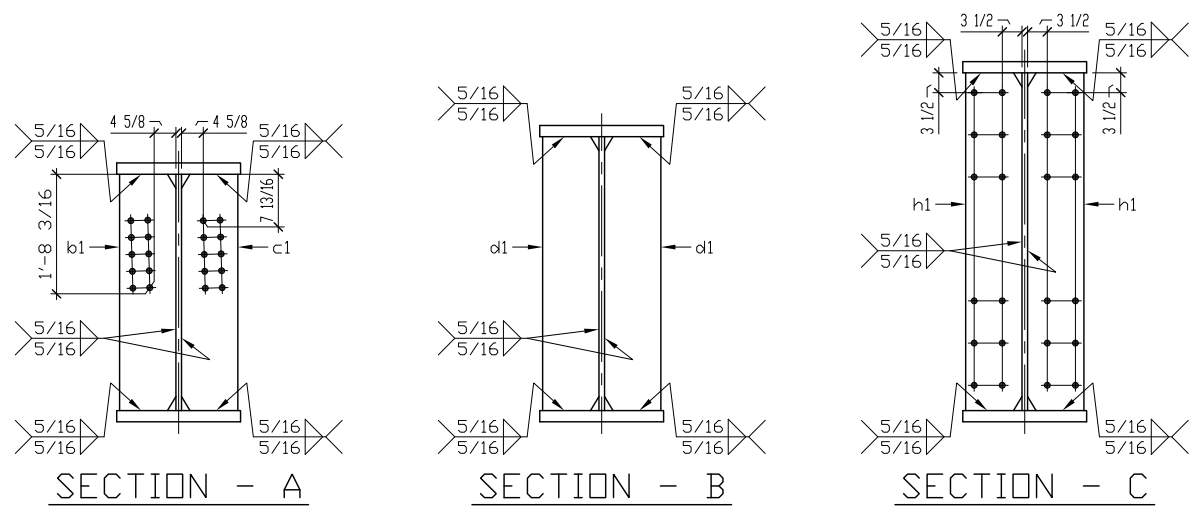
DRAWN BY	CHECKED BY	PLATE GIRDER
EDS	DLT	
REV	DESCRIPTION	DATE
DWG NO	REVISION	
3		
JOB NO		4085



ONE - PLATE GIRDER ~ 4B1

BILL OF MATERIAL										
ITEM NO.	NO. TO SHIP	SHIP MARK	TOT. NO. PCS.	PC. MARK	SIZE	LENGTH	REMARKS	WEIGHT		
	1	4B1			PLATE GIRDER					
1/1			1	wa	PL 1 x 60	36'-4	FCM			
1/9			1	ta	PL 2 x 22	36'-4				
1/5			1	ba	PL 2 x 22	36'-3 15/16	FCM/BENT			
2/1			1	b1	PL 1 x 10	3'-6				
2/1			1	c1	PL 1 x 10	3'-6				
2/3			2	d1	PL 1 x 10	4'-3				
2/5			2	h1	PL 1 x 10	5'-0				

FOR APPROVAL
3/31/2014



- NOTES:
 1) FOR GENERAL NOTES SEE SHEET GN1.
 2) FOR GIRDER ATTACHMENT DETAILS SEE SHEET 1.
 3) FOR SPLICE PLATE DETAILS SEE SHEET 2.
 4) FOR GIRDER SUB ASSEMBLY SEE SHEET C1.
 5) FOR WELD TERMINATION DETAIL SEE SHEET GN1.

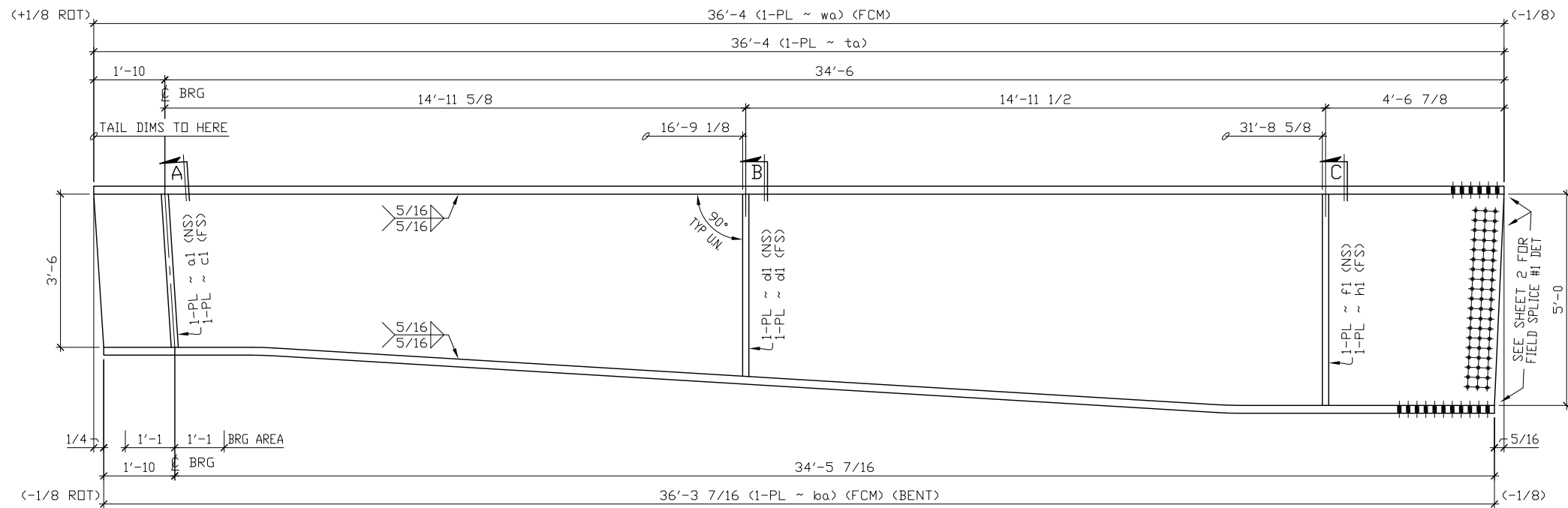
REV	DISTRIBUTION					DATE
	Q.C.	SHOP	PURCH	Approval	FINAL	

Material M270-50W Except as Noted
 Electrodes _____
 Connectors _____ Open Holes 1 1/16 Except as Noted
 End and Edge Distance _____ Except as Noted
 Spacing Not Shown _____
 Paint NONE

Fought & Company, Inc.
STEEL FABRICATION
 14255 S.W. 72nd AVE. 639-3141 TIGARD, OREGON

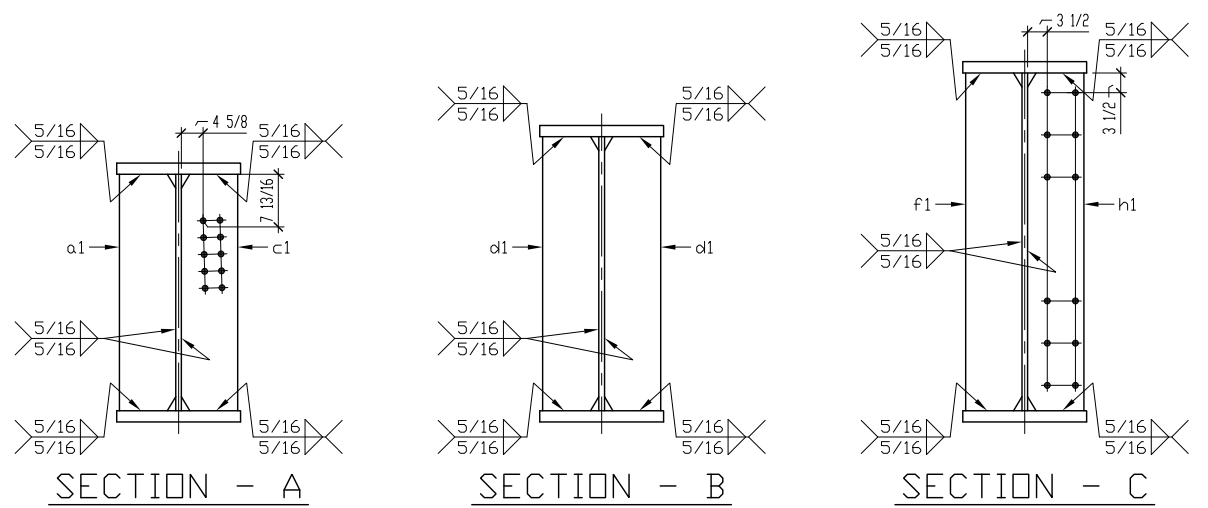
SOUND TRANSIT
 N125 TBM TUNNELS UWS TO MLP
 CITY OF SEATTLE, WA

DRAWN BY EDS	CHECKED BY DLT	PLATE GIRDER	DWG NO 4	REVISION
REFERENCES			DWG NO 4	REVISION
REV DESCRIPTION DATE BY			JOB NO	4085



ONE - PLATE GIRDER ~ 5A1

BILL OF MATERIAL										
ITEM NO.	NO. TO SHIP	SHIP MARK	TOT. NO. PCS.	PC. MARK	SIZE	LENGTH	REMARKS	WEIGHT		
	1	5A1			PLATE GIRDER					
1/1			1	wa	PL 1 x 60	36'-4	FCM			
1/9			1	ta	PL 2 x 22	36'-4				
1/5			1	ba	PL 2 x 22	36'-3 15/16	FCM/BENT			
2/1			1	a1	PL 1 x 10	3'-6				
2/1			1	c1	PL 1 x 10	3'-6				
2/3			2	d1	PL 1 x 10	4'-3				
2/5			1	f1	PL 1 x 10	5'-0				
2/5			1	h1	PL 1 x 10	5'-0				



- NOTES:
- 1) FOR GENERAL NOTES SEE SHEET GN1.
 - 2) FOR GIRDER ATTACHMENT DETAILS SEE SHEET 1.
 - 3) FOR SPLICE PLATE DETAILS SEE SHEET 2.
 - 4) FOR GIRDER SUB ASSEMBLY SEE SHEET C1.
 - 5) FOR WELD TERMINATION DETAIL SEE SHEET GN1.

FOR APPROVAL
3/31/2014

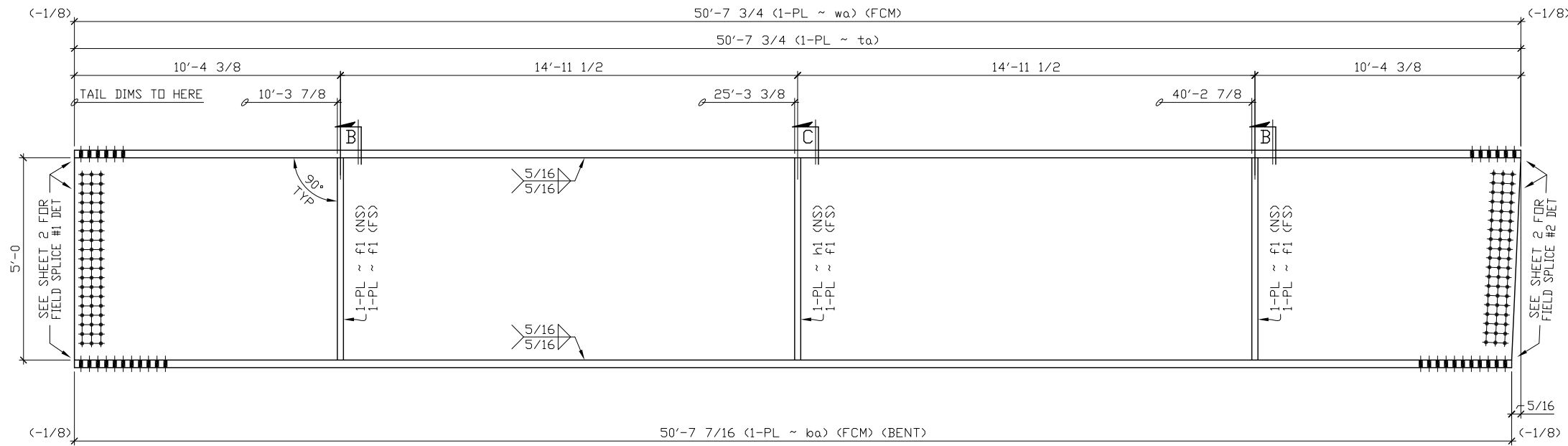
REV	DISTRIBUTION					DATE
	Q.C.	SHOP	PURCH	Approval	FINAL	

Material M270-50W Except as Noted
 Electrodes _____
 Connectors _____ Open Holes 1 1/16 Except as Noted
 End and Edge Distance _____ Except as Noted
 Spacing Not Shown _____
 Paint NONE

Fought & Company, Inc.
STEEL FABRICATION
 14255 S.W. 72nd AVE. 639-3141 TIGARD, OREGON

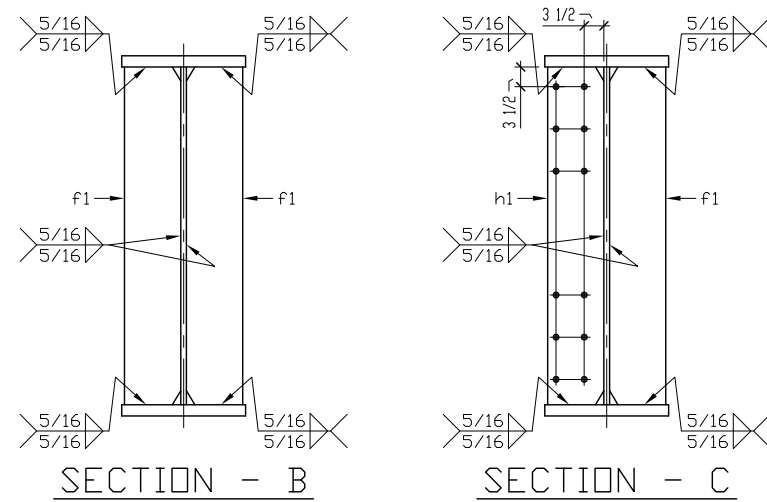
SOUND TRANSIT
 N125 TBM TUNNELS UWS TO MLP
 CITY OF SEATTLE, WA

DRAWN BY EDS	CHECKED BY DLT	PLATE GIRDER	DWG NO 5	REVISION
REFERENCES			DWG NO 5	REVISION
REV			DESCRIPTION	DATE BY
JOB NO 4085				



ONE - PLATE GIRDER ~ 6C2

BILL OF MATERIAL									
ITEM NO.	NO. TO SHIP	SHIP MARK	TOT. NO. PCS.	PC. MARK	SIZE	LENGTH	REMARKS	WEIGHT	
	1	6C2			PLATE GIRDER				
1/3			1	wa	PL 1 x 60	50'-7 3/4	FCM		
1/11			1	ta	PL 2 x 22	50'-7 3/4			
1/7			1	ba	PL 2 x 22	50'-7 7/16	FCM		
2/5			5	f1	PL 1 x 10	5'-0			
2/5			1	h1	PL 1 x 10	5'-0			



NOTES:

- 1) FOR GENERAL NOTES SEE SHEET GN1.
- 2) FOR GIRDER ATTACHMENT DETAILS SEE SHEET 1.
- 3) FOR SPLICE PLATE DETAILS SEE SHEET 2.
- 4) FOR GIRDER SUB ASSEMBLY SEE SHEET C2.
- 5) FOR WELD TERMINATION DETAIL SEE SHEET GN1.

FOR APPROVAL
3/31/2014

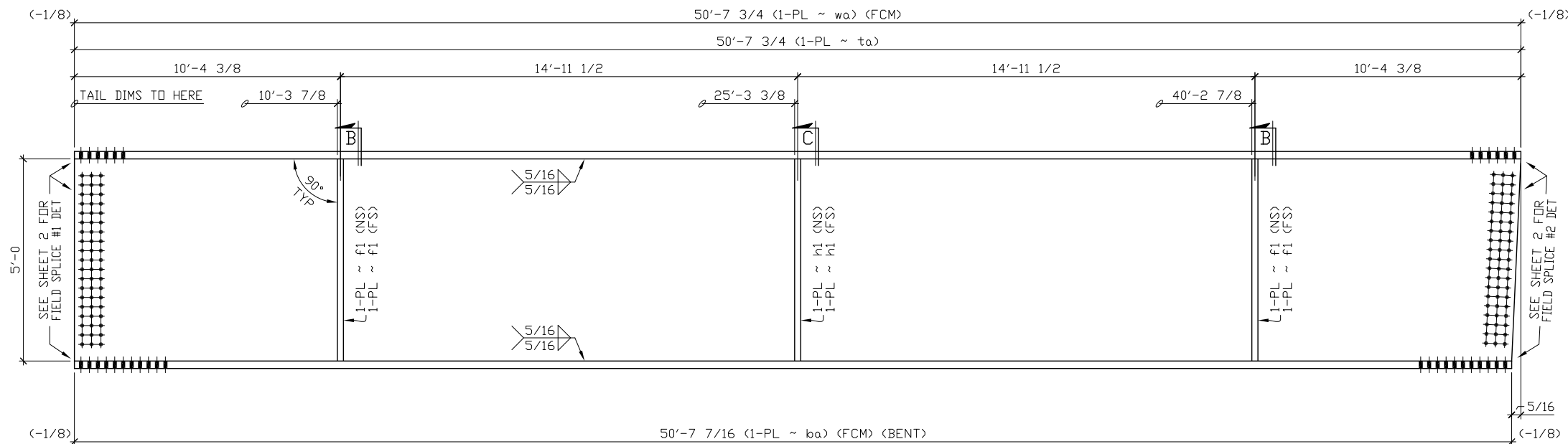
REV	DISTRIBUTION					DATE
	Q.C.	SHOP	PURCH	Approval	FINAL	

Material M270-50W Except as Noted
 Electrodes _____
 Connectors _____ Open Holes 1 1/16 Except as Noted
 End and Edge Distance _____ Except as Noted
 Spacing Not Shown _____
 Paint NONE


Fought & Company, Inc.
STEEL FABRICATION
 14255 S.W. 72nd AVE. 639-3141 TIGARD, OREGON

SOUND TRANSIT
N125 TBM TUNNELS UWS TO MLP
CITY OF SEATTLE, WA

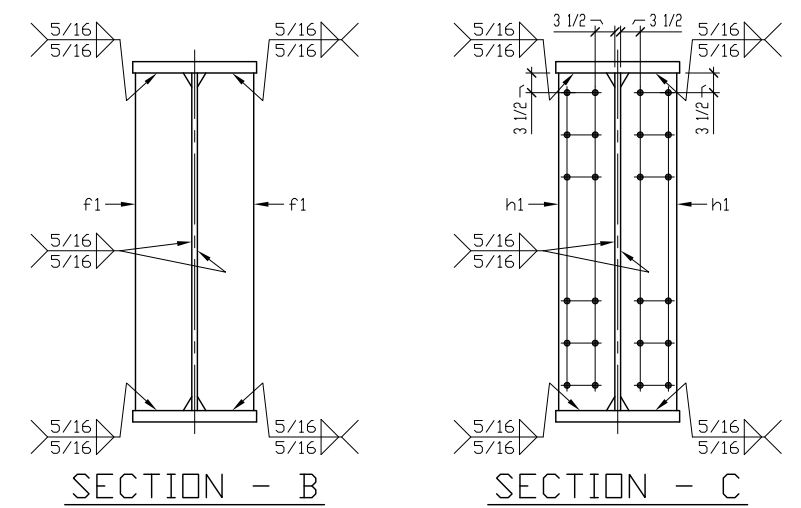
DRAWN BY EDS	CHECKED BY DLT	PLATE GIRDER	DWG NO 6	REVISION
REFERENCES			DWG NO 6	REVISION
REV			DESCRIPTION	DATE BY
REVISIONS				
JOB NO				4085



ONE - PLATE GIRDER ~ 7B2

BILL OF MATERIAL										
ITEM NO.	NO. TO SHIP	SHIP MARK	TOT. NO. PCS.	PC. MARK	SIZE	LENGTH	REMARKS	WEIGHT		
	1	7B2			PLATE GIRDER					
1/3			1	wa	PL 1 x 60	50'-7 3/4	FCM			
1/11			1	ta	PL 2 x 22	50'-7 3/4				
1/7			1	ba	PL 2 x 22	50'-7 7/16	FCM			
2/5			4	f1	PL 1 x 10	5'-0				
2/5			2	h1	PL 1 x 10	5'-0				

FOR APPROVAL
3/31/2014



- NOTES:
 1) FOR GENERAL NOTES SEE SHEET GN1.
 2) FOR GIRDER ATTACHMENT DETAILS SEE SHEET 1.
 3) FOR SPLICE PLATE DETAILS SEE SHEET 2.
 4) FOR GIRDER SUB ASSEMBLY SEE SHEET C2.
 5) FOR WELD TERMINATION DETAIL SEE SHEET GN1.

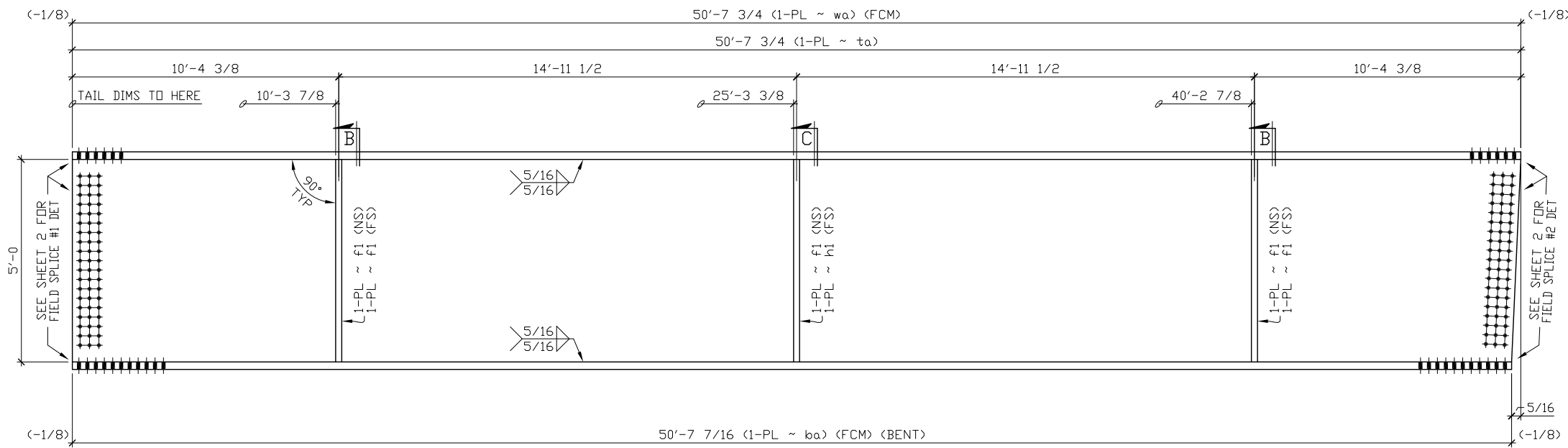
REV	DISTRIBUTION					DATE
	Q.C.	SHOP	PURCH	Approval	FINAL	

Material M270-50W Except as Noted
 Electrodes _____
 Connectors _____ Open Holes 1 1/16 Except as Noted
 End and Edge Distance _____ Except as Noted
 Spacing Not Shown _____
 Paint NONE


Fought & Company, Inc.
STEEL FABRICATION
 14255 S.W. 72nd AVE. 639-3141 TIGARD, OREGON

SOUND TRANSIT
 N125 TBM TUNNELS UWS TO MLP
 CITY OF SEATTLE, WA

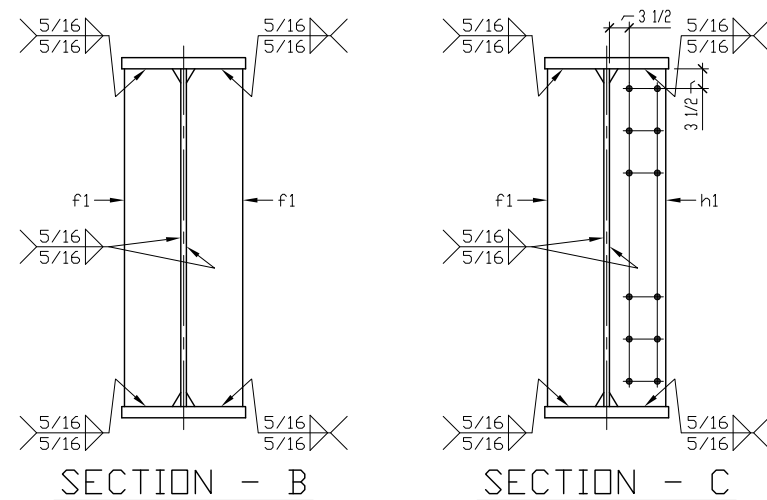
DRAWN BY EDS	CHECKED BY DLT	PLATE GIRDER
REFERENCES	DWG NO 7	REVISION
	JOB NO 4085	



ONE - PLATE GIRDER ~ 8A2

BILL OF MATERIAL									
ITEM NO.	NO. TO SHIP	SHIP MARK	TOT. NO. PCS.	PC. MARK	SIZE	LENGTH	REMARKS	WEIGHT	
	1	8A2			PLATE GIRDER				
1/3			1	wa	PL 1 x 60	50'-7 3/4	FCM		
1/11			1	ta	PL 2 x 22	50'-7 3/4			
1/7			1	ba	PL 2 x 22	50'-7 7/16	FCM		
2/5			5	f1	PL 1 x 10	5'-0			
2/5			1	h1	PL 1 x 10	5'-0			

FOR APPROVAL
3/31/2014



- NOTES:
 1) FOR GENERAL NOTES SEE SHEET GN1.
 2) FOR GIRDER ATTACHMENT DETAILS SEE SHEET 1.
 3) FOR SPLICE PLATE DETAILS SEE SHEET 2.
 4) FOR GIRDER SUB ASSEMBLY SEE SHEET C2.
 5) FOR WELD TERMINATION DETAIL SEE SHEET GN1.

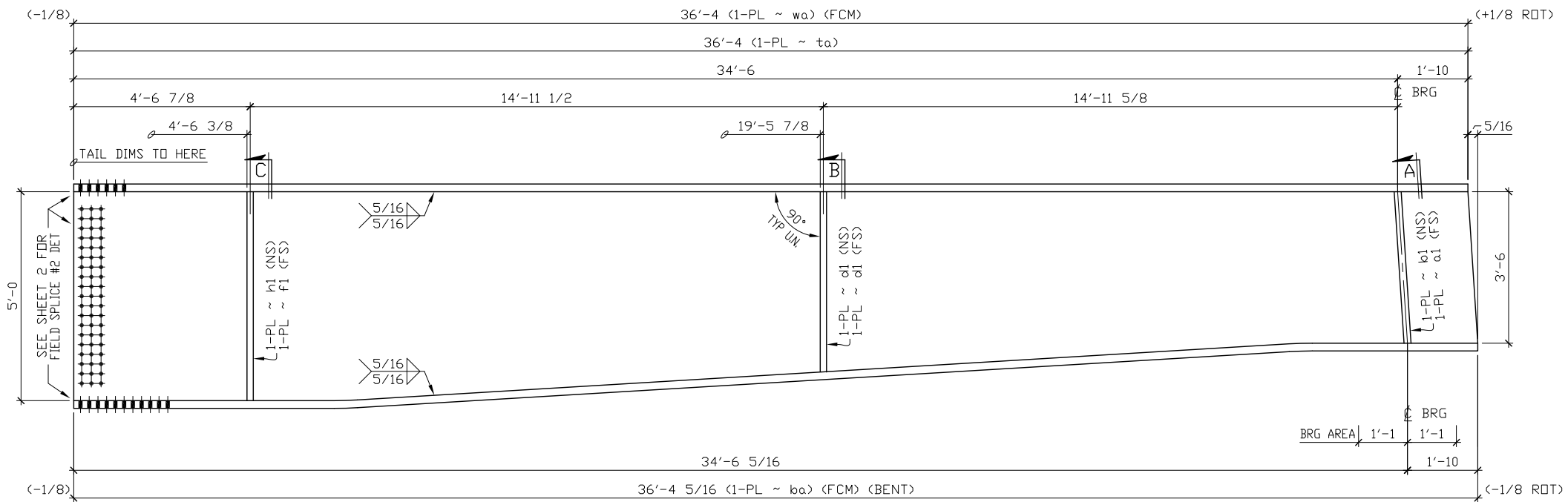
REV	DISTRIBUTION					DATE
	Q.C.	SHOP	PURCH	Approval	FINAL	

Material M270-50W Except as Noted
 Electrodes _____
 Connectors _____ Open Holes 1 1/16 Except as Noted
 End and Edge Distance _____ Except as Noted
 Spacing Not Shown _____
 Paint NONE


Fought & Company, Inc.
STEEL FABRICATION
 14255 S.W. 72nd AVE. 639-3141 TIGARD, OREGON

SOUND TRANSIT
 N125 TBM TUNNELS UWS TO MLP
 CITY OF SEATTLE, WA

DRAWN BY EDS	CHECKED BY DLT	PLATE GIRDER	DWG NO 8	REVISION
REFERENCES			DWG NO 8	REVISION
REV DESCRIPTION DATE BY			JOB NO 4085	



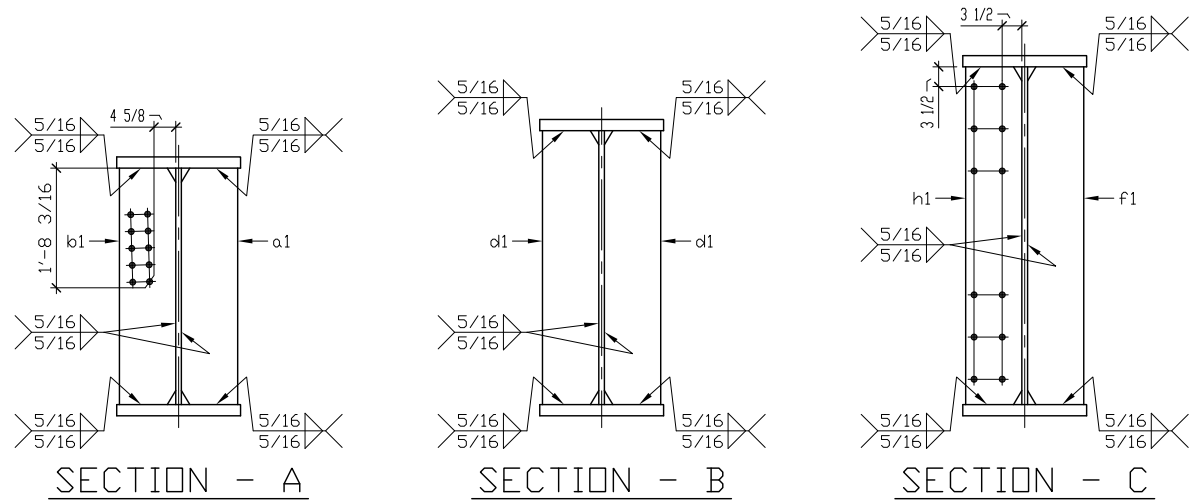
ONE - PLATE GIRDER ~ 9C3

BILL OF MATERIAL										
ITEM NO.	NO. TO SHIP	SHIP MARK	TOT. NO. PCS.	PC. MARK	SIZE	LENGTH	REMARKS	WEIGHT		
	1	9C3			PLATE GIRDER					
1/1			1	wa	PL 1 x 60	36'-4 5/16	FCM			
1/9			1	ta	PL 2 x 22	36'-4				
1/5			1	ba	PL 2 x 22	36'-4 13/16	FCM/BENT			
2/1			1	a1	PL 1 x 10	3'-6				
2/1			1	b1	PL 1 x 10	3'-6				
2/3			2	d1	PL 1 x 10	4'-3				
2/5			1	f1	PL 1 x 10	5'-0				
2/5			1	h1	PL 1 x 10	5'-0				

FOR APPROVAL
3/31/2014

REV	DISTRIBUTION					DATE
	Q.C.	SHOP	PURCH	Approval	FINAL	

- NOTES:
 1) FOR GENERAL NOTES SEE SHEET GN1.
 2) FOR GIRDER ATTACHMENT DETAILS SEE SHEET 1.
 3) FOR SPLICE PLATE DETAILS SEE SHEET 2.
 4) FOR GIRDER SUB ASSEMBLY SEE SHEET C3.
 5) FOR WELD TERMINATION DETAIL SEE SHEET GN1.



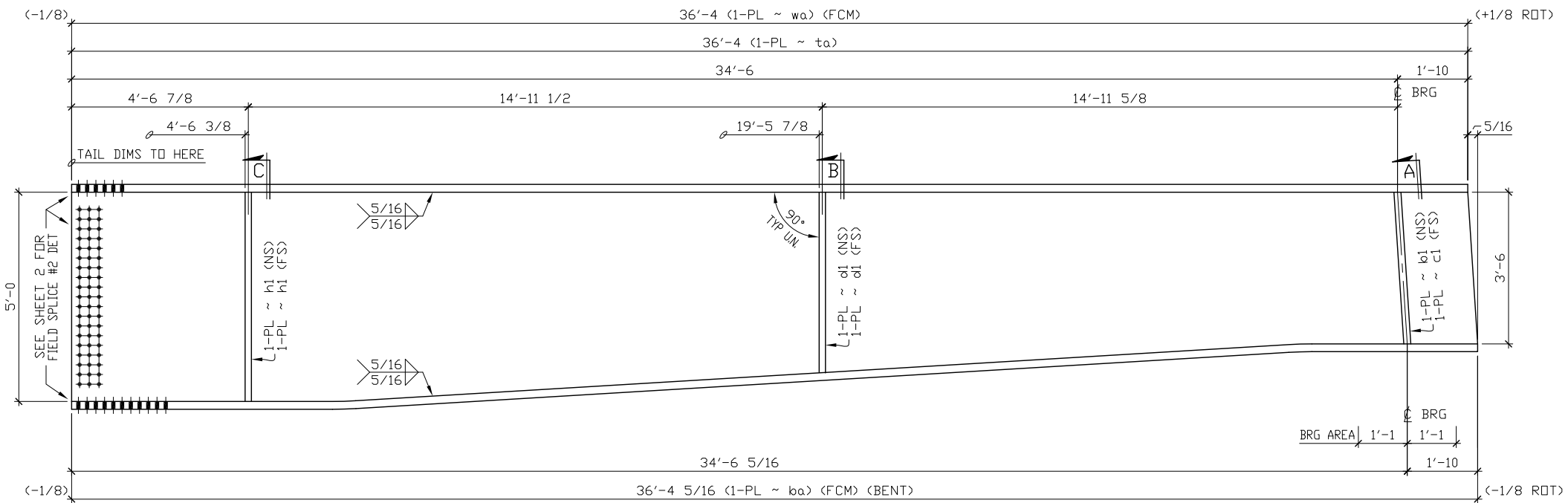
Material M270-50W Except as Noted
 Electrodes _____
 Connectors _____ Open Holes 1 1/16" Except as Noted
 End and Edge Distance _____ Except as Noted
 Spacing Not Shown _____
 Paint NONE

Fought & Company, Inc.
STEEL FABRICATION
 14255 S.W. 72nd AVE. 639-3141 TIGARD, OREGON

SOUND TRANSIT
 N125 TBM TUNNELS UWS TO MLP
 CITY OF SEATTLE, WA

DRAWN BY EDS CHECKED BY DLT PLATE GIRDER
 REFERENCES DWG NO. 9 REVISION 9
 JOB NO. 4085

REV	DESCRIPTION	DATE	BY



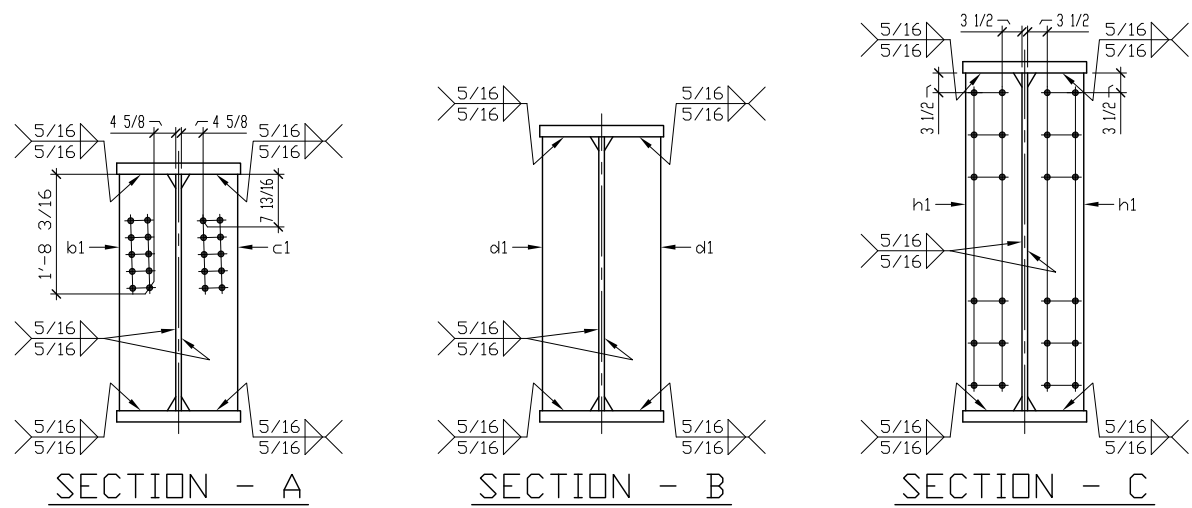
ONE - PLATE GIRDER ~ 10B3

BILL OF MATERIAL									
ITEM NO.	NO. TO SHIP	SHIP MARK	TOT. NO. PCS.	PC. MARK	SIZE	LENGTH	REMARKS	WEIGHT	
	1	10B3			PLATE GIRDER				
1/1			1	wa	PL 1 x 60	36'-4 5/16	FCM		
1/9			1	ta	PL 2 x 22	36'-4			
1/5			1	ba	PL 2 x 22	36'-4 13/16	FCM/BENT		
2/1			1	bl	PL 1 x 10	3'-6			
2/1			1	c1	PL 1 x 10	3'-6			
2/3			2	d1	PL 1 x 10	4'-3			
2/5			2	h1	PL 1 x 10	5'-0			

FOR APPROVAL
3/31/2014

REV	DISTRIBUTION					DATE
	Q.C.	SHOP	PURCH	Approval	FINAL	

- NOTES:
 1) FOR GENERAL NOTES SEE SHEET GN1.
 2) FOR GIRDER ATTACHMENT DETAILS SEE SHEET 1.
 3) FOR SPLICE PLATE DETAILS SEE SHEET 2.
 4) FOR GIRDER SUB ASSEMBLY SEE SHEET C3.
 5) FOR WELD TERMINATION DETAIL SEE SHEET GN1.



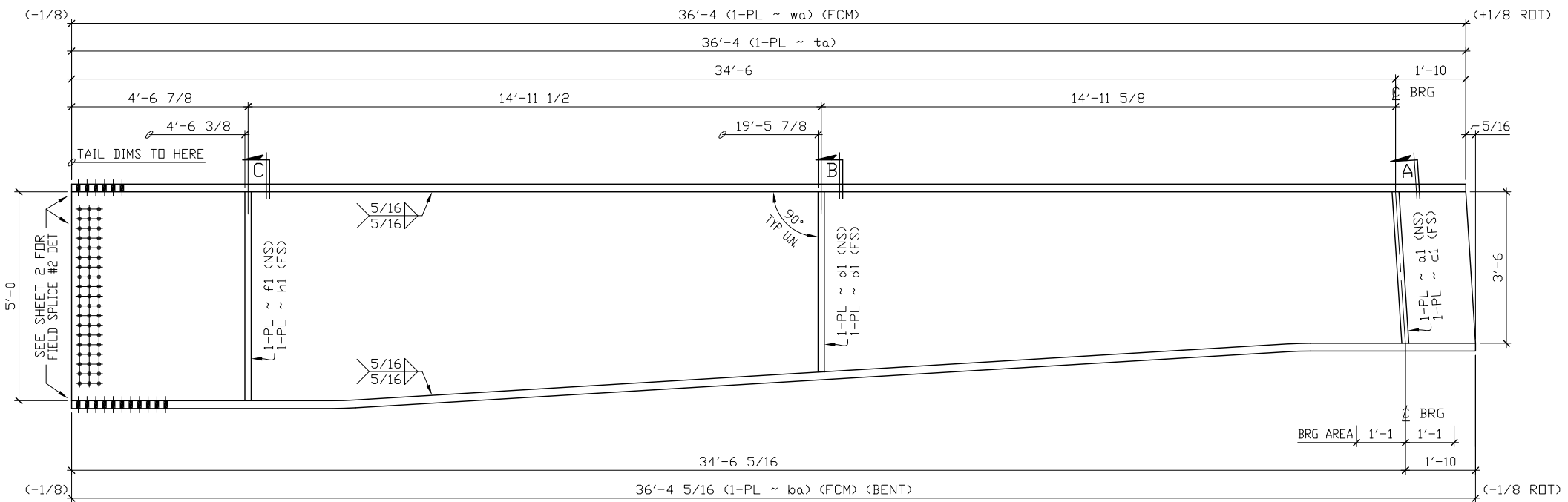
Material M270-50W Except as Noted
 Electrodes _____
 Connectors _____ Open Holes 1 1/16 Except as Noted
 End and Edge Distance _____ Except as Noted
 Spacing Not Shown _____
 Paint NONE


Fought & Company, Inc.
 STEEL FABRICATION
 14255 S.W. 72nd AVE. 639-3141 TIGARD, OREGON

SOUND TRANSIT
 N125 TBM TUNNELS UWS TO MLP
 CITY OF SEATTLE, WA

REV	DESCRIPTION	DATE	BY

DRAWN BY EDS	CHECKED BY DLT	PLATE GIRDER
REFERENCES	DWG NO 10	REVISION
	JOB NO	4085



ONE - PLATE GIRDER ~ 11A3

BILL OF MATERIAL

ITEM NO.	NO. TO SHIP	SHIP MARK	TOT. NO. PCS.	PC. MARK	SIZE	LENGTH	REMARKS	WEIGHT
	1	11A3			PLATE GIRDER			
1/1			1	wa	PL 1 x 60	36'-4 5/16	FCM	
1/9			1	ta	PL 2 x 22	36'-4		
1/5			1	ba	PL 2 x 22	36'-4 13/16	FCM/BENT	
2/1			1	a1	PL 1 x 10	3'-6		
2/1			1	c1	PL 1 x 10	3'-6		
2/3			2	d1	PL 1 x 10	4'-3		
2/5			1	f1	PL 1 x 10	5'-0		
2/5			1	h1	PL 1 x 10	5'-0		

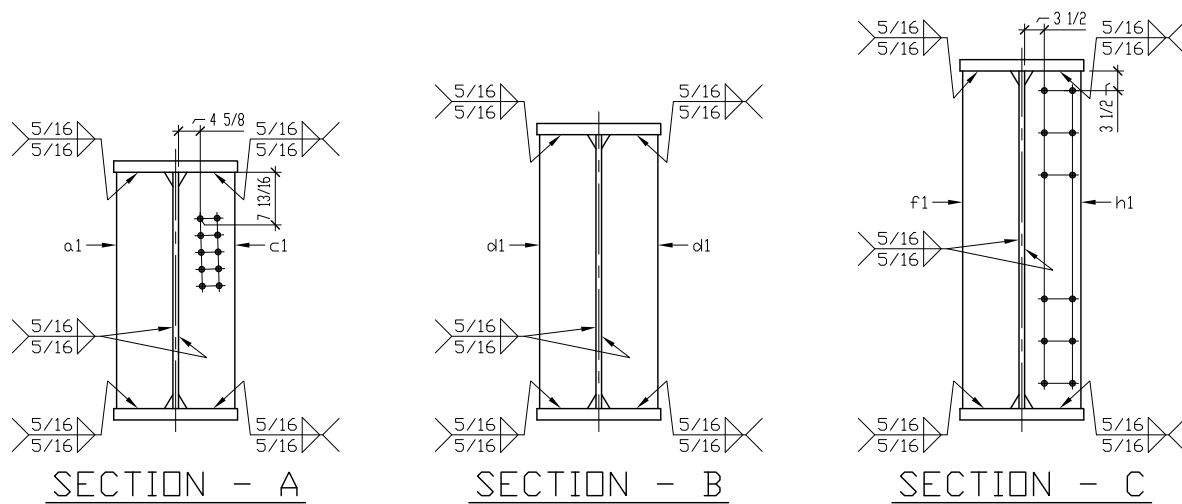
FOR APPROVAL

3/31/2014

REV	DISTRIBUTION					DATE
	Q.C.	SHOP	PURCH	Approval	FINAL	

NOTES:

- 1) FOR GENERAL NOTES SEE SHEET GN1.
- 2) FOR GIRDER ATTACHMENT DETAILS SEE SHEET 1.
- 3) FOR SPLICE PLATE DETAILS SEE SHEET 2.
- 4) FOR GIRDER SUB ASSEMBLY SEE SHEET C3.
- 5) FOR WELD TERMINATION DETAIL SEE SHEET GN1.

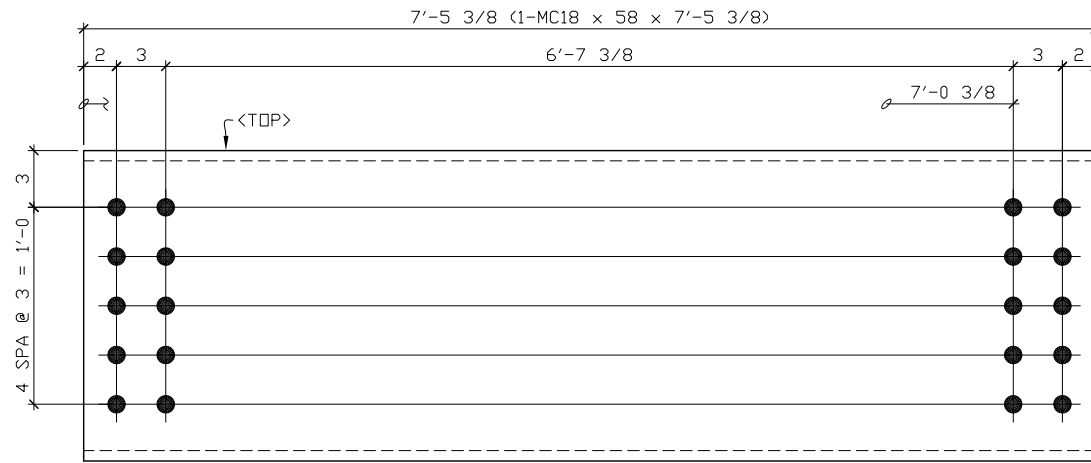


Material M270-50W Except as Noted
 Electrodes _____
 Connectors _____ Open Holes 1 1/16 Except as Noted
 End and Edge Distance _____ Except as Noted
 Spacing Not Shown _____
 Paint NONE

Fought & Company, Inc.
 STEEL FABRICATION
 14255 S.W. 72nd AVE. 639-3141 TIGARD, OREGON

SOUND TRANSIT
 N125 TBM TUNNELS UWS TO MLP
 CITY OF SEATTLE, WA

DRAWN BY EDS	CHECKED BY DLT	PLATE GIRDER	DWG NO 11	REVISION
REFERENCES			DWG NO	REVISION
REV			11	
DESCRIPTION			4085	
DATE				
BY				
REVISIONS				



8 - BRG DIAPHRAGMS ~ A12

BILL OF MATERIAL

ITEM NO.	NO. TO SHIP	SHIP MARK	TOT. NO. PCS.	PC. MARK	SIZE	LENGTH	REMARKS	WEIGHT
3/1	8	A12	8		BRG DIAPHRAGMS			
					MC 18 x 58	7'-5 3/8		

FOR APPROVAL
3/31/2014

NOTES:
1) FOR GENERAL NOTES SEE SHEET GN1.

REV	DISTRIBUTION					DATE
	Q.C.	SHOP	PURCH	Approval	FINAL	

Material M270-50W Except as Noted
 Electrodes _____
 Connectors _____ Open Holes 1 1/16 Except as Noted
 End and Edge Distance _____ Except as Noted
 Spacing Not Shown _____
 Paint NONE

REV	DESCRIPTION	DATE	BY

Fought & Company, Inc.
STEEL FABRICATION
 14255 S.W. 72nd AVE. 639-3141 TIGARD, OREGON

SOUND TRANSIT
 N125 TBM TUNNELS UWS TO MLP
 CITY OF SEATTLE, WA

DRAWN BY: EDS
 CHECKED BY: DLT

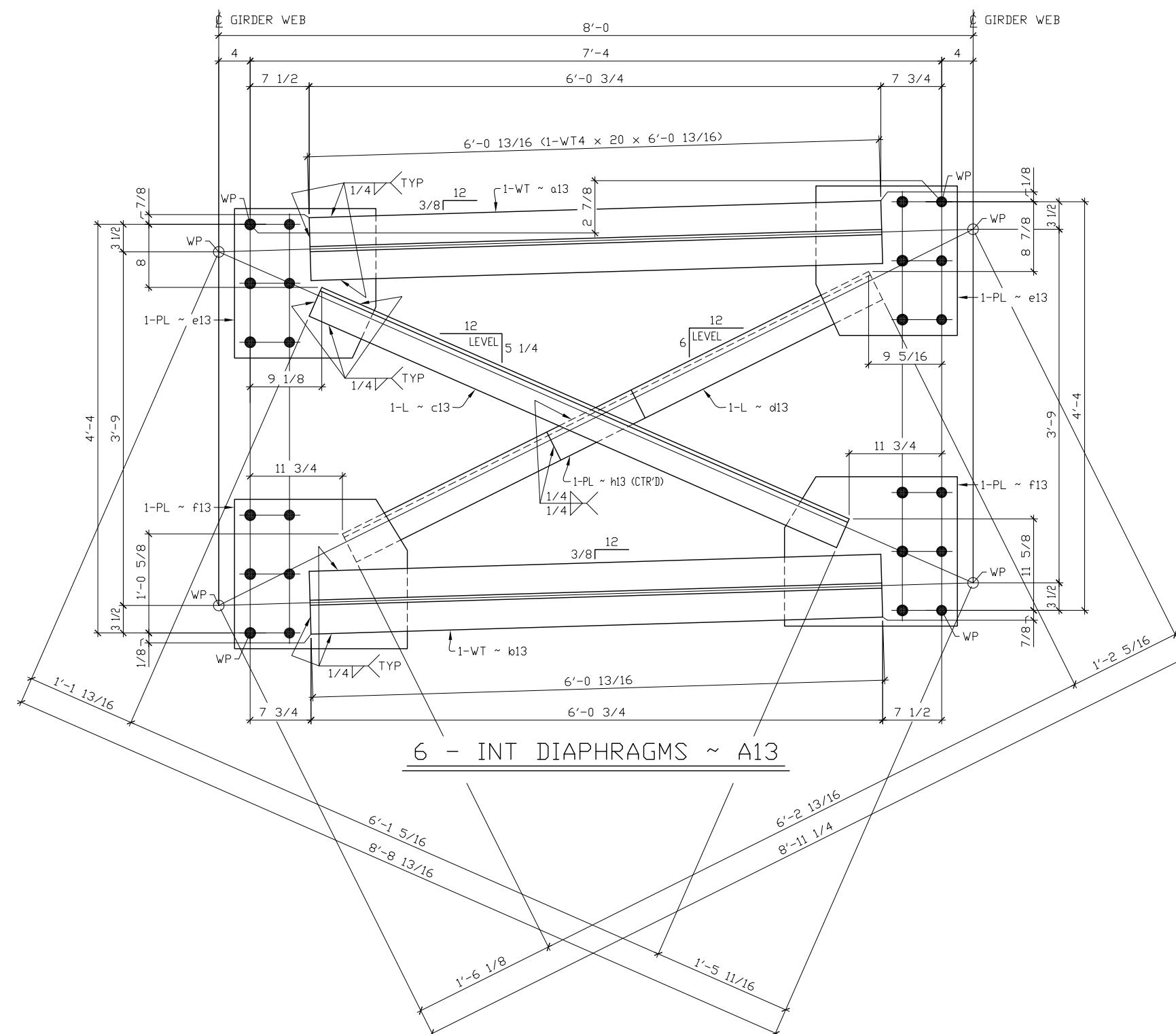
BRG DIAPHRAGMS

REFERENCES	DWG NO	REVISION
	12	

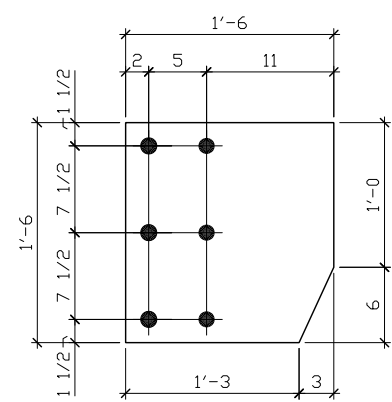
JOB NO: 4085

BILL OF MATERIAL

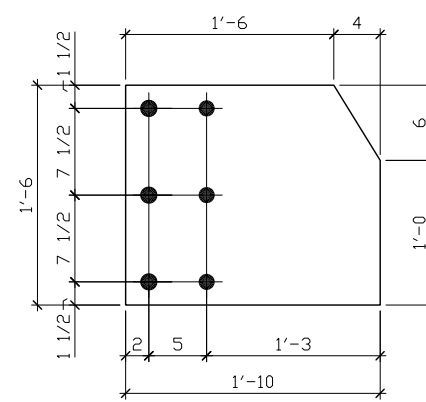
ITEM NO.	NO. TO SHIP	SHIP MARK	TOT. NO. PCS.	PC. MARK	SIZE	LENGTH	REMARKS	WEIGHT
	6	A13			INT DIAPHRAGMS			
3/3			6	a13	WT 4 x 20	6'-0 13/16		
3/3			6	b13	WT 4 x 20	6'-0 13/16		
3/5			6	c13	L 4 x 4 x 3/8	6'-1 5/16		
3/5			6	d13	L 4 x 4 x 3/8	6'-2 13/16		
3/7			12	e13	PL 1 x 18	1'-6		
3/9			12	f13	PL 1 x 18	1'-10		
3/11			6	h13	PL 1 x 4	1'-0		



6 - INT DIAPHRAGMS ~ A13



DETAIL ~ e13



DETAIL ~ f13

FOR APPROVAL
3/31/2014

NOTES:
1) FOR GENERAL NOTES SEE SHEET GN1.
2) FOR WELD TERMINATION DETAIL SEE SHEET GN1.

REV	DISTRIBUTION					DATE
	Q.C.	SHOP	PURCH	Approval	FINAL	

Material M270-50W Except as Noted
 Electrodes _____
 Connectors _____ Open Holes 1 1/16 Except as Noted
 End and Edge Distance _____ Except as Noted
 Spacing Not Shown _____
 Paint NONE

Fought & Company, Inc.
 STEEL FABRICATION
 14255 S.W. 72nd AVE. 639-3141 TIGARD, OREGON

SOUND TRANSIT
 N125 TBM TUNNELS UWS TO MLP
 CITY OF SEATTLE, WA

DRAWN BY EDS	CHECKED BY DLT	INT DIAPHRAGMS
REV	DESCRIPTION	DATE