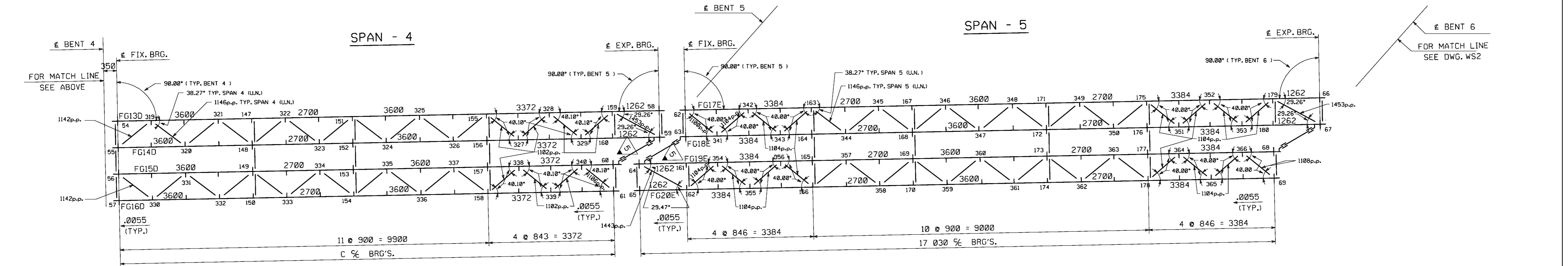
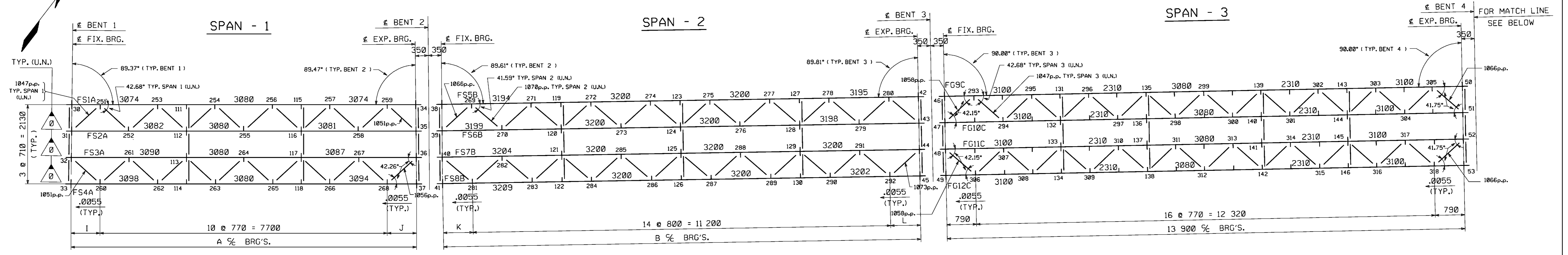


Scale = 0.002000 of full size.

METRIC

1. ALL DIMENSIONS ARE IN MILLIMETERS UNLESS OTHERWISE NOTED.
2. ALL WEIGHTS ARE IN KILOGRAMS.

FED. ROAD DIV. NO.	STATE	FED. AID PROJ. NO.
3	PA	



CALCULATION PLAN

NOTE
THE PURPOSE OF THIS DRAWING IS TO COORDINATE GEOMETRIC CONTROL INFORMATION. THIS DRAWING IS SUBMITTED FOR INFORMATION ONLY AND IS NOT INTENDED FOR SHOP FABRICATION. THIS DRAWING IS FOR REFERENCE ONLY, APPROVAL IS NOT REQUIRED.

NOTES:
DIMENSIONS ON PLAN ALONG GIRDERS/STRINGERS ARE GIVEN TO THE CHORD AT THE BOTTOM OF THE WEB, OR BOTTOM OF STRINGER IN FULLY CAMBERED POSITION. ALL OTHER DIMENSIONS GIVEN HORIZONTALLY.
DIMENSIONS PLACED ON THE GIRDER/STRINGER LINES REPRESENT DIAPHRAGM SPACING. FIGURES GIVEN THIS: 0.055 ARE THE GRADES OF THE GIRDER/STRINGER AT THE BEARINGS IN FINAL POSITION; ARROW POINTS DOWNGRADE.
ALL STIFFENER AND CONNECTION PLATE SPACINGS ARE GIVEN TO PLATE. ENDS OF GIRDERS/STRINGERS AND ALL BEARING STIFFENERS TO BE VERTICAL IN FINAL POSITION.
ALL STEEL TO BE ASTM A709 GR. 345 (U.N.)
ALL FIELD CONNECTIONS TO BE MADE WITH 7/8" H.S. (A325 TYPE 1) (MECH. GALV.) (RECT) BOLTS (U.N.). FIGURES GIVEN THIS: Δ ARE THE DIFFERENCES IN ELEVATIONS OF GIRDERS/STRINGERS (IN THE PLANE OF THE DIAPHRAGM IN ERRECTED POSITION) AT DIAPHRAGMS; ARROW POINTS TOWARD LOW GIRDER/STRINGER.
WORK THIS DWG. WITH DWG. WS2.

LINE	A	I	J
S1	9228	764	764
S2	9243	772	771
S3	9257	780	777
S4	9272	788	784

LINE	B	K	L
S5	12 789	794	795
S6	12 797	799	798
S7	12 804	804	800
S8	12 811	809	802

LINE	C
G13,G14	14 534
G15,G16	13 272

NO.	REVISION	BY	DATE
WORKSHEET - CALCULATION PLAN N.S. RAILWAY TEMP. TRESTLE BRIDGE OVER S.R. 0309 N.S. RAILWAY TEMP. TRESTLE BRIDGE STA. 8 + 671.276 MONTGOMERY COUNTY, PA COMMONWEALTH OF PENNSYLVANIA DEPARTMENT OF TRANSPORTATION			
STATE CONTRACT OR REF. NO. S-25417 ECMS NO. 64275			
CONTRACTOR NYLEVE BRIDGE CORPORATION			
IN CHARGE: COLONIAL(WRC) MADE BY: RAS CHK'D BY: JTC DATE: 11-10-04			
CONTRACT NUMBER: PA-04091-1 DRAWING NUMBER: WS1 OF WS2			