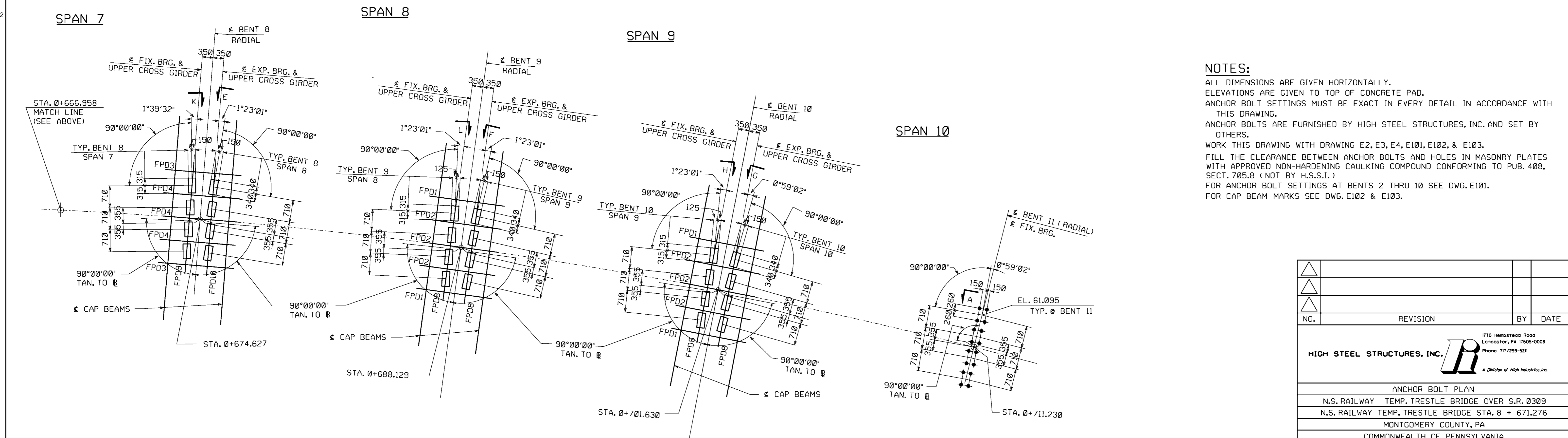
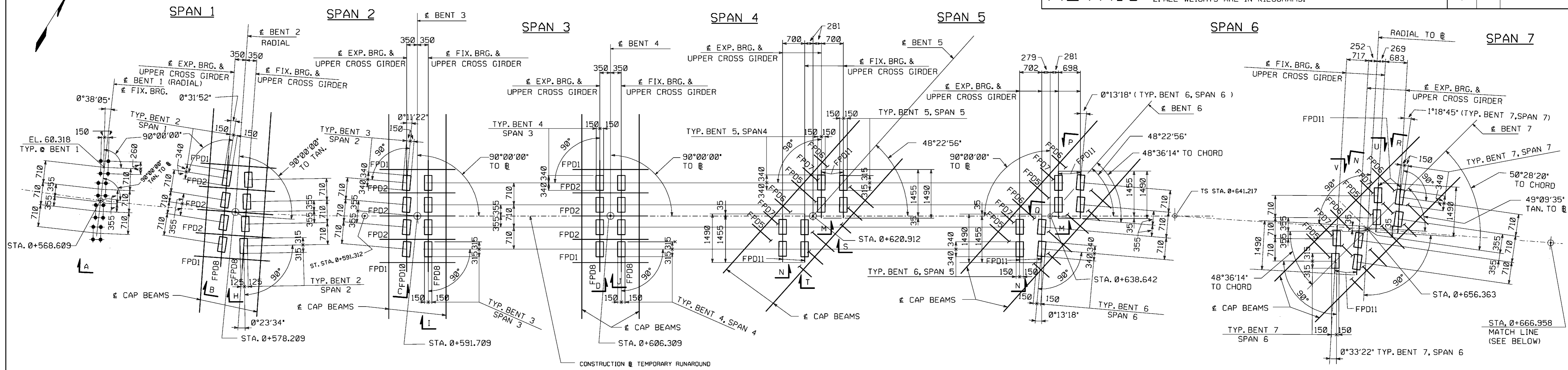


METRIC

METRIC

1. ALL DIMENSIONS ARE IN MILLIMETERS UNLESS OTHERWISE NOTED.
2. ALL WEIGHTS ARE IN KILOGRAMS.


FED. ROAD DIV. NO.	STATE	FED. AID PROJ. NO.
3	PA	



ANCHOR BOLT PLAN

NOTES:
 ALL DIMENSIONS ARE GIVEN HORIZONTALLY.
 ELEVATIONS ARE GIVEN TO TOP OF CONCRETE PAD.
 ANCHOR BOLT SETTINGS MUST BE EXACT IN EVERY DETAIL IN ACCORDANCE WITH THIS DRAWING.
 ANCHOR BOLTS ARE FURNISHED BY HIGH STEEL STRUCTURES, INC. AND SET BY OTHERS.
 WORK THIS DRAWING WITH DRAWING E2, E3, E4, E101, E102, & E103.
 FILL THE CLEARANCE BETWEEN ANCHOR BOLTS AND HOLES IN MASONRY PLATES WITH APPROVED NON-HARDENING CAULKING COMPOUND CONFORMING TO PUB. 408, SECT. 705.8 (NOT BY H.S.S.I.)
 FOR ANCHOR BOLT SETTINGS AT BENTS 2 THRU 10 SEE DWG. E101.
 FOR CAP BEAM MARKS SEE DWG. E102 & E103.

NO.	REVISION	BY	DATE

HIGH STEEL STRUCTURES, INC.  A Division of High Industries, Inc.
 1770 Hempstead Road
 Lancaster, PA 17605-0008
 Phone 717/299-5211

ANCHOR BOLT PLAN
 N.S. RAILWAY TEMP. TRETTLE BRIDGE OVER S.R. 0309
 N.S. RAILWAY TEMP. TRETTLE BRIDGE STA. 8 + 671.276
 MONTGOMERY COUNTY, PA
 COMMONWEALTH OF PENNSYLVANIA
 DEPARTMENT OF TRANSPORTATION

STATE CONTRACT OR REF. NO. S-25417 ECMS NO. 64275
 CONTRACTOR NYLEVE BRIDGE CORPORATION
 IN CHARGE: COLONIAL(WRC) MADE BY: RAS CHK'D: JTC DATE: 11-16-04
 CONTRACT NUMBER: PA-04091-1 DRAWING NUMBER: E1 OF E4

BY: c:n1
PLOTED: 03/23/05 03:51:04 PM